

TOPEKA RGNL (FOE)  
RNAV (GPS) RWY 21

TOPEKA, KANSAS

AL-424 (FAA)

25219

WAAS CH <b>42834</b> <b>W21A</b>	APP CRS <b>215°</b>	Rwy Ldg TDZE <b>7001</b> <b>1047</b> Apt Elev <b>1078</b>
--	------------------------	--

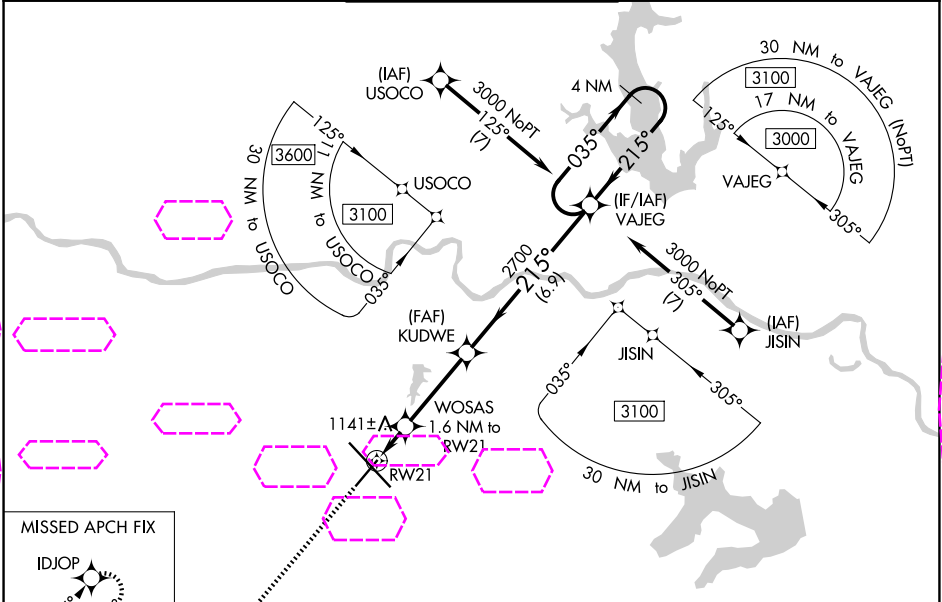
# RNAV (GPS) RWY 21

TOPEKA RGNL (F/OE)

**⚠** For uncompensated Baro-VNAV systems, LNAV/VNAV NA below -19°C (-2°F) or above 54°C (130°F).  
**⚠** When local altimeter setting not received, use Philip Billard Muni altimeter setting and increase all DA 45 feet and all MDA 60 feet, increase LPV and LNAV/VNAV all Cats visibility to 1 mile and increase LNAV Cat C/D visibility and Circling Cat D visibility ½ mile. DME/DME RNP-0.3 NA. VDP and Baro-VNAV NA when using Philip Billard Muni altimeter setting. Helicopter visibility reduction below ¾ SM NA.

MISSED APPROACH: Climb to 3000 direct IDJOP and hold.

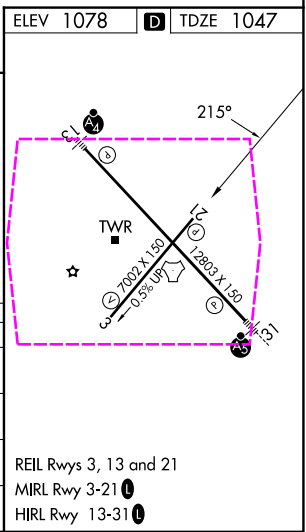
ATIS <b>128.25</b>	KANSAS CITY CENTER <b>123.8 343.7</b>	FORBES TOWER★ <b>120.8 (CTAF) 340.2</b>	GND CON <b>118.425 275.8</b>	UNICOM <b>122.95</b>
-----------------------	--	--	---------------------------------	-------------------------



NC-2, 07 AUG 2025 to 04 SEP 2025

NC-2, 07 AUG 2025 to 04 SEP 2025

MISSED APCH FIX	
IDJOP	
3000 IDJOP	
*LNAV only.	
WOSAS 1.6 NM to RW21	
KUDWE 2700	
VAJEG 4 NM Holding Pattern	
RW21 1600*	
GP 3.00° TCH 51	
CATEGORY	A B C D
LPV DA	1311-1 264 (300-1)
LNAV/VNAV DA	1297-¾ 250 (300-¾)
LNAV MDA	1440-1 393 (400-1) 1440-1½ 393 (400-1½)
CIRCLING	1520-1 442 (500-1) 1580-1 502 (600-1) 1580-1½ 502 (600-1½) 1700-2 622 (700-2)



TOPEKA, KANSAS  
Amdt 1B 18AUG16

38°57'N-95°40'W

TOPEKA RGNL (F/OE)  
RNAV (GPS) RWY 21