

WAAS CH 66100 W13A	APP CRS 132°	Rwy Idg 12803 TDZE 1066 App Elev 1078
--	------------------------	--

RNAV (GPS) RWY 13

TOPEKA RGNI (FOE)

RNP APCH.

⚠ When local altimeter setting not received, use Philip Billard Muni altimeter setting and increase all DA/MDA 60 feet, increase LPV all Cats visibility $\frac{1}{2}$ SM, LNAV Cat C visibility $\frac{1}{2}$ SM and Circling Cat D visibility $\frac{1}{4}$ SM. Baro-VNAV and VDP NA when using Philip Billard Muni altimeter setting. For uncompensated Baro-VNAV systems, LNAV/VNAV NA below -17°C or above 54°C.

MALSF



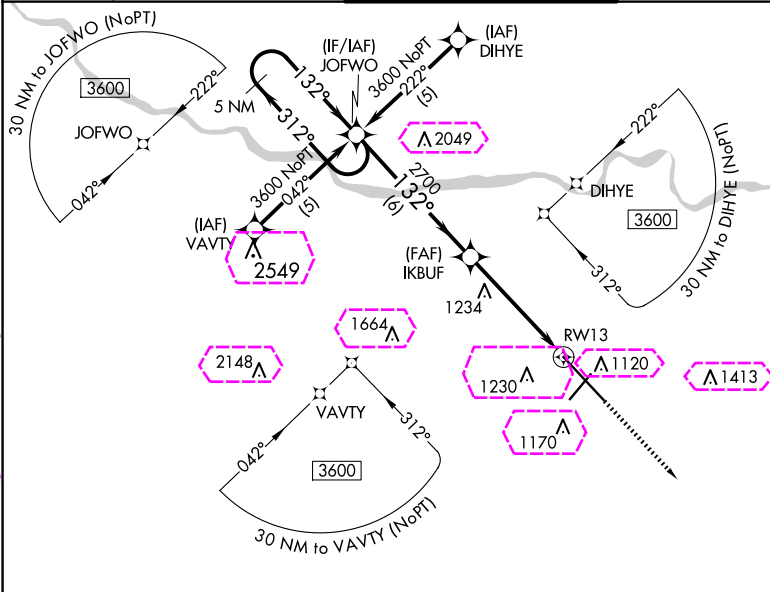
MISSED APPROACH:
Climb to 3000 direct
ERJAG and hold.

ATIS
128.25

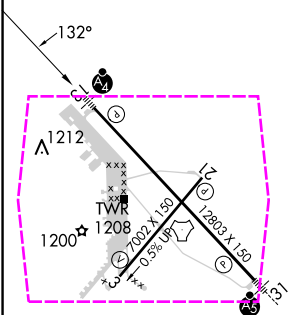
KANSAS CITY CENTER
123.8 343.7

FORBES TOWER★
20.8 (CTAF) **L** 340.2

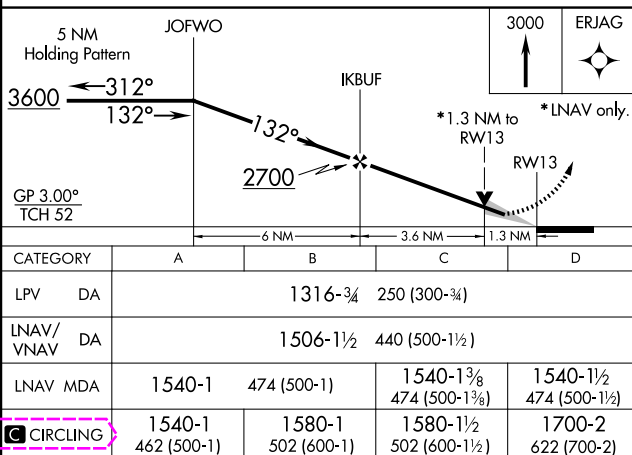
GND CON
118.425 275.8

UNICOM
122.95

ELEV 1078	D	TDZE 1066
-----------	----------	-----------



REIL Rwy 3, 13 and 21
MIRL Rwy 3-21 **L**
HIRL Rwy 13-31 **L**



TOPEKA, KANSAS
Orig-C 13SEP18

TOPEKA RGNL (FOE)

38°57'N-95°40'W

RNAV (GPS) RWY 13

NC-2, 10 JUL 2025 to 07 AUG 2025

NC-2, 10 JUL 2025 to 07 AUG 2025

TOPEKA, KANSAS

AL-424 (FAA)

25219

WAAS CH 66100 W13A	APP CRS 132°	Rwy Ldg 12803 TDZE 1066 App Elev 1078
--	------------------------	--

RNAV (GPS) RWY 13

TOPEKA RGNL (FOE)

RNP APCH

▼

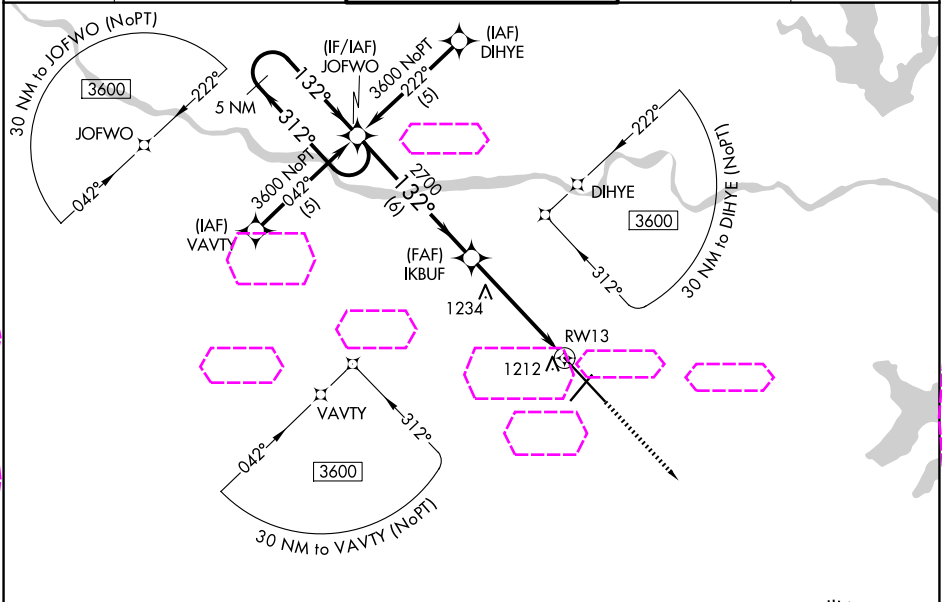
▲

When local altimeter setting not received, use Philip Billard Muni altimeter setting and increase all DA/MDA 60 feet, increase LPV all Cals visibility 1/8 SM, LNAV Cat C visibility 1/8 SM and Circling Cat D visibility 1/4 SM. Baro-VNAV and VDP NA when using Philip Billard Muni altimeter setting. For uncompensated Baro-VNAV systems, LNAV/VNAV NA below -17°C or above 54°C.

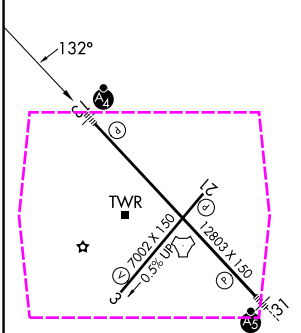
MALSF

MISSED APPROACH:
Climb to 3000 direct
ERJAG and hold.

ATIS 128.25	KANSAS CITY CENTER 123.8 343.7	FORBES TOWER★ 120.8 (CTAF) 340.2	GND CON 118.425 275.8	UNICOM 122.95
-----------------------	--	--	---------------------------------	-------------------------



ELEV 1078	D	TDZE 1066
-----------	---	-----------



REIL Rwy 3, 13 and 21
MIRL Rwy 3-21
HIRL Rwy 13-31

5 NM Holding Pattern				
JOFWO				
3600 ← 312° → 132° → 132° → IKBUF				
GP 3.00° TCH 52				
*1.3 NM to RWY 13 *LNAV only.				
6 NM 3.6 NM 1.3 NM				
CATEGORY	A	B	C	D
LPV DA	1316-3/4 250 (300-3/4)			
LNAV/VNAV DA	1506-1 1/2 440 (500-1 1/2)			
LNAV MDA	1540-1	474 (500-1)	1540-1 3/8 474 (500-1 3/8)	1540-1 1/2 474 (500-1 1/2)
CIRCLING	1540-1 462 (500-1)	1580-1 502 (600-1)	1580-1 1/2 502 (600-1 1/2)	1700-2 622 (700-2)

TOPEKA, KANSAS
Orig-C 13SEP18

38°57'N-95°40'W

RNAV (GPS) RWY 13

TOPEKA RGNL (FOE)

NC-2, 07 AUG 2025 to 04 SEP 2025

NC-2, 07 AUG 2025 to 04 SEP 2025