

TOPEKA, KANSAS

AL-424 (FAA)

23334

LOC/DME I-FOE	APP CRS	Rwy Idg	12803
110.1	312°	TDZE	1037
Chan 38		Apt Elev	1078

# ILS or LOC RWY 31

TOPEKA RGNL (F/OE)

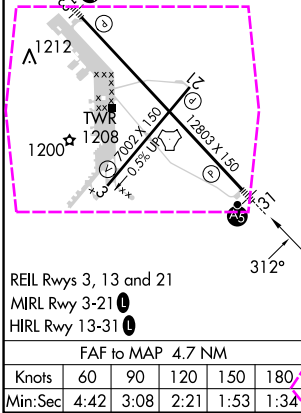
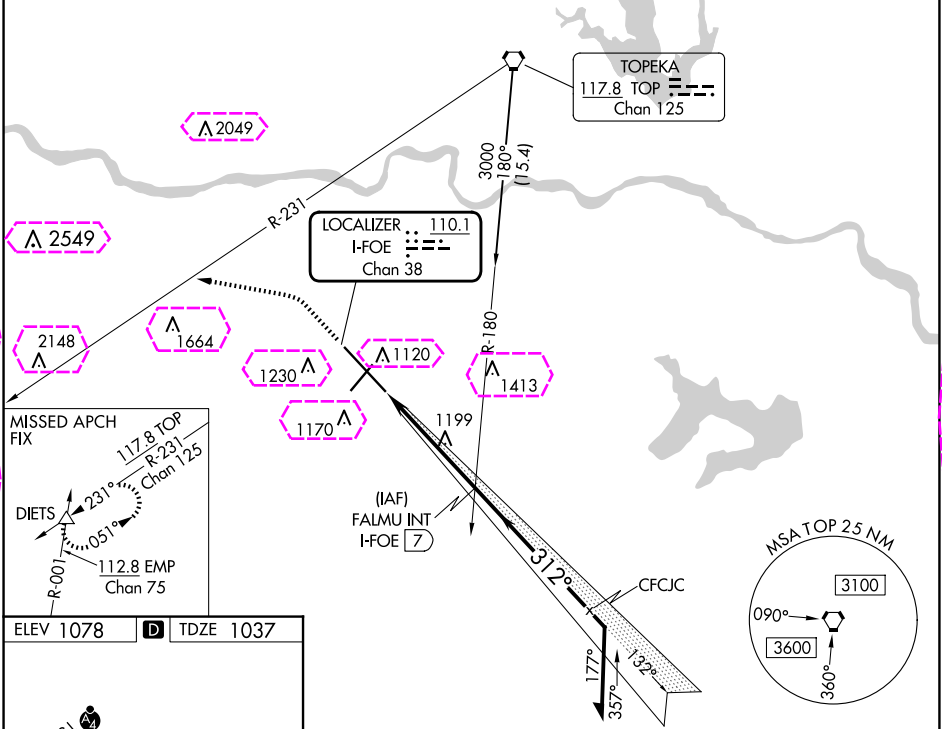
**⚠** RADAR required for Cat E for procedure entry.

**⚠** For inop ALS, increase S-ILS Cat E visibility to RVR 4000 and S-LOC Cat E visibility to 1¼ SM.  
\*RVR 1800 authorized with use of FD or AP or HUD to DA.

**MALSR**

**MISSED APPROACH:** Climb to 1900 then climbing left turn to 3700 on heading 275° and on TOP VORTAC R-231 to DIETS INT and hold.

ATIS	KANSAS CITY CENTER	FORBES TOWER*	GND CON	UNICOM
128.25	123.8 343.7	120.8 (CTAF) 0 340.2	118.425 275.8	122.95



1900	3700	TOP R-231	DIETS	FALMU INT I-FOE [7]	Remain within 10 NM
↑	hdg 275°	△			
Cat E procedure turn NA.					
I-FOE [2.3] I-FOE [3.4] 2600 3000 132° 312° 2600					
1.2 NM 3.6 NM GS 3.00° TCH 58					
CATEGORY	A	B	C	D	E
S-ILS 31*	1237/24 200 (200-½)				
S-LOC 31	1460/24 423 (400-½)		1460/40 423 (400-¾)		
Knots	60	90	120	150	180
Min:Sec	4:42	3:08	2:21	1:53	1:34
<b>CIRCLING</b>					
1520-1 442 (500-1)		1580-1 502 (600-1)		1580-1½ 502 (600-1½)	
1700-2 622 (700-2)		1720-2¼ 642 (700-2¼)			

TOPEKA, KANSAS

Amdt 10B 18MAY23

38°57'N-95°40'W

# ILS or LOC RWY 31

TOPEKA RGNL (F/OE)

NC-2, 10 JUL 2025 to 07 AUG 2025

NC-2, 10 JUL 2025 to 07 AUG 2025

TOPEKA, KANSAS

AL-424 (FAA)

25219

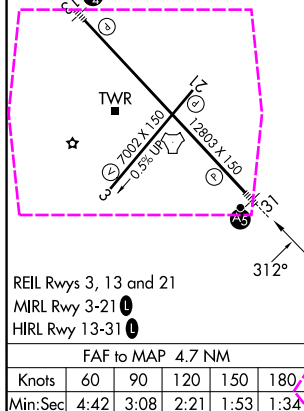
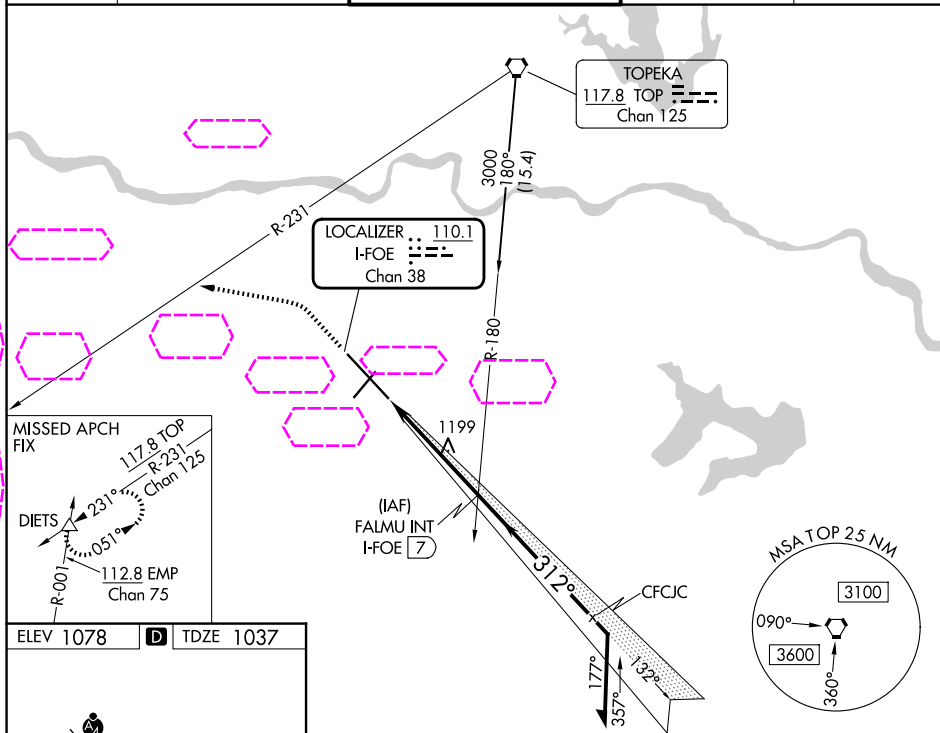
LOC/DME I-FOE <b>110.1</b> Chan <b>38</b>	APP CRS <b>312°</b>	Rwy Ldg TDZE <b>1037</b> Apt Elev <b>1078</b>
---	------------------------	---

# ILS or LOC RWY 31

TOPEKA RGNL (F.O.E.)

<b>▼</b> For inop ALS, increase S-ILS Cat E visibility to RVR 4000 and S-LOC Cat E visibility to 1¼ SM. <b>▲</b> *RVR 1800 authorized with use of FD or AP or HUD to DA.	<b>MALSR</b> 	<b>MISSED APPROACH:</b> Climb to 1900 then climbing left turn to 3700 on heading 275° and on TOP VORTAC R-231 to DIETS INT and hold.
---	------------------	--

ATIS <b>128.25</b>	KANSAS CITY CENTER <b>123.8 343.7</b>	FORBES TOWER* <b>120.8 (CTAF) 0 340.2</b>	GND CON <b>118.425 275.8</b>	UNICOM <b>122.95</b>
-----------------------	--	--	---------------------------------	-------------------------



TOPEKA, KANSAS

Amdt 10B 18MAY23

38°57'N-95°40'W

TOPEKA RGNL (F.O.E.)

# ILS or LOC RWY 31

1900	3700	TOP R-231	DIETS	FALMU INT I-FOE [7]	Remain within 10 NM
↑	hdg 275°	△			
Cat E procedure turn NA.					
I-FOE [2.3]	I-FOE [3.4]	2600	132°	3000	GS 3.00° TCH 58
1.2 NM	3.6 NM				
CATEGORY	A	B	C	D	E
S-ILS 31*	1237/24 200 (200-½)				
S-LOC 31	1460/24	423 (400-½)	1460/40	423 (400-¾)	
	1520-1	1580-1	1580-1½	1700-2	1720-2¼
	442 (500-1)	502 (600-1)	502 (600-1½)	622 (700-2)	642 (700-2¼)

NC-2, 07 AUG 2025 to 04 SEP 2025