

TONOPAH, NEVADA

AL-423 (FAA)

24249

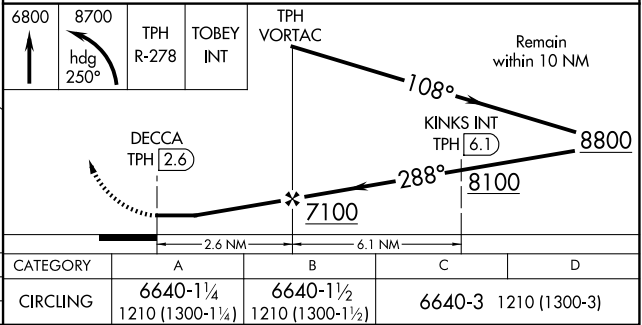
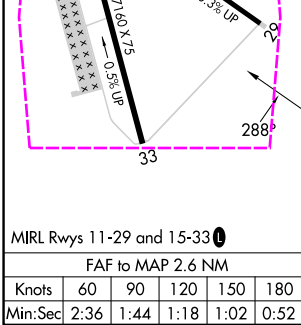
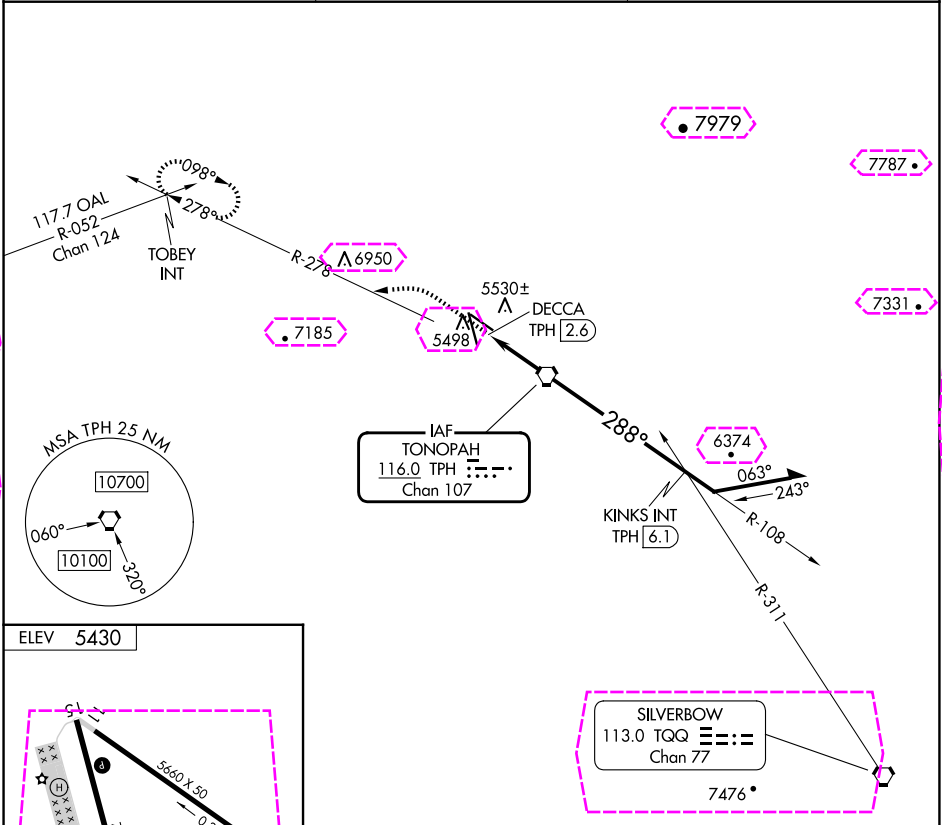
VORTAC TPH 116.0 Chan 107	APP CRS 288°	Rwy Idg TDZE Apt Elev N/A N/A 5430
---	------------------------	--

VOR-A
TONOPAH (TPH)

⚠ Circling Rwy 11 NA at night. When local altimeter setting not received, procedure NA. Circling NA for Cat D southwest of Rwy 15-33.

MISSED APPROACH: Climb to 6800 then climbing left turn to 8700 on heading 250° and on TPH VORTAC R-278 to TOBEY INT and hold.

ASOS 118.875	NELLIS APP CON 119.35 254.4	UNICOM 123.0 (CTAF) 1
------------------------	---------------------------------------	---------------------------------



TONOPAH, NEVADA

AL-423 (FAA)

25219

VORTAC TPH 116.0 Chan 107	APP CRS 288°	Rwy Ldg TDZE Apt Elev N/A N/A 5430
---	------------------------	--

VOR-A
TONOPAH (TPH)

⚠ Circling Rwy 11 NA at night. When local altimeter setting not received, procedure NA. Circling NA for Cat D southwest of Rwy 15-33.

MISSED APPROACH: Climb to 6800 then climbing left turn to 8700 on heading 250° and on TPH VORTAC R-278 to TOBEY INT and hold.

ASOS 118.875	NELLIS APP CON 119.35 254.4	UNICOM 123.0 (CTAF) 1
------------------------	---------------------------------------	---------------------------------

