

TONOPAH, NEVADA

AL-423 (FAA)

22307

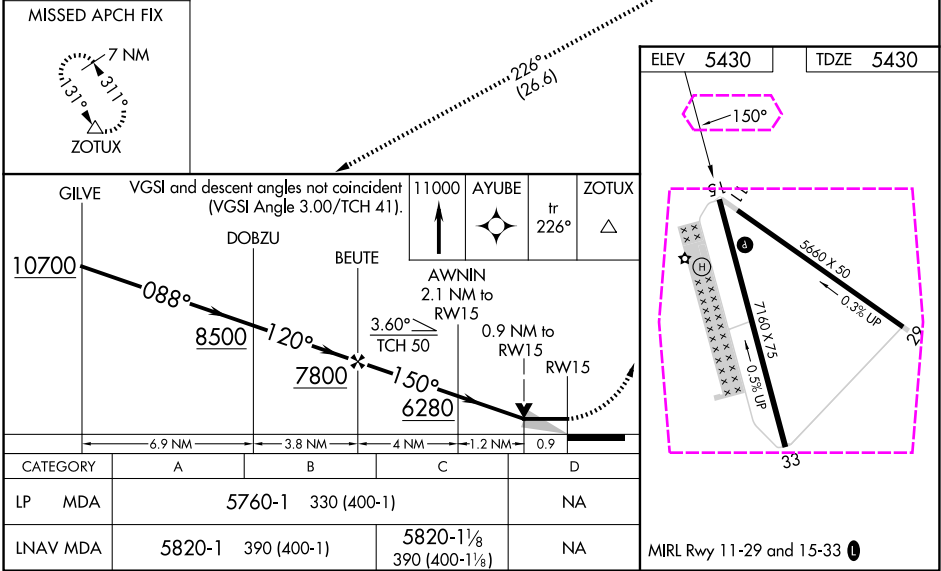
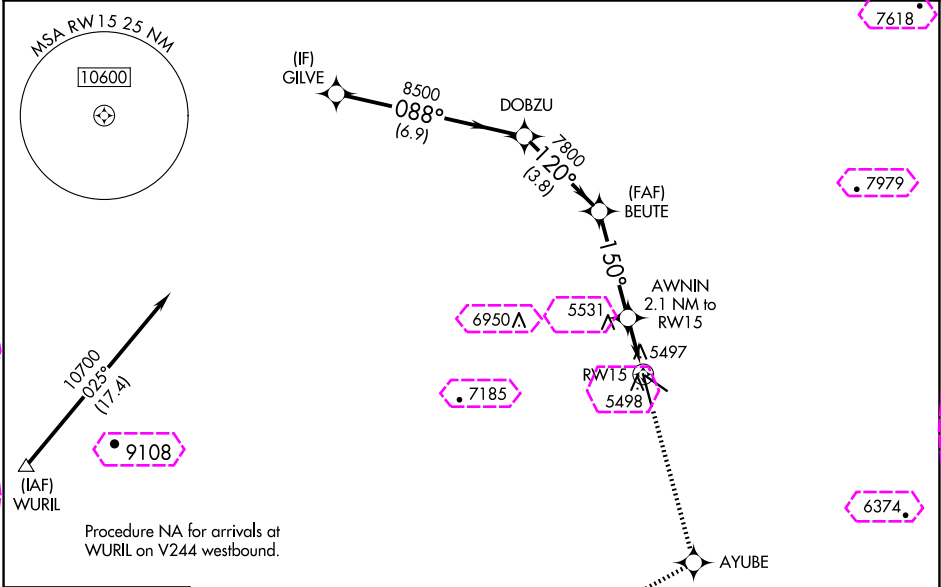
WAAS CH <b>42924</b> <b>W15A</b>	APP CRS <b>150°</b>	Rwy Idg TDZE Apt Elev	<b>7160</b> <b>5430</b> <b>5430</b>
--	------------------------	-----------------------------	---

# RNAV (GPS) RWY 15

TONOPAH (TPH)

RNP APCH - GPS.	MISSED APPROACH: Climb to 11000 direct AYUBE and on track 226° to ZOTUX and hold.
When local altimeter setting not received, procedure NA.	

ASOS <b>118.875</b>	NELUS APP CON <b>119.35 254.4</b>	UNICOM <b>123.0</b> (CTAF) <b>0</b>
------------------------	--------------------------------------	--



TONOPAH, NEVADA  
Orig-C 03NOV22

38°04'N-117°05'W

# RNAV (GPS) RWY 15

TONOPAH (TPH)

TONOPAH, NEVADA

AL-423 (FAA)

25219

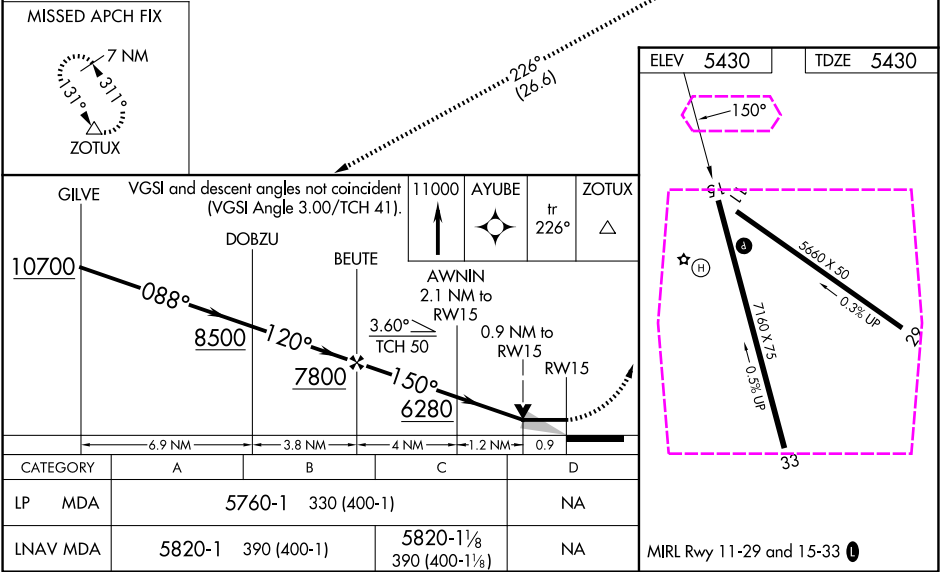
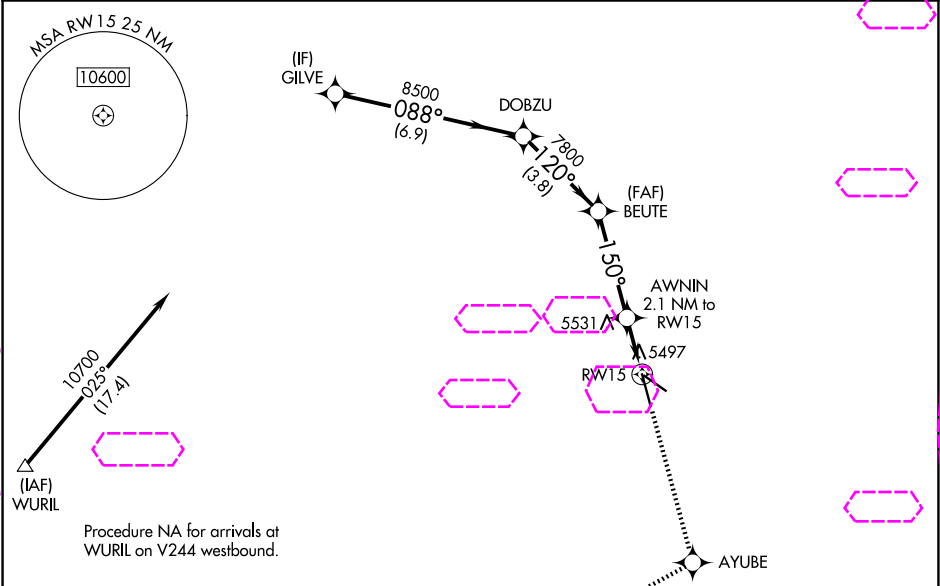
WAAS CH <b>42924</b> <b>W15A</b>	APP CRS <b>150°</b>	Rwy Ldg TDZE Apt Elev	<b>7160</b> <b>5430</b> <b>5430</b>
--	------------------------	-----------------------------	---

# RNAV (GPS) RWY 15

TONOPAH (TPH)

RNP APCH - GPS.	MISSED APPROACH: Climb to 11000 direct AYUBE and on track 226° to ZOTUX and hold.
When local altimeter setting not received, procedure NA.	

ASOS <b>118.875</b>	NELUS APP CON <b>119.35 254.4</b>	UNICOM <b>123.0 (CTAF) 0</b>
------------------------	--------------------------------------	---------------------------------



TONOPAH, NEVADA  
Orig-C 03NOV22

38°04'N-117°05'W

# RNAV (GPS) RWY 15

TONOPAH (TPH)

SW-4, 07 AUG 2025 to 04 SEP 2025

SW-4, 07 AUG 2025 to 04 SEP 2025