

TAMPA, FLORIDA

AL-417 (FAA)

24305

| | | |
|--|------------------------|---|
| WAAS CH 63220 W36A | APP CRS 344° | Rwy Idg 2311 TDZE 7 Apt Elev 7 |
|--|------------------------|---|

RNAV (GPS) RWY 36

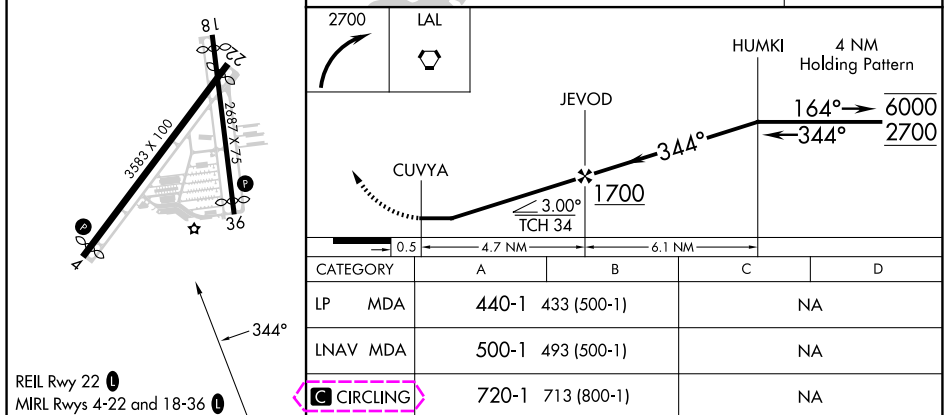
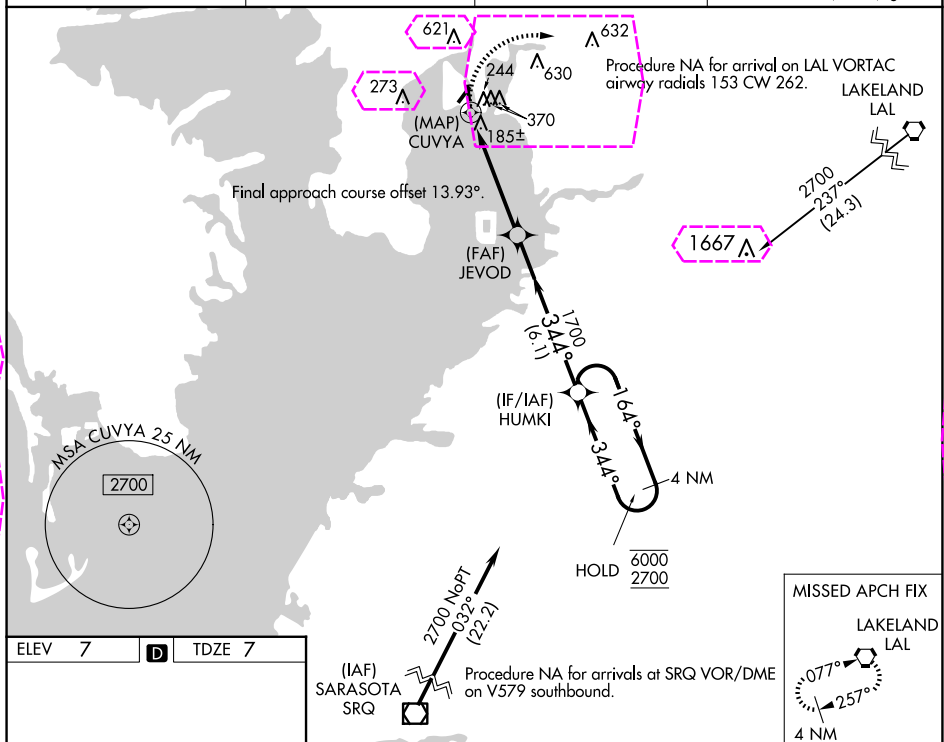
PETER O KNIGHT (TPF)

RNP APCH.

- T** Circling NA northwest of Rwy 4-22. Procedure NA at night. Rwy 36 helicopter visibility
A reduction below 1 SM NA. When local altimeter setting not received, use Tampa Intl
altimeter setting and increase all MDA 20 feet. Circling NA to Rwy 18.

MISSED APPROACH: Climbing right turn to 2700 direct LAL VORTAC and hold.

| | | | |
|--------------------------|-------------------------------------|--------------------------|-----------------------------------|
| AWOS-3 118.925 | TAMPA APP CON 119.9 290.3 | CLNC DEL 119.8 | UNICOM 122.725 (CTAF) L |
|--------------------------|-------------------------------------|--------------------------|-----------------------------------|



TAMPA, FLORIDA

Amdt 2E 26MAR20

27°55'N-82°27'W

PETER O KNIGHT (TPF)

RNAV (GPS) RWY 36

TAMPA, FLORIDA

AL-417 (FAA)

25219

| | | |
|--|------------------------|---|
| WAAS CH 63220 W36A | APP CRS 344° | Rwy Ldg 2311 TDZE 7 Apt Elev 7 |
|--|------------------------|---|

RNAV (GPS) RWY 36

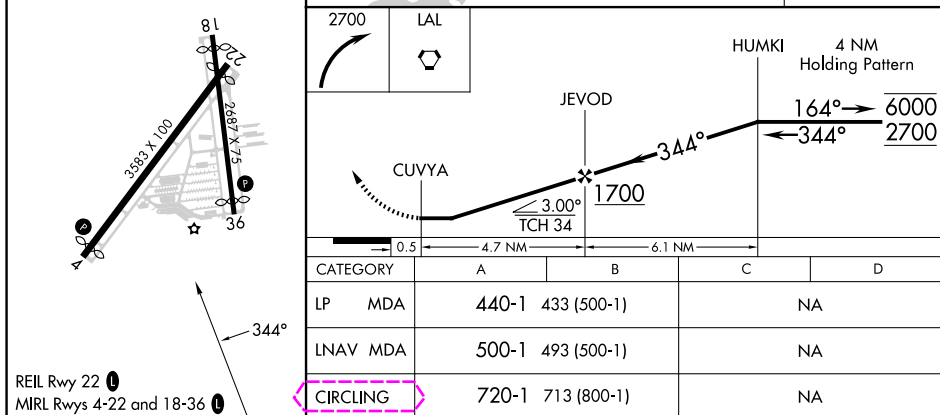
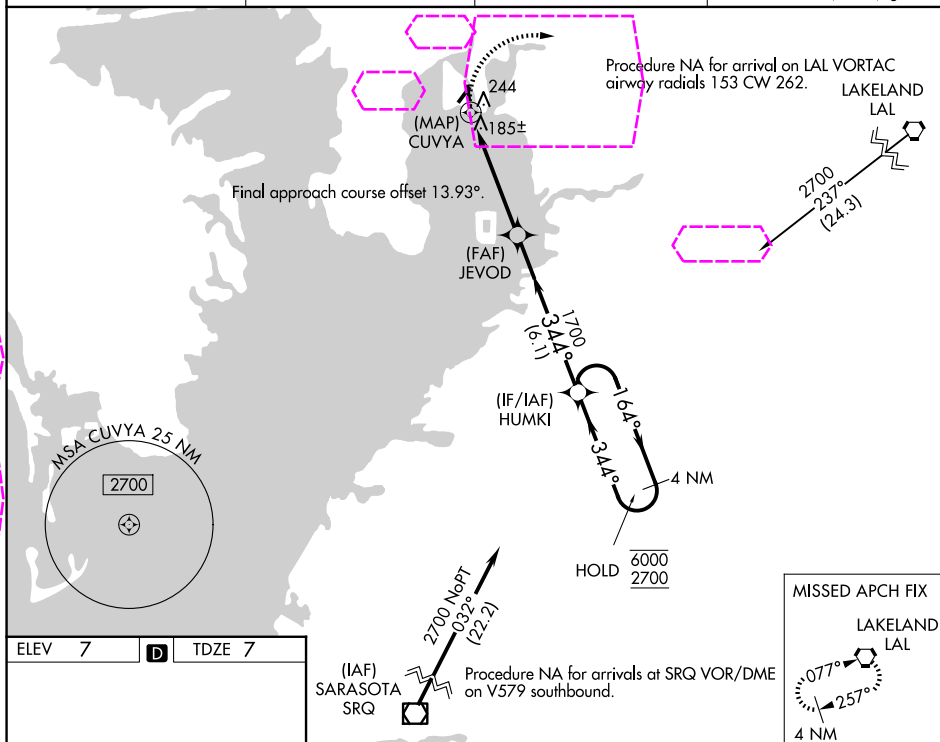
PETER O KNIGHT (TPF)

RNP APCH.

- T** Circling NA northwest of Rwy 4-22. Procedure NA at night. Rwy 36 helicopter visibility
A reduction below 1 SM NA. When local altimeter setting not received, use Tampa Intl
altimeter setting and increase all MDA 20 feet. Circling NA to Rwy 18.

MISSED APPROACH: Climbing right turn to 2700 direct LAL VORTAC and hold.

| | | | |
|--------------------------|-------------------------------------|--------------------------|-----------------------------------|
| AWOS-3 118.925 | TAMPA APP CON 119.9 290.3 | CLNC DEL 119.8 | UNICOM 122.725 (CTAF) L |
|--------------------------|-------------------------------------|--------------------------|-----------------------------------|



TAMPA, FLORIDA

Amdt 2E 26MAR20

27°55'N-82°27'W

PETER O KNIGHT (TPF)

RNAV (GPS) RWY 36

SE-3, 07 AUG 2025 to 04 SEP 2025

SE-3, 07 AUG 2025 to 04 SEP 2025