

TAMPA, FLORIDA

AL-417 (FAA)

23166

APP CRS	Rwy Idg	3403
222°	TDZE	7
	Apt Elev	7

RNAV (GPS) RWY 22

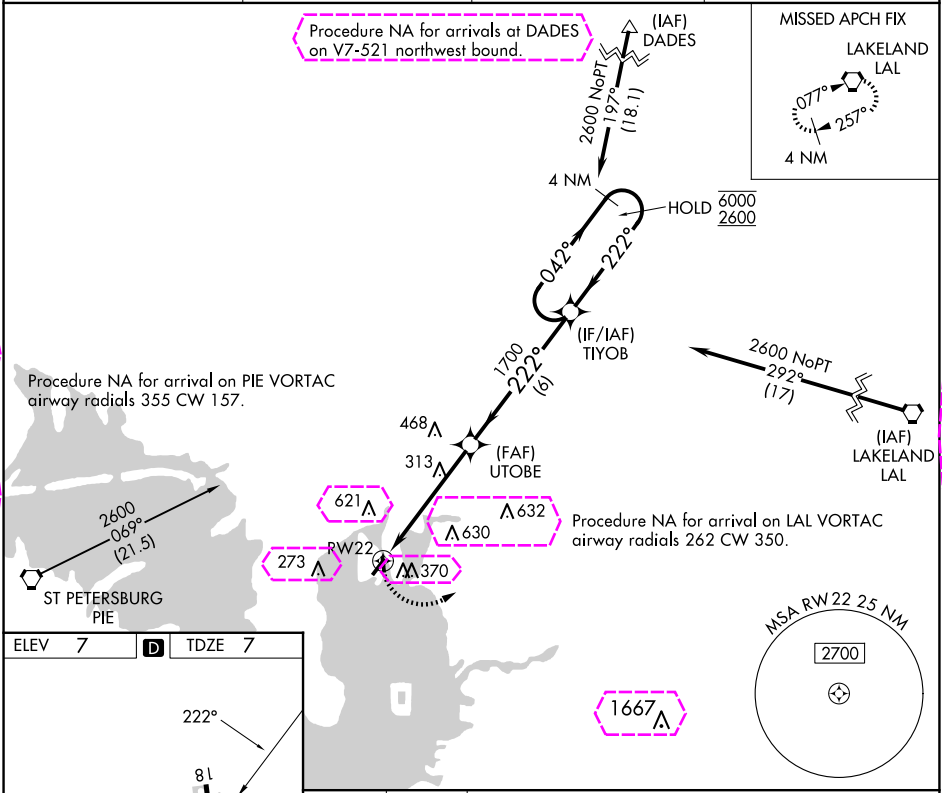
PETER O KNIGHT (TPF)

RNP APCH.

⚠ Circling NA northwest of Rwy 4-22. Procedure NA at night. Rwy 22 helicopter visibility reduction below 1 SM NA. When local altimeter setting not received, use Tampa Init altimeter setting and increase all MDA 20 feet. Circling NA to Rwy 18.

MISSED APPROACH: Climbing left turn to 2700 direct LAL VORTAC and hold.

AWOS-3 118.925	TAMPA APP CON 119.9 290.3	CLNC DEL 119.8	UNICOM 122.725 (CTAF) 0
-------------------	------------------------------	-------------------	----------------------------



REIL Rwy 22 0 MIRL Rwy 4-22 and 18-36 0				
<div><div></div><div>CIRCLING</div></div>				
CATEGORY	A	B	C	D
LNAV MDA	580-1	573 (600-1)	NA	
	720-1	713 (800-1)	NA	

TAMPA, FLORIDA
Amdt 2C 26MAR20

27°55'N-82°27'W

PETER O KNIGHT (TPF)
RNAV (GPS) RWY 22

SE-3, 10 JUL 2025 to 07 AUG 2025

SE-3, 10 JUL 2025 to 07 AUG 2025

TAMPA, FLORIDA

AL-417 (FAA)

25219

APP CRS	Rwy Ldg	3403
222°	TDZE	7
	Apt Elev	7

RNAV (GPS) RWY 22

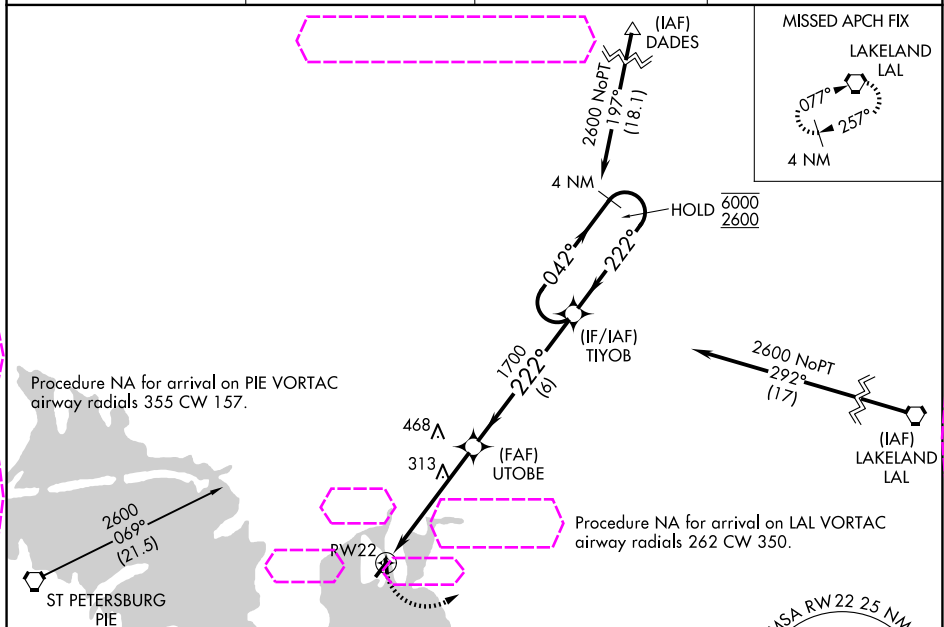
PETER O KNIGHT (TPF)

RNP APCH - GPS.

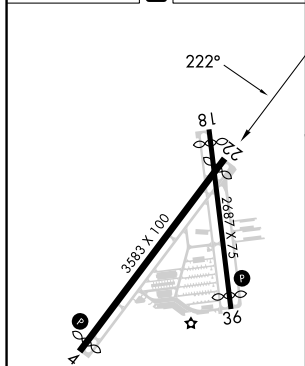
Procedure NA at night. Rwy 22 helicopter visibility reduction below 1 SM NA. Circling NA northwest of Rwy 4-22. Circling NA to Rwy 18. When local altimeter setting not received, use TPA altimeter setting and increase all MDA 20 feet.

MISSED APPROACH: Climbing left turn to 2700 direct LAL VORTAC and hold.

AWOS-3 118.925	TAMPA APP CON 119.9 290.3	CLNC DEL 119.8	UNICOM 122.725 (CTAF)
-------------------	------------------------------	-------------------	--------------------------



ELEV 7	TDZE 7
--------	--------



CATEGORY	A	B	C	D
LNAV MDA	580-1	573 (600-1)	NA	
CIRCLING	720-1	713 (800-1)	NA	

TAMPA, FLORIDA

Amdt 2D 07AUG25

27°55'N-82°27'W

PETER O KNIGHT (TPF)

RNAV (GPS) RWY 22

SE-3, 07 AUG 2025 to 04 SEP 2025

SE-3, 07 AUG 2025 to 04 SEP 2025