

TAMPA, FLORIDA

AL-416 (FAA)

25135

WAAS CH <b>87105</b> <b>W01B</b>	APP CRS <b>007°</b>	Rwy Idg <b>3300</b> TDZE <b>21</b> Apt Elev <b>26</b>
--	------------------------	---

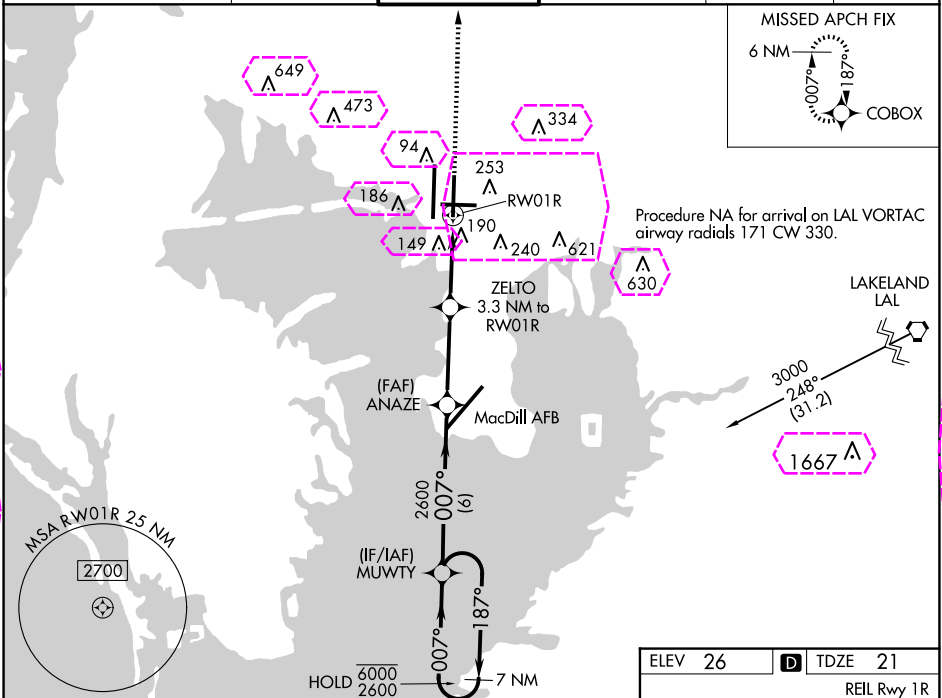
# RNAV (GPS) Y RWY 1R

TAMPA INTL (TPA)

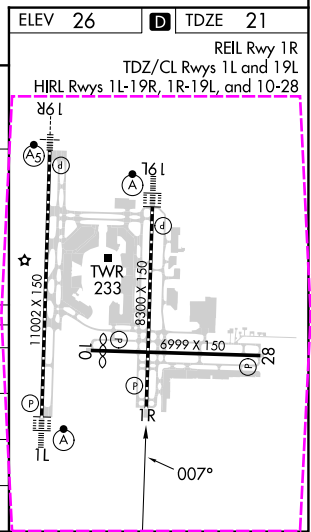
RNP APCH - GPS.

- ▼ For uncompensated Baro-VNAV systems, LNAV/VNAV NA below 4°C or above 54°C.
- ▲ Simultaneous approach authorized with Rwy 1L LNAV procedure NA during simultaneous operations. Use of FD or AP required during simultaneous operations.
- MISSED APPROACH: Climb to 2000 direct COBOX and hold.

ARR <b>126.45</b>	D-ATIS <b>128.475</b>	DEP <b>118.5 307.175</b>	TAMPA APP CON <b>118.5 307.175</b>	TAMPA TOWER <b>119.5 269.4</b>	GND CON <b>121.7 269.4</b>	CLNC DEL <b>133.6</b>	CPDLC
----------------------	--------------------------	-----------------------------	---------------------------------------	-----------------------------------	-------------------------------	--------------------------	-------



7 NM Holding Pattern		VGSI and RNAV glidepath not coincident (VGSI Angle 3.00/TCH 71).		2000	COBOX
MUWY		ANAZE	ZELTO	RW01R	
6000 ← 187°		2600	3.3 NM to	1.1 NM to	
2600 → 007°		2600	RW01R	RW01R	
GP 3.50°		2600	1300		
TCH 55		6 NM	3.5 NM	2.2 NM	1.1 NM
CATEGORY	A	B	C	D	E
LPV DA	291/45	270 (300-¾)		NA	
LNAV/VNAV DA	440/60	419 (500-1¼)		NA	
LNAV MDA	440/55	419 (500-1)	440/60	419 (500-1¼)	
CIRCLING	600-1	574 (600-1)	680-1¾ 654 (700-1¾)	980-3	954 (1000-3)



TAMPA, FLORIDA  
Amdt 3C 15MAY25

27°59'N-82°32'W

TAMPA INTL (TPA)  
RNAV (GPS) Y RWY 1R

SE-3, 10 JUL 2025 to 07 AUG 2025

SE-3, 10 JUL 2025 to 07 AUG 2025

TAMPA, FLORIDA

AL-416 (FAA)

25219

WAAS CH <b>87105</b> <b>W01B</b>	APP CRS <b>007°</b>	Rwy Ldg <b>3300</b> TDZE <b>21</b> Apt Elev <b>26</b>
--	------------------------	---

# RNAV (GPS) Y RWY 1R

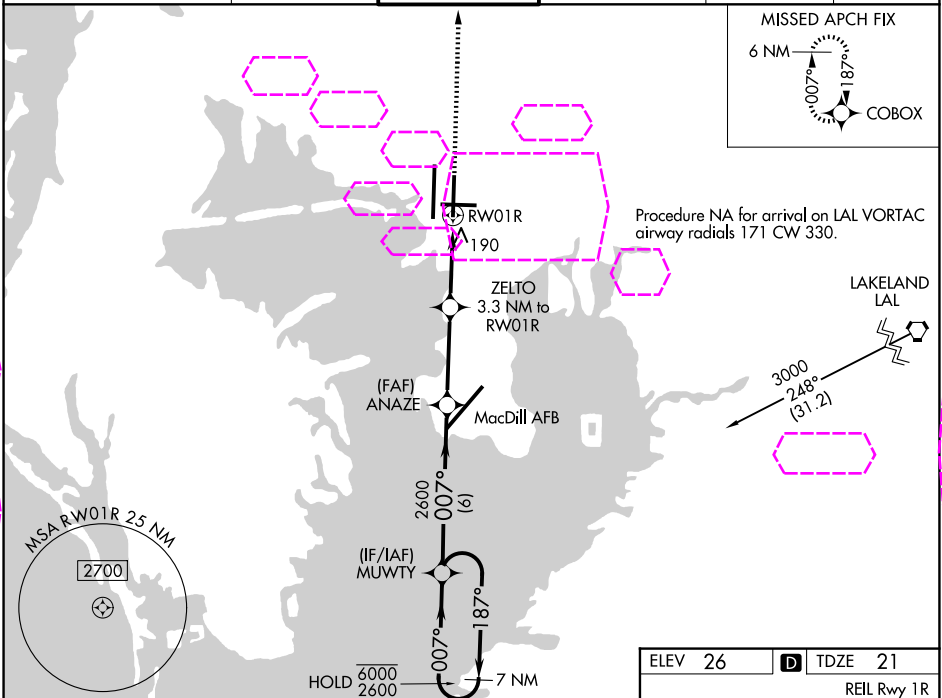
TAMPA INTL (TPA)

RNP APCH - GPS.

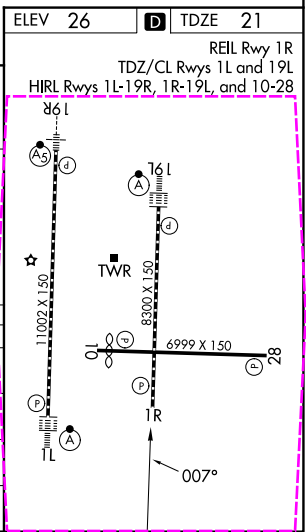
For uncompensated Baro-VNAV systems, LNAV/VNAV NA below 4°C or above 54°C.  
Simultaneous approach authorized with Rwy 1L LNAV procedure NA during simultaneous operations. Use of FD or AP required during simultaneous operations.

MISSED APPROACH: Climb to 2000 direct COBOX and hold.

ARR <b>126.45</b>	D-ATIS <b>128.475</b>	DEP <b>128.475</b>	TAMPA APP CON <b>118.5 307.175</b>	TAMPA TOWER <b>119.5 269.4</b>	GND CON <b>121.7 269.4</b>	CLNC DEL <b>133.6</b>	CPDLC
----------------------	--------------------------	-----------------------	---------------------------------------	-----------------------------------	-------------------------------	--------------------------	-------



7 NM Holding Pattern		VGSI and RNAV glidepath not coincident (VGSI Angle 3.00/TCH 71).		2000	COBOX
6000 ← 187°		007° →			
2600		007° →			
GP 3.50°		TCH 55			
← 6 NM		3.5 NM		2.2 NM	
		1.1 NM			
CATEGORY	A	B	C	D	E
LPV DA	291/45	270 (300-¾)		NA	
LNAV/VNAV DA	440/60	419 (500-1¼)		NA	
LNAV MDA	440/55	419 (500-1)	440/60	419 (500-1¼)	
CIRCLING	600-1	574 (600-1)	680-1¾ 654 (700-1¾)	980-3	954 (1000-3)



TAMPA, FLORIDA  
Amdt 3C 15MAY25

27°59'N-82°32'W

TAMPA INTL (TPA)  
RNAV (GPS) Y RWY 1R

SE-3, 07 AUG 2025 to 04 SEP 2025

SE-3, 07 AUG 2025 to 04 SEP 2025