

TAMPA, FLORIDA

AL-416 (FAA)


25107

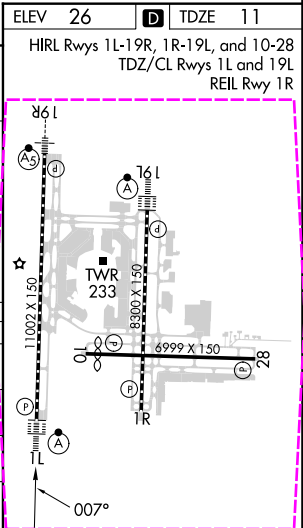
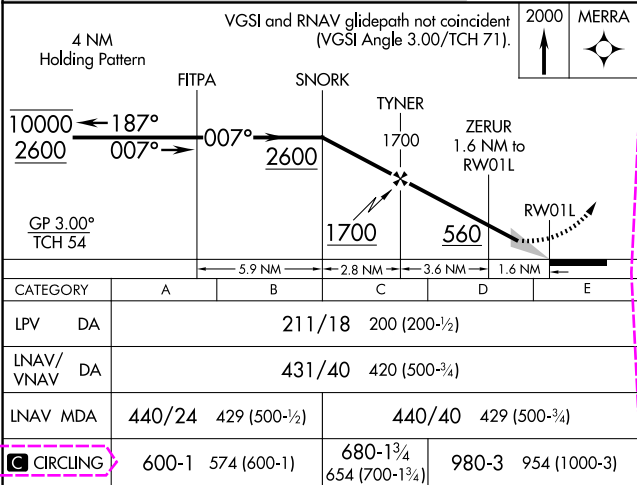
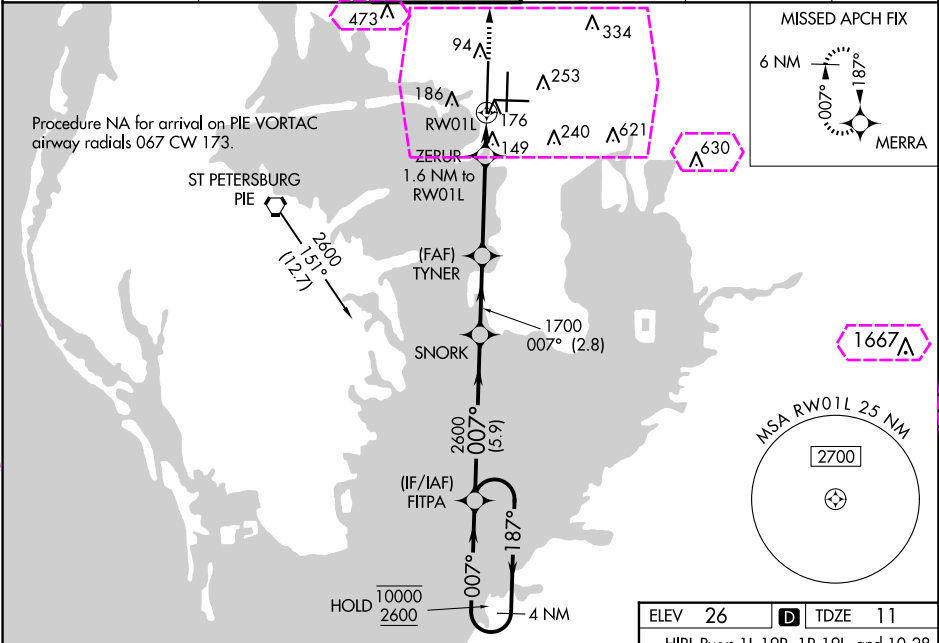
WAAS CH 50406 W01A	APP CRS 007°	Rwy Idg 10800 TDZE 11 Apt Elev 26
--	------------------------	--

RNAV (GPS) Y RWY 1L
TAMPA INTL (TPA)

RNP APCH - GPS.

⚠ For uncompensated Baro-VNAV systems, LNAV/VNAV NA below 4°C or above 54°C.
⚠ For inop ALSF, increase LPV Cat E visibility to RVR 4000, LNAV/VNAV all Cats visibility to RVR 6000, and LNAV Cat E visibility to 1¼ SM. Simultaneous approach authorized with Rwy 1R. LNAV procedure NA during simultaneous operations. Use of FD or AP required during simultaneous operations.

ALSF-2 	MISSED APPROACH: Climb to 2000 direct MERRA and hold.
CLNC DEL 133.6	CPDLC



TAMPA, FLORIDA
Amdt 3 17APR25

27°59'N-82°32'W

TAMPA INTL (TPA)
RNAV (GPS) Y RWY 1L

SE-3, 10 JUL 2025 to 07 AUG 2025

SE-3, 10 JUL 2025 to 07 AUG 2025

TAMPA, FLORIDA

AL-416 (FAA)

25219

WAAS CH 50406 W01A	APP CRS 007°	Rwy Ldg 10800 TDZE 11 Apt Elev 26
--	------------------------	---

RNAV (GPS) Y RWY 1L

TAMPA INTL (TPA)

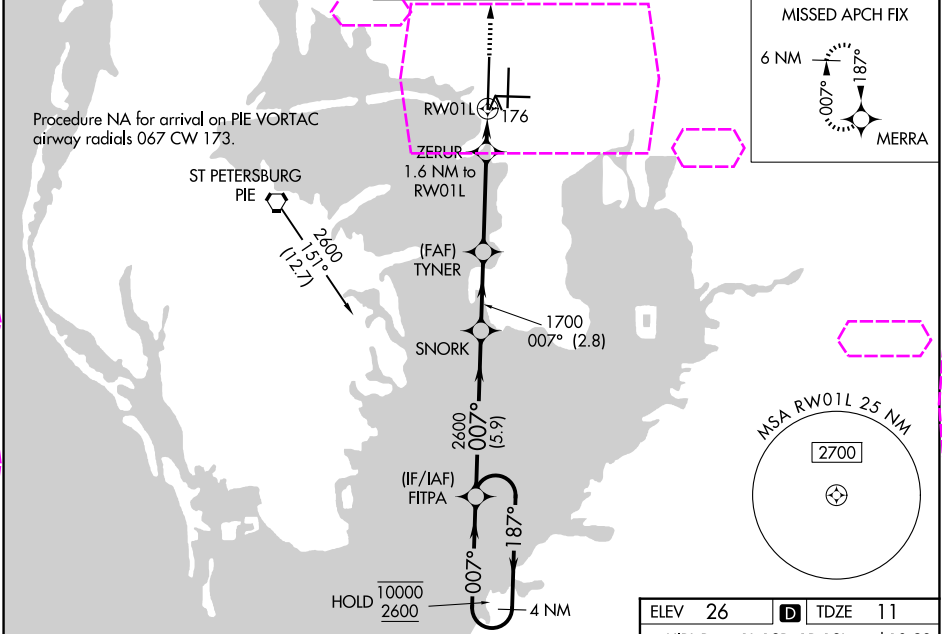
RNP APCH - GPS.

⚠ For uncompensated Baro-VNAV systems, LNAV/VNAV NA below 4°C or above 54°C.
⚠ For inop ALSF, increase LPV Cat E visibility to RVR 4000, LNAV/VNAV all Cats visibility to RVR 6000, and LNAV Cat E visibility to 1¼ SM. Simultaneous approach authorized with Rwy 1R. LNAV procedure NA during simultaneous operations. Use of FD or AP required during simultaneous operations.

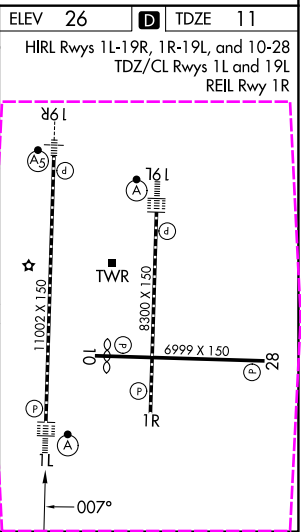
ALSF-2
ⓐ

MISSED APPROACH:
Climb to 2000 direct
MERRA and hold.

ARR 126.45	D-ATIS 128.475	DEP 118.5 307.175	TAMPA APP CON 119.5 269.4	TAMPA TOWER 121.7 269.4	GND CON 121.7 269.4	CLNC DEL 133.6	CPDLC
----------------------	--------------------------	-----------------------------	-------------------------------------	-----------------------------------	-------------------------------	--------------------------	-------



4 NM Holding Pattern		VGSI and RNAV glidepath not coincident (VGSI Angle 3.00/TCH 71).		2000	MERRA
10000 ← 187°		007° → 2600		2600	
GP 3.00°		TCH 54		RW01L	
FITPA		SNORK		TYNER	
1700		1700		ZERUR 1.6 NM to RW01L	
560		560		RW01L	
5.9 NM		2.8 NM		3.6 NM	
1.6 NM		1.6 NM		1.6 NM	
CATEGORY	A	B	C	D	E
LPV DA	211/18		200 (200-½)		
LNAV/VNAV DA	431/40		420 (500-¾)		
LNAV MDA	440/24	429 (500-½)	440/40	429 (500-¾)	
CIRCLING	600-1	574 (600-1)	680-1¾ 654 (700-1¾)	980-3	954 (1000-3)



TAMPA, FLORIDA
Amdt 3 17APR25

27°59'N-82°32'W

TAMPA INTL (TPA)
RNAV (GPS) Y RWY 1L

SE-3, 07 AUG 2025 to 04 SEP 2025

SE-3, 07 AUG 2025 to 04 SEP 2025