

TAMPA, FLORIDA

AL-416 (FAA)

25107

WAAS CH 70520 W28A	APP CRS 277°	Rwy Idg TDZE 26 Apt Elev 26
--	------------------------	---

RNAV (GPS) RWY 28

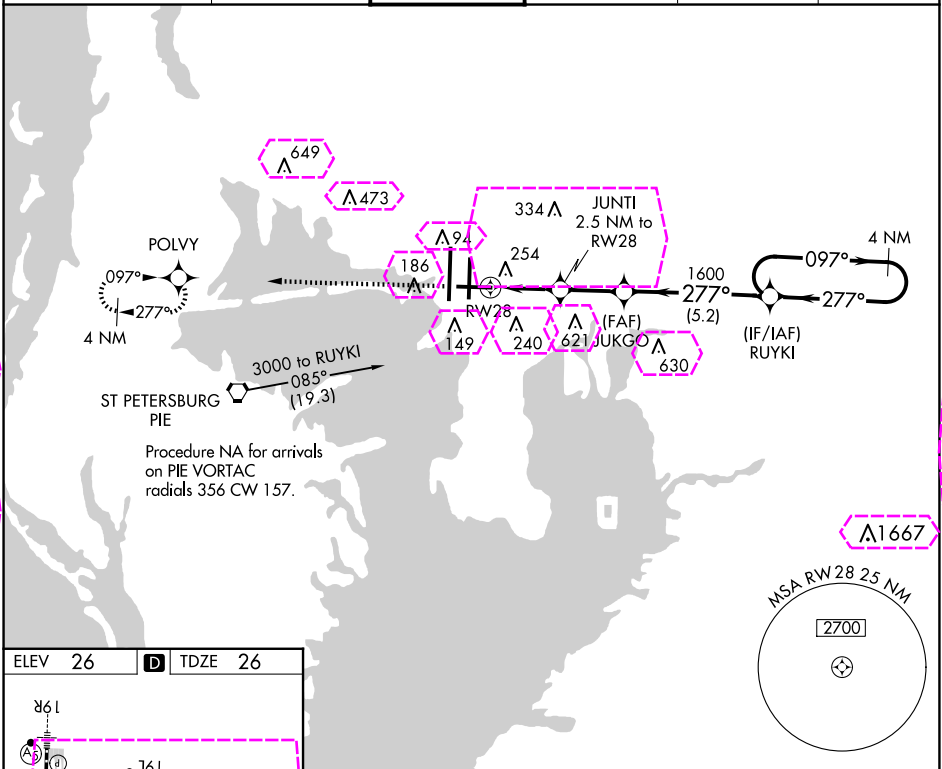
TAMPA INTL (TPA)

⚠

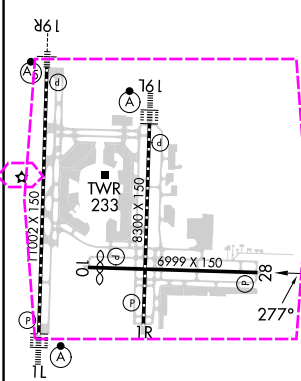
For uncompensated Baro-VNAV systems, LNAV/VNAV NA below -15°C (5°F) or above 43°C (109°F).
DME/DME RNP-0.3 NA. Helicopter visibility reduction below ¾ SM NA.

MISSED APPROACH: Climb to 2000 direct POLY and hold.

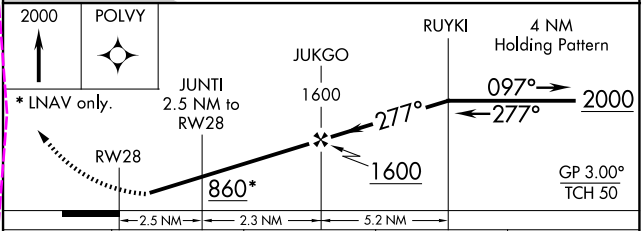
ARR 126.45	D-ATIS 128.475	TAMPA APP CON 118.5 307.175	TAMPA TOWER 119.5 269.4	GND CON 121.7 269.4	CLNC DEL 133.6	CPDLC
----------------------	--------------------------	---------------------------------------	-----------------------------------	-------------------------------	--------------------------	-------



ELEV 26	D	TDZE 26
---------	---	---------



REIL Rwy 1R
TDZ/CL Rwy 1L and 19L
HRL Rwy 1L-19R, 1R-19L, and 10-28



CATEGORY	A	B	C	D
LPV DA		389-1½	363 (400-1½)	
LNAV/VNAV DA		468-1½	442 (500-1½)	
LNAV MDA	520-1	494 (500-1)	520-1¾	494 (500-1¾)
CIRCLING	600-1	574 (600-1)	680-1¾ 654 (700-1¾)	980-3 954 (1000-3)

TAMPA, FLORIDA
Amdt 1D 17APR25

27°59'N-82°32'W

TAMPA INTL (TPA)

RNAV (GPS) RWY 28

TAMPA, FLORIDA

AL-416 (FAA)

25219

WAAS CH 70520 W28A	APP CRS 277°	Rwy Ldg TDZE 26 Apt Elev 26
--	------------------------	---

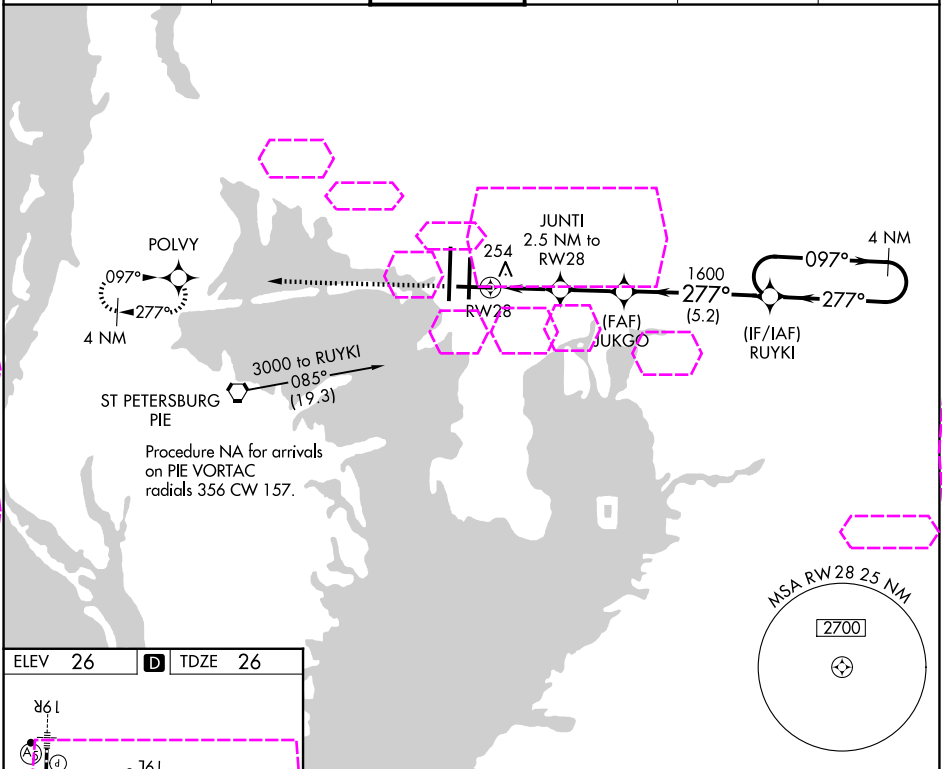
RNAV (GPS) RWY 28

TAMPA INTL (TPA)

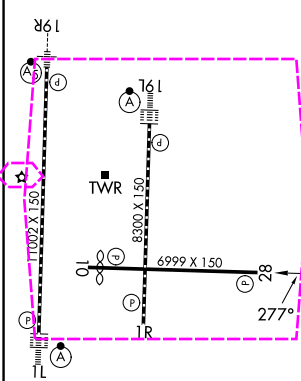
A For uncompensated Baro-VNAV systems, LNAV/VNAV NA below -15°C (5°F) or above 43°C (109°F).
DME/DME RNP-0.3 NA. Helicopter visibility reduction below ¾ SM NA.

MISSED APPROACH: Climb to 2000
direct POLY and hold.

ARR 126.45	D-ATIS 128.475	DEP 128.475	TAMPA APP CON 118.5 307.175	TAMPA TOWER 119.5 269.4	GND CON 121.7 269.4	CLNC DEL 133.6	CPDLC
----------------------	--------------------------	-----------------------	---------------------------------------	-----------------------------------	-------------------------------	--------------------------	-------



ELEV 26	D	TDZE 26
---------	----------	---------



REIL Rwy 1R
TDZ/CL Rwy 1L and 19L
HRL Rwy 1L-19R, 1R-19L, and 10-28

2000	POLY	JUKGO	RUYKI	4 NM Holding Pattern
* LNAV only.	JUNTI 2.5 NM to RW28	1600	277°	2000
RW28	860*	1600	277°	GP 3.00° TCH 50
2.5 NM	2.3 NM	5.2 NM		
CATEGORY	A	B	C	D
LPV DA		389-1½	363 (400-1½)	
LNAV/VNAV DA		468-1½	442 (500-1½)	
LNAV MDA	520-1	494 (500-1)	520-1½	494 (500-1½)
CIRCLING	600-1	574 (600-1)	680-1¾ 654 (700-1¾)	980-3 954 (1000-3)

TAMPA, FLORIDA
Amdt 1D 17APR25

27°59'N-82°32'W

RNAV (GPS) RWY 28

TAMPA INTL (TPA)

SE-3, 07 AUG 2025 to 04 SEP 2025

SE-3, 07 AUG 2025 to 04 SEP 2025