

TAMPA, FLORIDA




AL-416 (FAA)

25107

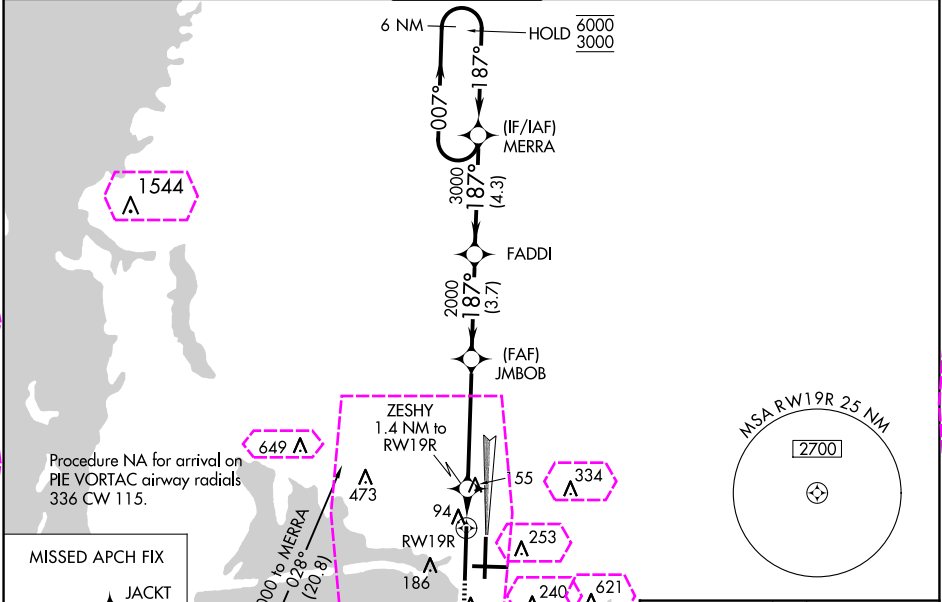
WAAS CH 40406 W19B	APP CRS 187°	Rwy Idg 11002 TDZE 21 Apt Elev 26
--	------------------------	--

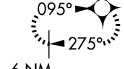

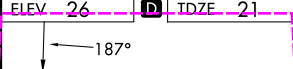
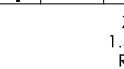
RNAV (GPS) RWY 19R

TAMPA INTL (TPA)

RNP APCH - GPS.		MALSR 	MISSED APPROACH: Climb to 800 then dimbing right turn to 2000 direct JACKT and hold.
 	LNAV procedure NA during simultaneous operations. Simultaneous approach authorized. Use of FD or AP required during simultaneous operations. For uncompensated Baro-VNAV systems, LNAV/VNAV NA below 4°C or above 54°C. For inop ALS, increase LPV visibility Cat E to RVR 4000, LNAV/VNAV visibility all Cats to RVR 6000, and LNAV visibility Cat C/D/E to RVR 6000. * RVR 1800 authorized with use of FD or AP or HUD to DA.		

ARR 126.45	D-ATIS 128.475	DEP 118.5 307.175	TAMPA APP CON 119.5 269.4	TAMPA TOWER 121.7 269.4	GND CON 121.7 269.4	CLNC DEL 133.6	CPDLC
----------------------	--------------------------	-----------------------------	-------------------------------------	-----------------------------------	-------------------------------	--------------------------	-------



					
6 NM		ST PETERSBURG PIE		ELEV. 26	
800		2000		TDZ 21	
JACK		VGSI and RNAV glidepath not coincident (VGSI Angle 3.00/TCH 71).		6 NM Holding Pattern	
		JMBOB		MERRA	
RW19R		2000		187°	
1.4 NM		520		3000	
4.6 NM		3000		007°	
3.7 NM		2000		187°	
4.3 NM		6000		3000	
		GP 3.00°		TCH 54	
CATEGORY		A		B	
LPV DA*		221/24		200 (200-½)	
LNAV/VNAV DA		440/40		419 (500-¾)	
LNAV MDA		440/24		419 (500-½)	
CIRCLING		600-1		574 (600-1)	
		680-1¾		654 (700-1¾)	
		980-3		954 (1000-3)	

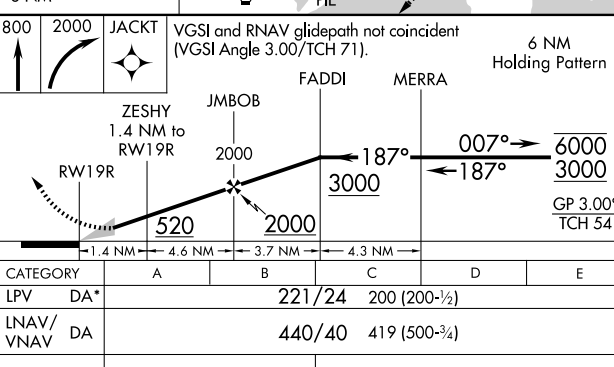


Diagram showing RWY 19R and RWY 18R. Key distances and angles include: 1.4 NM, 4.6 NM, 3.7 NM, 4.3 NM, 187°, 007°, 6000, 3000, GP 3.00°, TCH 54, 11002 X 150, 8300 X 150, 6999 X 150, 28, 187°, 149,

TAMPA, FLORIDA
Amdt 3 17APR25

27°59'N-82°32'W

TAMPA INTL (TPA)
RNAV (GPS) RWY 19R

TAMPA, FLORIDA

AL-416 (FAA)

25219

WAAS CH 40406 W19B	APP CRS 187°	Rwy Ldg 11002 TDZE 21 Apt Elev 26
--	------------------------	--

RNAV (GPS) RWY 19R

TAMPA INTL (TPA)

RNP APCH - GPS.

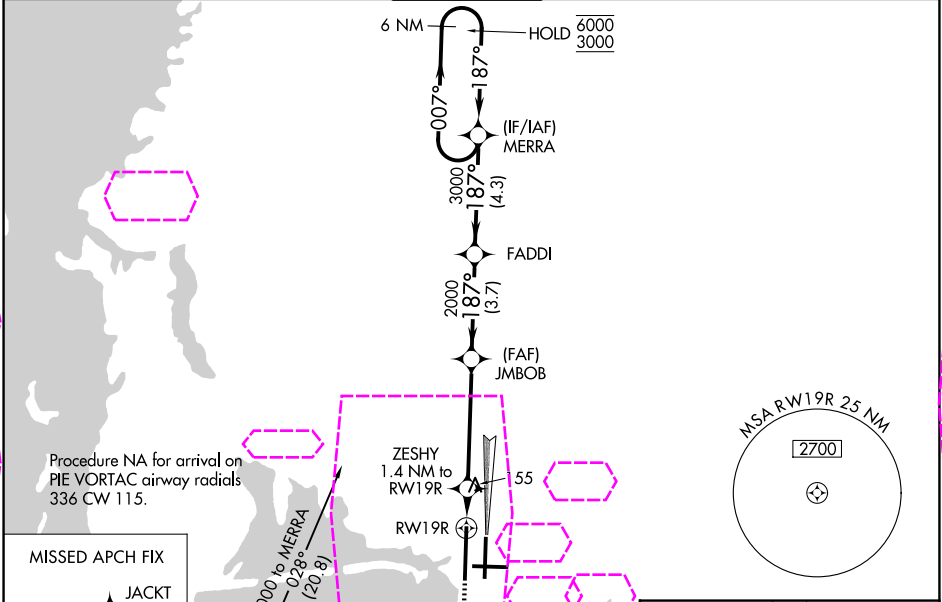
▼ LNAV procedure NA during simultaneous operations. Simultaneous approach authorized.

▲ Use of FD or AP required during simultaneous operations. For uncompensated Baro-VNAV systems, LNAV/VNAV NA below 4°C or above 54°C. For inop ALS, increase LPV visibility Cat E to RVR 4000, LNAV/VNAV visibility all Cats to RVR 6000, and LNAV visibility Cat C/D/E to RVR 6000. * RVR 1800 authorized with use of FD or AP or HUD to DA.

MALSR

MISSED APPROACH: Climb to 800 then climbing right turn to 2000 direct JACK and hold.

ARR 126.45	D-ATIS 128.475	DEP 118.5 307.175	TAMPA APP CON 119.5 269.4	TAMPA TOWER 121.7 269.4	GND CON 121.7 269.4	CLNC DEL 133.6	CPDLC
----------------------	--------------------------	-----------------------------	-------------------------------------	-----------------------------------	-------------------------------	--------------------------	-------



MISSED APCH FIX

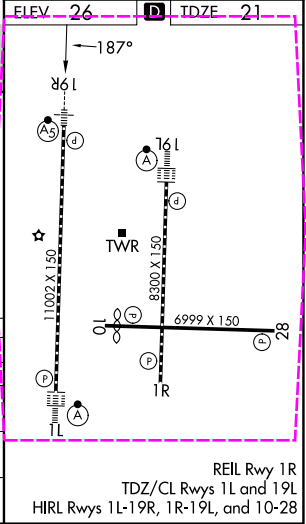
095°
275°
6 NM

800 2000 JACK

VGSI and RNAV glidepath not coincident (VGSI angle 3.00/TCH 71).

6 NM Holding Pattern

CATEGORY	A	B	C	D	E
LPV DA*	221/24 200 (200-½)				
LNAV/VNAV DA	440/40 419 (500-¾)				
LNAV MDA	440/24 419 (500-½) 440/40 419 (500-¾)				
CIRCLING	600-1 574 (600-1) 680-1¾ 654 (700-1¾) 980-3 954 (1000-3)				



TAMPA, FLORIDA
Amdt 3 17APR25

27°59'N-82°32'W

TAMPA INTL (TPA) RNAV (GPS) RWY 19R

SE-3, 07 AUG 2025 to 04 SEP 2025

SE-3, 07 AUG 2025 to 04 SEP 2025