

WAAS CH <b>49100</b> <b>W19A</b>	APP CRS <b>187°</b>	Rwy Idg <b>8300</b> TDZE <b>26</b> Apt Elev <b>26</b>
--	------------------------	---

RNAV (GPS) RWY 19L

TAMPA INTL (TPA)

RNP APCH - GPS.

**⚠** LNAV procedure NA during simultaneous operations. For uncompensated Baro-VNAV systems, LNAV/VNAV NA below 4°C or above 54°C. Simultaneous approach authorized.

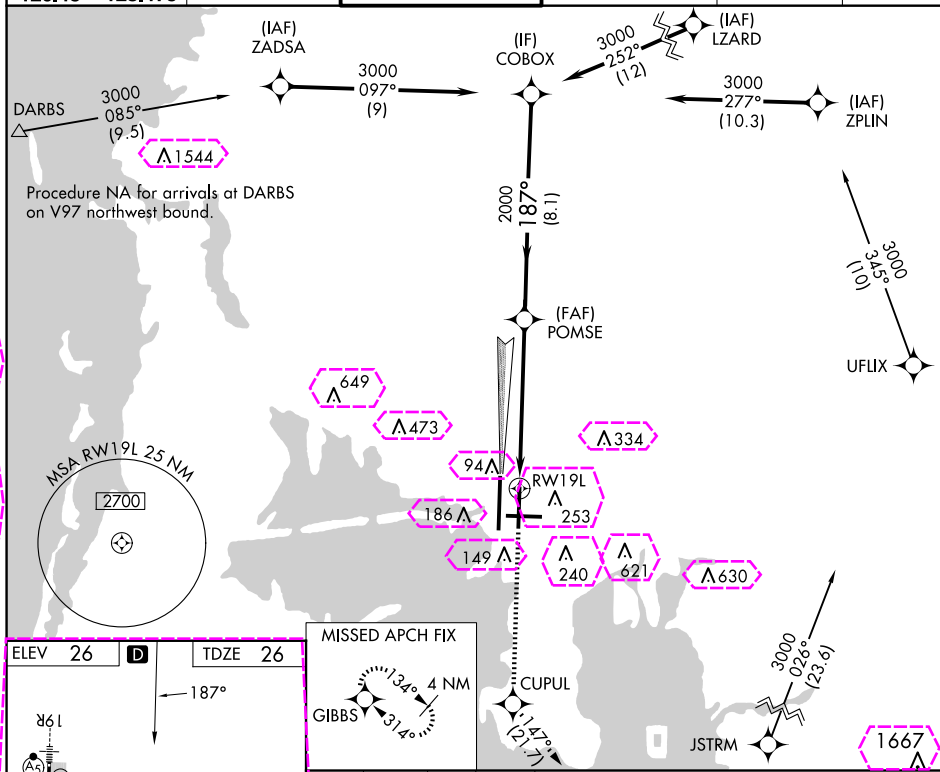
**A** Use of FD or AP required during simultaneous operations. For inop ALS, increase LNAV/VNAV visibility all Cats to RVR 6000, and LNAV visibility Cat C/D to  $1\frac{1}{2}$  SM.

ALSF-2

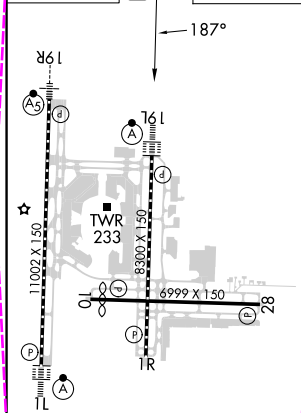


**MISSED APPROACH:**  
Climb to 2000 direct  
CUPUL and on track  
147° to GIBBS and hold.

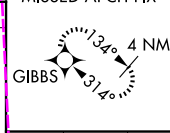
ARR	D-ATIS	DEP	TAMPA APP CON	TAMPA TOWER	GND CON	CLNC DEL	CPDLC
126.45	128.475		118.5 307.175	119.5 269.4	121.7 269.4	133.6	





ELEV 26	<b>D</b>	TDZE 26
---------	----------	---------

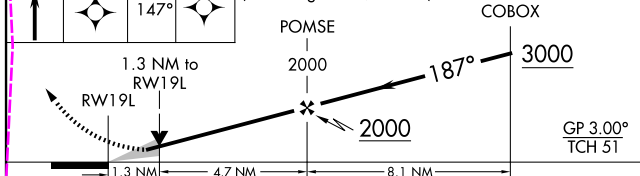


MISSED APCH FIX



2000 ↑	CUPUL 	tr 147°	GIBBS 
-----------	--	------------	--

VGSI and RNAV glidepath not coincident  
(VGSI Angle 3.00/TCH 74).



CATEGORY		A		B		C		D	
LPV	DA	226/18				200 (200-½)			
LNAPV	DA	440/40				414 (500-¾)			
VNAV	DA								
LNAPV	MDA	520/24 494 (500-½)				520/50 494 (500-1)			
<b>CIRCLING</b>		600-1 574 (600-1)				680-1¾ 654 (700-1¾) 980-3 954 (1000-3)			

TAMPA, FLORIDA

Amdt 3 17APR25

TAMPA INTL (TPA)

27°59'N-82°32'W

RNAV (GPS) RWY 19L

25219

RNAV (GPS) RWY 19L

TAMPA INTL (TPA)

WAAS CH <b>49100</b> <b>W19A</b>	APP CRS <b>187°</b>	Rwy Ldg <b>8300</b> TDZE <b>26</b> Apt Elev <b>26</b>
--	------------------------	---

RNP APCH - GPS.
-----------------

**▼** LNAV procedure NA during simultaneous operations. For uncompensated Baro-VNAV systems, LNAV/VNAV NA below 4°C or above 54°C. Simultaneous approach authorized.

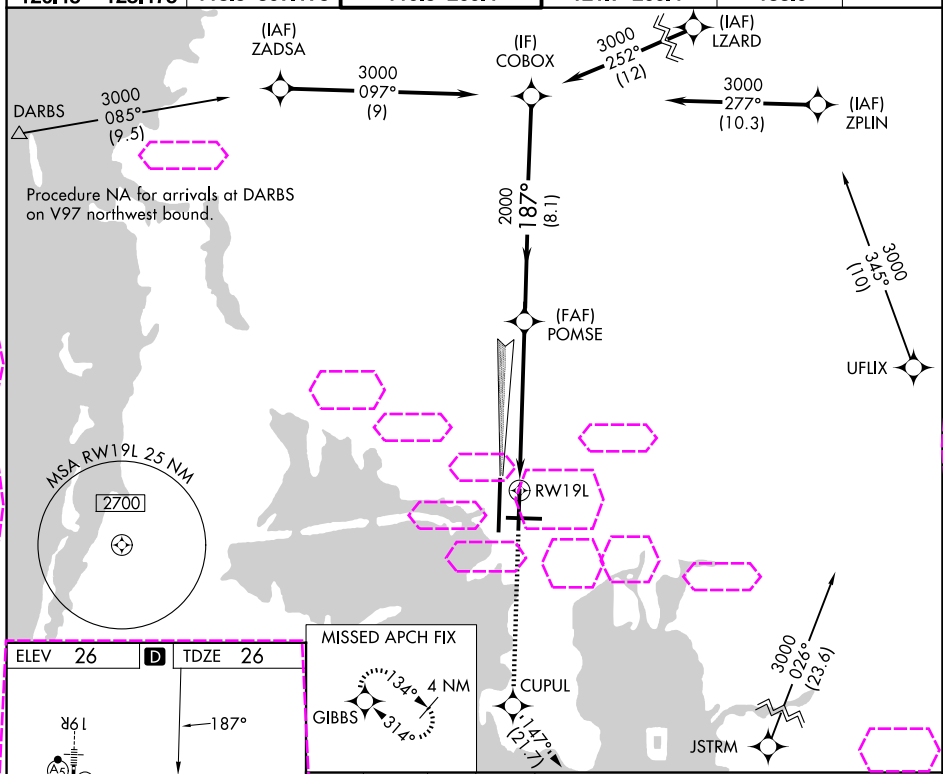
**A** Use of FD or AP required during simultaneous operations. For inop ALS, increase LNAV/VNAV visibility all Cats to RVR 6000, and LNAV visibility Cat C/D to  $1\frac{1}{2}$  SM.

ALSF-2



**MISSED APPROACH:**  
Climb to 2000 direct  
CUPUL and on track  
147° to GIBBS and hold.

ARR	D-ATIS	TAMPA APP CON	TAMPA TOWER	GND CON	CLNC DEL	CPDLC
126.45	128.475	118.5 307.175	119.5 269.4	121.7 269.4	133.6	



MISSED APCH FIX



2000 ↑	CUPUL ✱	tr 147° ✱	VGSI and RNAV glidepath not coincident (VGSI Angle 3.00/TCH 74).			
<p>1.3 NM to RW19L</p> <p>1.3 NM</p> <p>4.7 NM</p> <p>8.1 NM</p> <p>POMSE 2000</p> <p>COBOX 3000</p> <p>187°</p> <p>GP 3.00° TCH 51</p>						
CATEGORY		A		B	C	D
LPV	DA	226/18		200 (200-½)		
RNAV/ VNAV	DA	440/40		414 (500-¾)		
RNAV	MDA	520/24	494 (500-½)	520/50		494 (500-1)
CIRCLING		600-1	574 (600-1)	680-1¼ 654 (700-1¾)		980-3 954 (1000-3)

TAMPA, FLORIDA

Amdt 3 17APR25

27°59'N-82°32'W

TAMPA INTL (TPA)

RNAV (GPS) RWY 19L

SE-3, 07 AUG 2025 to 04 SEP 2025

SE-3, 07 AUG 2025 to 04 SEP 2025