

TAMPA, FLORIDA

AL-416 (FAA)

25107

WAAS CH 77720 W10A	APP CRS 097°	Rwy Idg 6501 TDZE 22 Apt Elev 26
--	------------------------	---

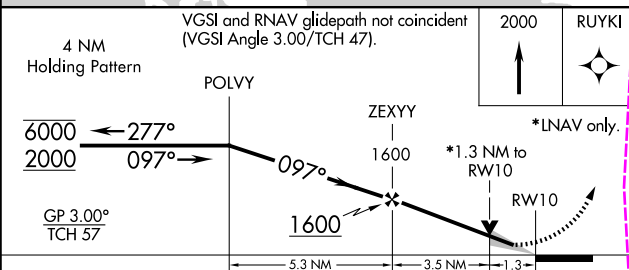
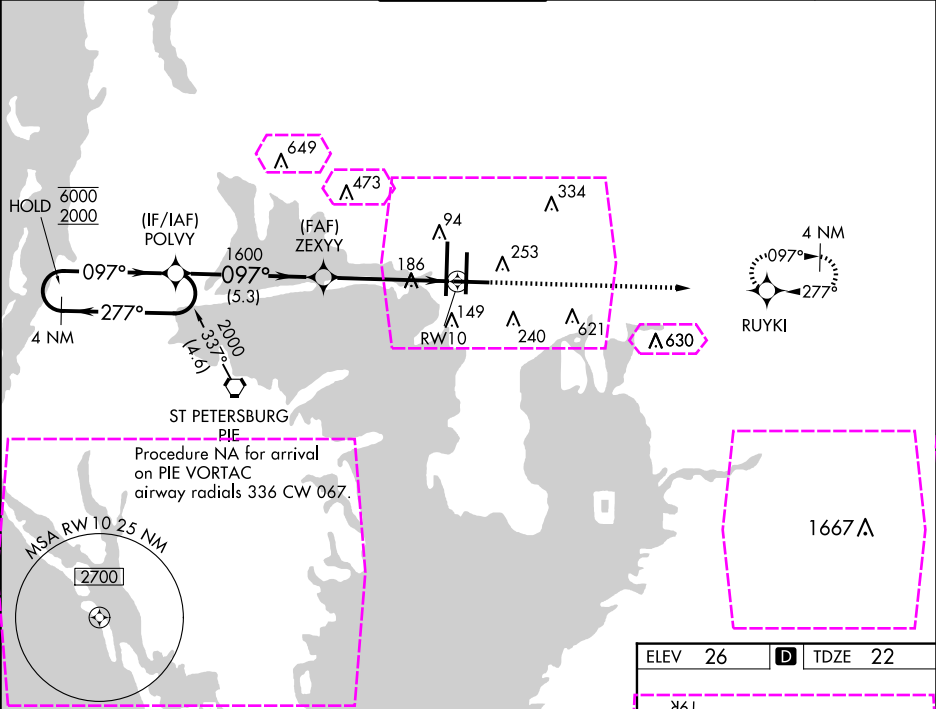
RNAV (GPS) RWY 10
TAMPA INTL (TPA)

RNP APCH.

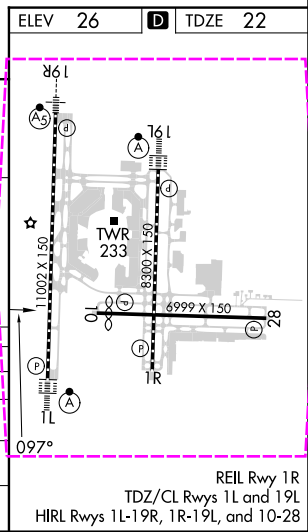
▼ For uncompensated Baro-VNAV systems, LNAV/VNAV NA below 2°C or above 54°C.

MISSED APPROACH: Climb to 2000 direct RUYKI and hold.

ARR	D-ATIS	DEP	TAMPA APP CON	TAMPA TOWER	GND CON	CLNC DEL	CPDLC
126.45		128.475	118.5 307.175	119.5 269.4	121.7 269.4	133.6	



CATEGORY	A	B	C	D
LPV DA		272-1	250 (300-1)	
LNAV/VNAV DA		436-1 $\frac{3}{8}$	414 (500-1 $\frac{3}{8}$)	
LNAV MDA	480-1	458 (500-1)	480-1 $\frac{3}{8}$	458 (500-1 $\frac{3}{8}$)
CIRCLING	600-1	574 (600-1)	680-1 $\frac{3}{4}$ 654 (700-1 $\frac{3}{4}$)	980-3 954 (1000-3)



TAMPA, FLORIDA
Amdt 2B 17APR25

27°59'N-82°32'W

TAMPA INTL (TPA)
RNAV (GPS) RWY 10

TAMPA, FLORIDA

AL-416 (FAA)

25219

WAAS CH 77720 W10A	APP CRS 097°	Rwy Ldg 6501 TDZE 22 Apt Elev 26
--	------------------------	---

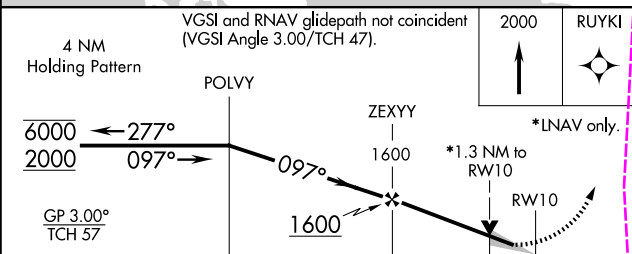
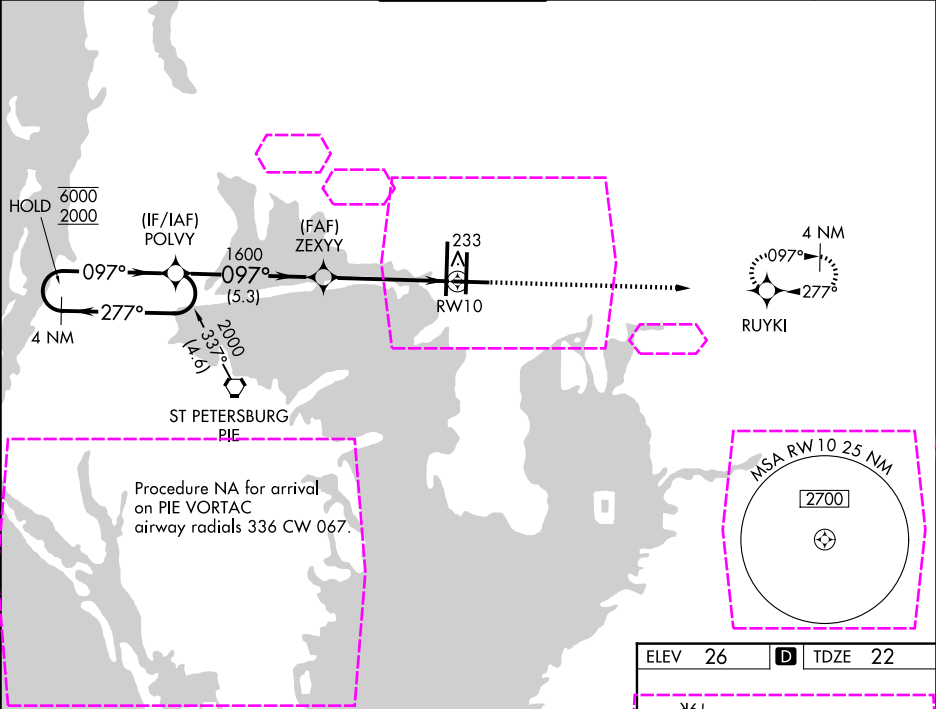
RNAV (GPS) RWY 10
TAMPA INTL (TPA)

RNP APCH.

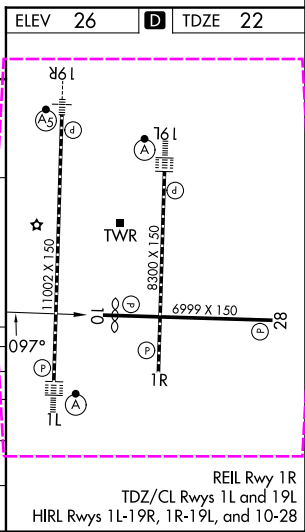
▼ For uncompensated Baro-VNAV systems, LNAV/VNAV NA below 2°C or above 54°C.
▲

MISSED APPROACH: Climb to 2000 direct RUYKI and hold.

ARR 126.45	D-ATIS 128.475	DEP 118.5 307.175	TAMPA APP CON 119.5 269.4	TAMPA TOWER 121.7 269.4	GND CON 133.6	CLNC DEL CPDLC
----------------------	--------------------------	-----------------------------	-------------------------------------	-----------------------------------	-------------------------	--------------------------



CATEGORY	A	B	C	D
LPV DA		272-1	250 (300-1)	
LNAV/VNAV DA		436-1 $\frac{3}{8}$	414 (500-1 $\frac{3}{8}$)	
LNAV MDA	480-1	458 (500-1)	480-1 $\frac{3}{8}$	458 (500-1 $\frac{3}{8}$)
CIRCLING	600-1	574 (600-1)	680-1 $\frac{3}{4}$ 654 (700-1 $\frac{3}{4}$)	980-3 954 (1000-3)



TAMPA, FLORIDA
Amdt 2B 17APR25

27°59'N-82°32'W

RNAV (GPS) RWY 10
TAMPA INTL (TPA)