

TAMPA, FLORIDA

AL-416 (FAA)

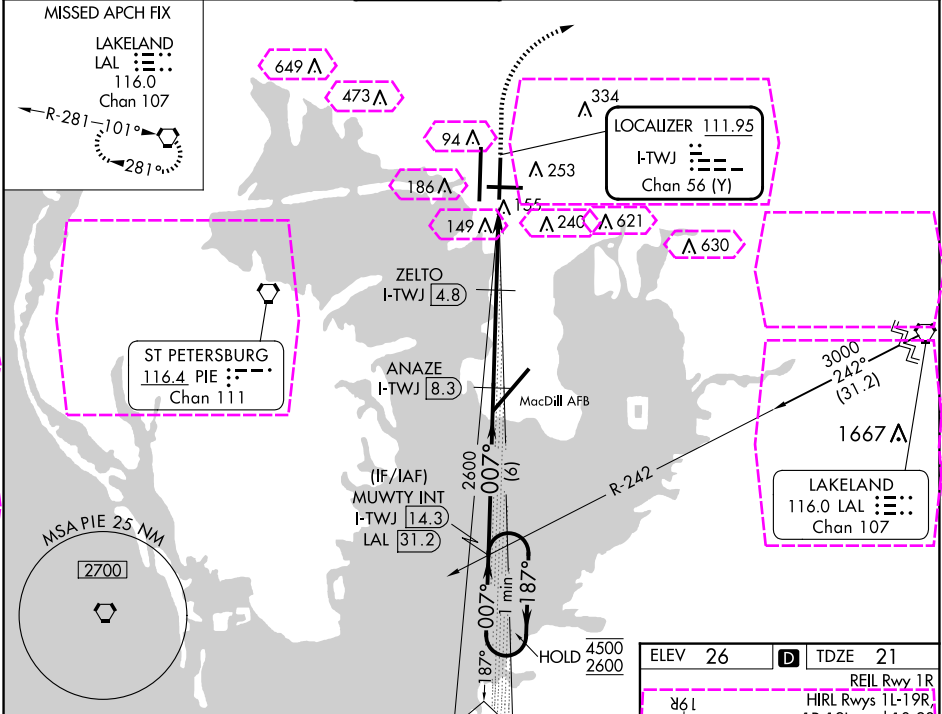
25107

LOC/DME I-TWJ 111.95 Chan 56 (Y)	APP CRS 007°	Rwy Idg TDZE 21 Apt Elev 26	8300
------------------------------------------------------	------------------------	-------------------------------------------------	-------------

LOC RWY 1R
TAMPA INTL (TPA)

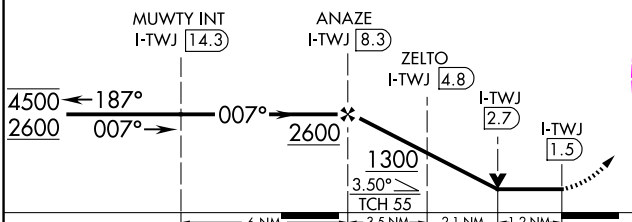
DME required.		MISSED APPROACH: Climb to 500 then climbing right turn to 2000 direct LAL VORTAC and hold.			
---------------	--	--------------------------------------------------------------------------------------------	--	--	--

ARR	D-ATIS	DEP	TAMPA APP CON	TAMPA TOWER	GND CON	CLNC DEL	CPDLC
126.45		128.475	118.5 307.175	119.5 269.4	121.7 269.4	133.6	

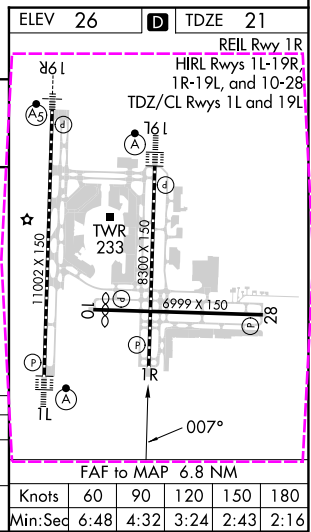


VGSI and descent angle not coincident
(VGSI Angle 3.00/TCH 71).

One Minute Holding Pattern



CATEGORY	A	B	C	D
S-LOC 1R	460/55	439 (500-1)	460-1¼	439 (500-1¼)
CIRCLING	600-1	574 (600-1)	680-1¾ 654 (700-1¾)	980-3 954 (1000-3)



TAMPA, FLORIDA
Amdt 4D 17APR25

27°59'N-82°32'W

TAMPA INTL (TPA)
LOC RWY 1R

Knots	60	90	120	150	180
Min:Sec	6:48	4:32	3:24	2:43	2:16

TAMPA, FLORIDA

AL-416 (FAA)

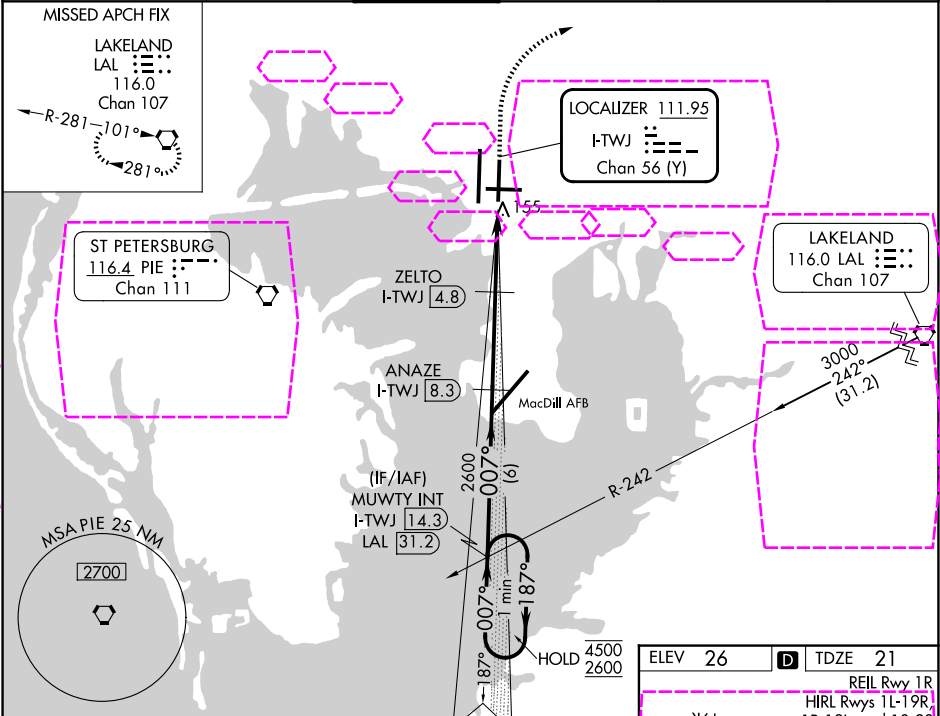
25219

LOC/DME I-TWJ 111.95 Chan 56 (Y)	APP CRS 007°	Rwy Ldg 8300 TDZE 21 Apt Elev 26
------------------------------------------------------	------------------------	-------------------------------------------------------------

LOC RWY 1R
TAMPA INTL (TPA)

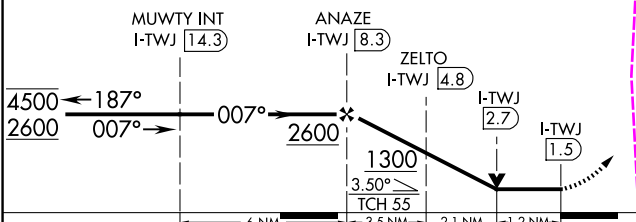
DME required.		MISSED APPROACH: Climb to 500 then climbing right turn to 2000 direct LAL VORTAC and hold.			
---------------	--	--------------------------------------------------------------------------------------------	--	--	--

ARR 126.45	D-ATIS 128.475	DEP 128.475	TAMPA APP CON 118.5 307.175	TAMPA TOWER 119.5 269.4	GND CON 121.7 269.4	CLNC DEL 133.6	CPDLC
----------------------	--------------------------	-----------------------	---------------------------------------	-----------------------------------	-------------------------------	--------------------------	-------

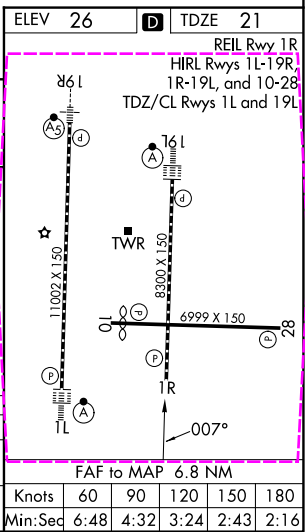


VGSI and descent angle not coincident
(VGSI Angle 3.00/TCH 71).

One Minute Holding Pattern



CATEGORY	A	B	C	D
S-LOC 1R	460/55	439 (500-1)	460-1¼	439 (500-1¼)
CIRCLING	600-1	574 (600-1)	680-1¾ 654 (700-1¾)	980-3 954 (1000-3)



TAMPA, FLORIDA
Amdt 4D 17APR25

27°59'N-82°32'W

TAMPA INTL (TPA)
LOC RWY 1R

SE-3, 07 AUG 2025 to 04 SEP 2025

SE-3, 07 AUG 2025 to 04 SEP 2025