

TAMPA, FLORIDA

AL-416 (FAA)

25107

LOC/DME I-AMP 108.9 Chan 26	APP CRS 007°	Rwy Idg 10800 TDZE 11 Apt Elev 26
---	------------------------	--

ILS or LOC RWY 1L

TAMPA INTL (TPA)

DME and RADAR required.

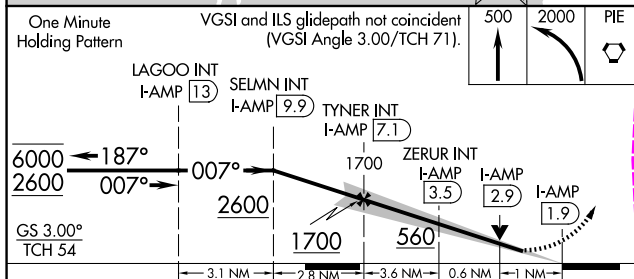
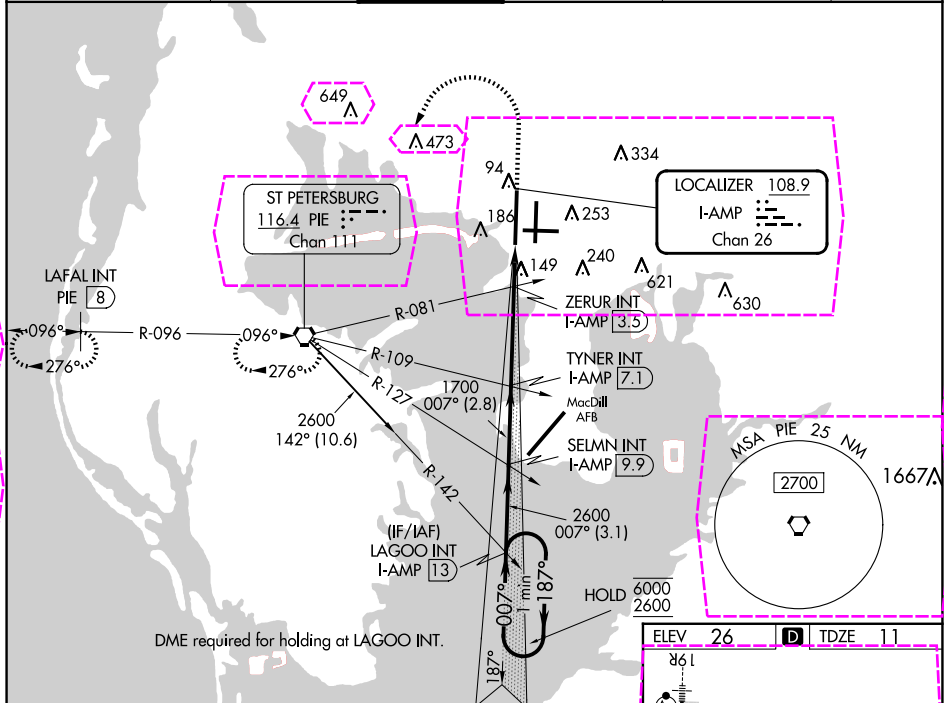
- Simultaneous approach authorized.
- For inop ALS, increase S-ILS 1L Cat E visibility to RVR 4000 and S-LOC 1L Cat E visibility to RVR 6000.

ALSF-2

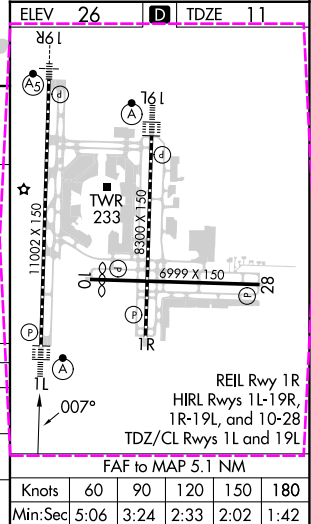


MISSED APPROACH: Climb to 500 then climbing left turn to 2000 direct PIE VORTAC and hold, continue climb-in-hold to 2000. (TACAN aircraft climb to 500 then climbing left turn to 2000 direct PIE VORTAC then on PIE VORTAC R-276 to LAFAL INT/PIE 8 DME and hold W, RT, 096° inbound).

ARR 126.45	D-ATIS 128.475	DEP 128.475	TAMPA APP CON 118.5 307.175	TAMPA TOWER 119.5 269.4	GND CON 121.7 269.4	CLNC DEL 133.6	CPDLC
----------------------	--------------------------	-----------------------	---------------------------------------	-----------------------------------	-------------------------------	--------------------------	-------



CATEGORY	A	B	C	D	E
S-ILS 1L	211/18 200 (200-½)				
S-LOC 1L	400/24	389 (400-½)	400/35	389 (400-¾)	
CIRCLING	600-1	574 (600-1)	680-1¾ 654 (700-1¾)	980-3	954 (1000-3)



TAMPA, FLORIDA
Amdt 19 17APR25

27°59'N-82°32'W

TAMPA INTL (TPA)

ILS or LOC RWY 1L

SE-3, 10 JUL 2025 to 07 AUG 2025

SE-3, 10 JUL 2025 to 07 AUG 2025


TAMPA, FLORIDA

AL-416 (FAA)

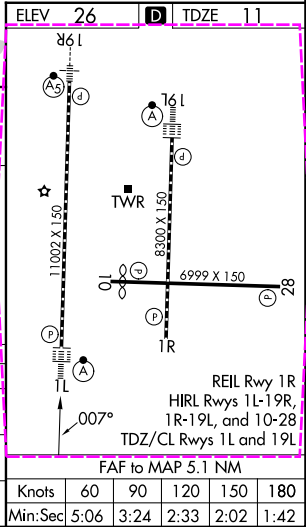
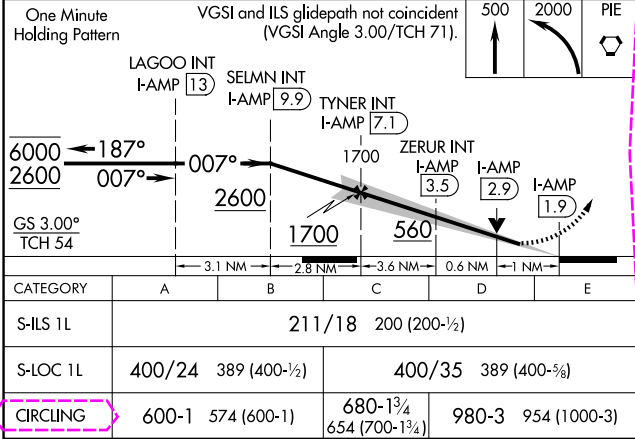
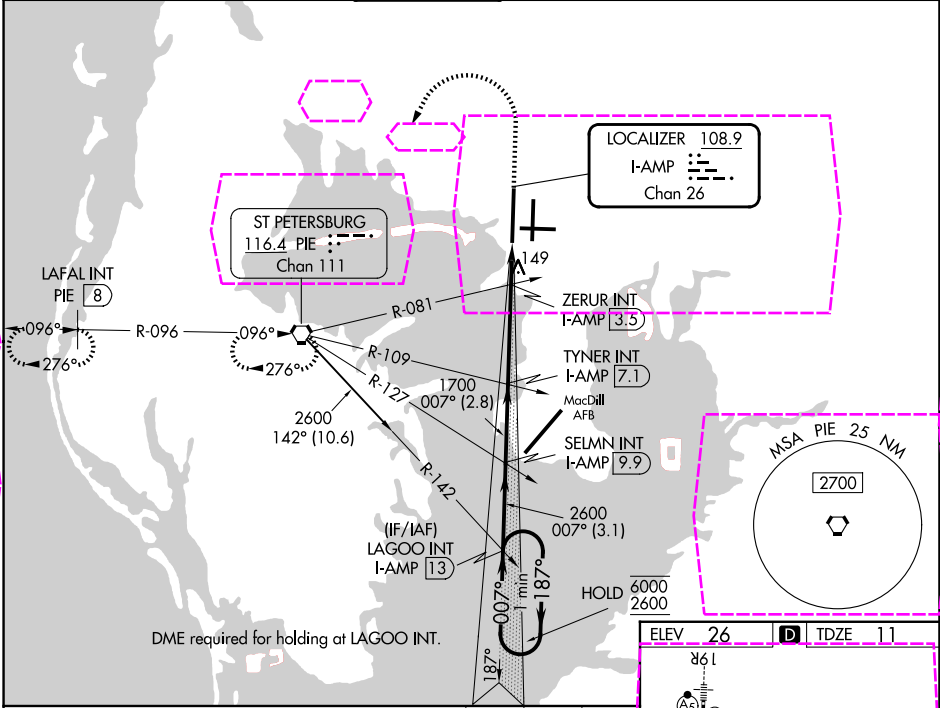
25219

LOC/DME I-AMP 108.9 Chan 26	APP CRS 007°	Rwy Ldg TDZE 11 Apt Elev 26
---	------------------------	---

ILS or LOC RWY 1L
TAMPA INTL (TPA)

DME and RADAR required.		ALSF-2 	MISSED APPROACH: Climb to 500 then climbing left turn to 2000 direct PIE VORTAC and hold, continue climb-in-hold to 2000. (TACAN aircraft climb to 500 then climbing left turn to 2000 direct PIE VORTAC then on PIE VORTAC R-276 to LAFAL INT/PIE 8 DME and hold W, RT, 096° inbound).
Simultaneous approach authorized. For inop ALS, increase S-ILS 1L Cat E visibility to RVR 4000 and S-LOC 1L Cat E visibility to RVR 6000.			

ARR 126.45	D-ATIS 128.475	DEP 118.5 307.175	TAMPA APP CON 119.5 269.4	TAMPA TOWER 121.7 269.4	GND CON 133.6	CINC DEL 133.6	CPDLC
----------------------	--------------------------	-----------------------------	-------------------------------------	-----------------------------------	-------------------------	--------------------------	-------



TAMPA, FLORIDA
Amdt 19 17APR25

27°59'N-82°32'W

TAMPA INTL (TPA)
ILS or LOC RWY 1L

SE-3, 07 AUG 2025 to 04 SEP 2025

SE-3, 07 AUG 2025 to 04 SEP 2025