



TAMPA, FLORIDA

AL-416 (FAA)

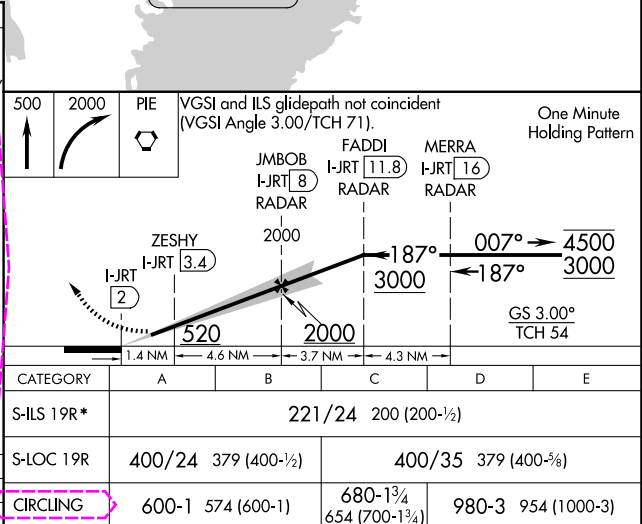
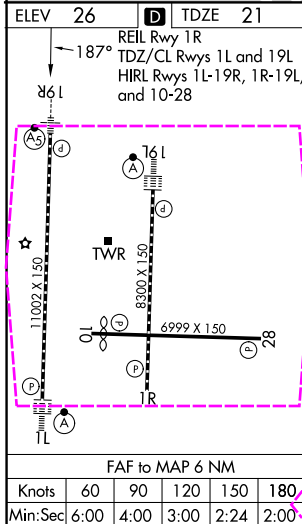
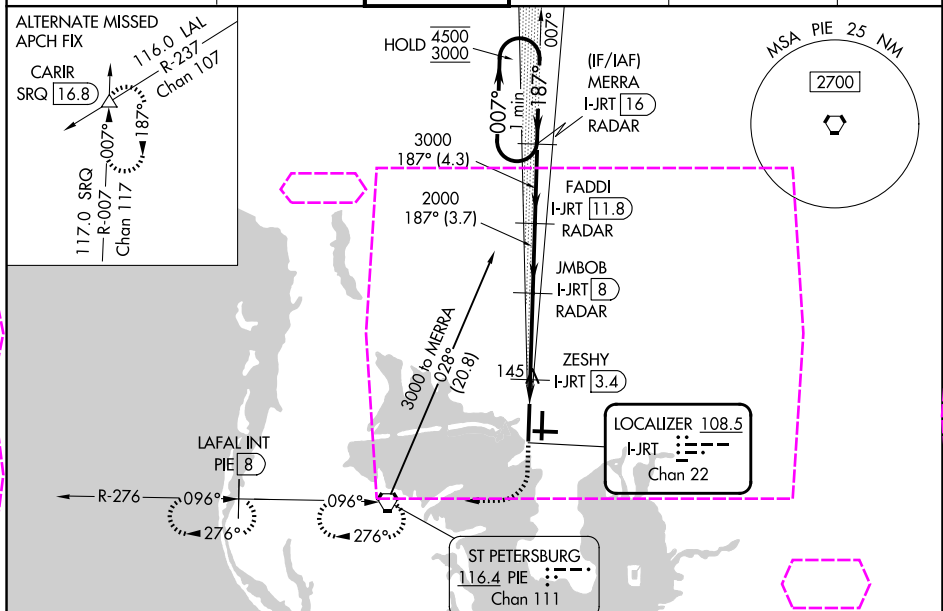
25219

LOC/DME I-JRT <b>108.5</b> Chan <b>22</b>	APP CRS <b>187°</b>	Rwy Ldg <b>11002</b> TDZE <b>21</b> Apt Elev <b>26</b>
---	------------------------	--

# ILS or LOC RWY 19R

TAMPA INTL (TPA)

DME or RADAR required.				<div>MALSR</div> <div></div>	MISSED APPROACH: Climb to 500 then climbing right turn to 2000 direct PIE VORTAC and hold, continue climb-in-hold 2000. (TACAN aircraft climb to 500 then climbing right turn to 2000 direct PIE VORTAC then on PIE VORTAC R-276 to LAFAL INT/PIE 8 DME and hold W, RT, 096° inbound.)		
<div><div><div>▼</div><div>▲</div></div><div>Simultaneous approach authorized. For inop ALS, increase S-ILS 19R Cat E visibility to RVR 4000 and S-LOC 19R Cats C/D/E visibility to RVR 5500. *RVR 1800 authorized with use of FD or AP or HUD to DA.</div></div>							
ARR	D-ATIS	DEP	TAMPA APP CON	TAMPA TOWER	GND CON	CLNC DEL	CPDLC
126.45	128.475		118.5 307.175	119.5 269.4	121.7 269.4	133.6	



TAMPA, FLORIDA  
Amdt 7 17APR25

27°59'N-82°32'W

TAMPA INTL (TPA)

ILS or LOC RWY 19R

SE-3, 07 AUG 2025 to 04 SEP 2025

SE-3, 07 AUG 2025 to 04 SEP 2025