



TAMPA, FLORIDA

AL-416 (FAA)

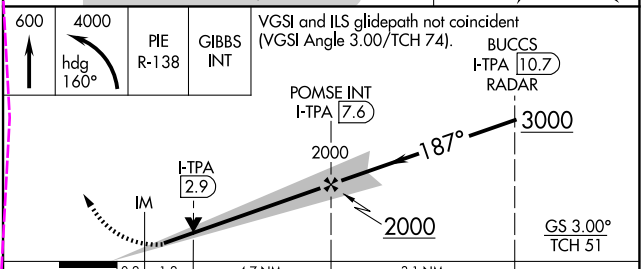
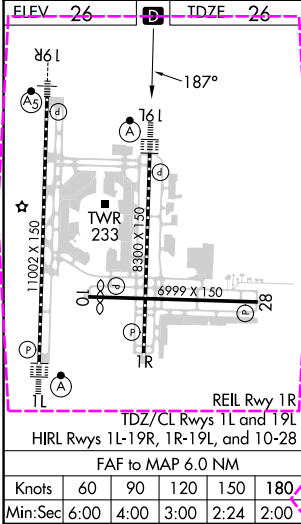
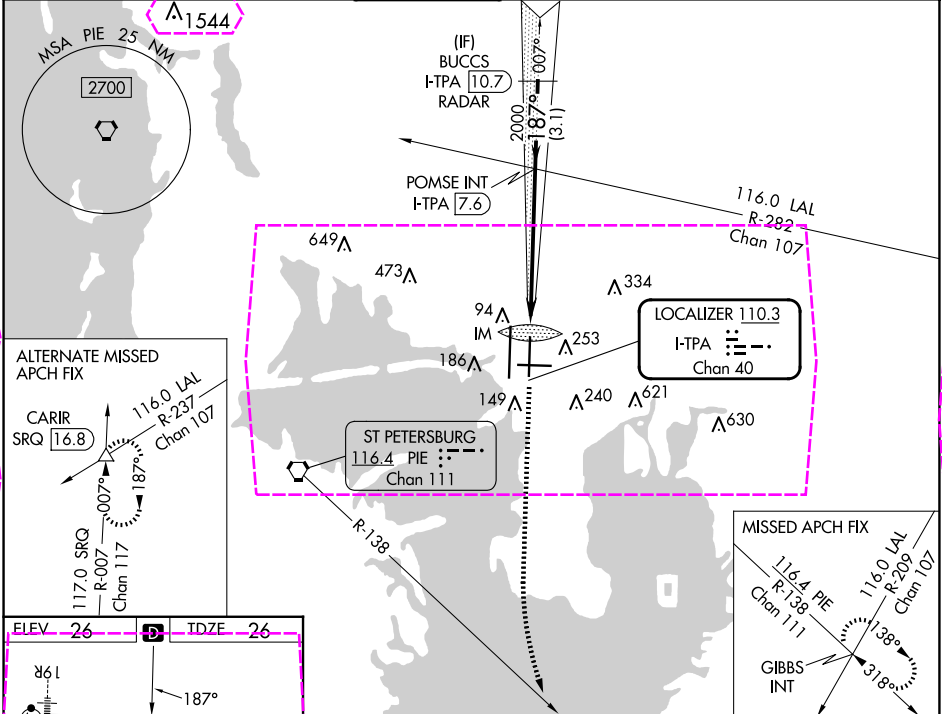
25163

LOC/DME I-TPA <b>110.3</b> Chan <b>40</b>	APP CRS <b>187°</b>	Rwy Ldg TDZE <b>26</b> Apt Elev <b>26</b>	<b>8300</b>
---	------------------------	---	-------------

ILS or LOC RWY 19L  
TAMPA INTL (TPA)

RADAR required for procedure entry.		ALSIF-2 	MISSED APPROACH: Climb to 600 then climbing left turn to 4000 on heading 160° and on PIE VORTAC R-138 to GIBBS INT and hold.
	Simultaneous approach authorized. For inop ALS, increase S-ILS 19L Cat E visibility to RVR 4000 and S-LOC 19L Cat C, D, and E visibility to 1 3/8 SM.		

ARR <b>126.45</b>	D-ATIS <b>128.475</b>	DEP <b>118.5 307.175</b>	TAMPA APP CON <b>119.5 269.4</b>	TAMPA TOWER <b>121.7 269.4</b>	GND CON <b>133.6</b>	CLNC DEL <b>133.6</b>	CPDLC
----------------------	--------------------------	-----------------------------	-------------------------------------	-----------------------------------	-------------------------	--------------------------	-------



CATEGORY	A	B	C	D	E
S-ILS 19L	226/18 200 (200-1/2)				
S-LOC 19L	520/24	494 (500-1/2)	520/50	494 (500-1)	
CIRCLING	600-1	574 (600-1)	680-1 3/4 654 (700-1 3/4)	980-3 954 (1000-3)	NA

TAMPA, FLORIDA  
Amdt 42A 12JUN25

27°59'N-82°32'W

TAMPA INTL (TPA)  
ILS or LOC RWY 19L

SE-3, 10 JUL 2025 to 07 AUG 2025

SE-3, 10 JUL 2025 to 07 AUG 2025

TAMPA, FLORIDA

AL-416 (FAA)

25219

LOC/DME I-TPA <b>110.3</b> Chan <b>40</b>	APP CRS <b>187°</b>	Rwy Ldg TDZE <b>26</b> Apt Elev <b>26</b>
---	------------------------	---

# ILS or LOC RWY 19L

TAMPA INTL (TPA)

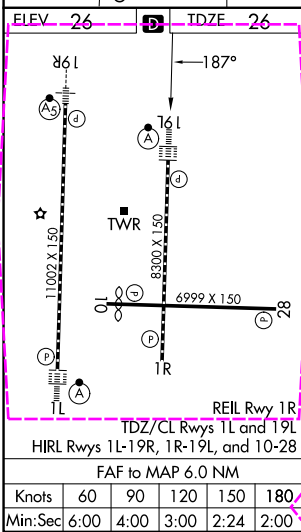
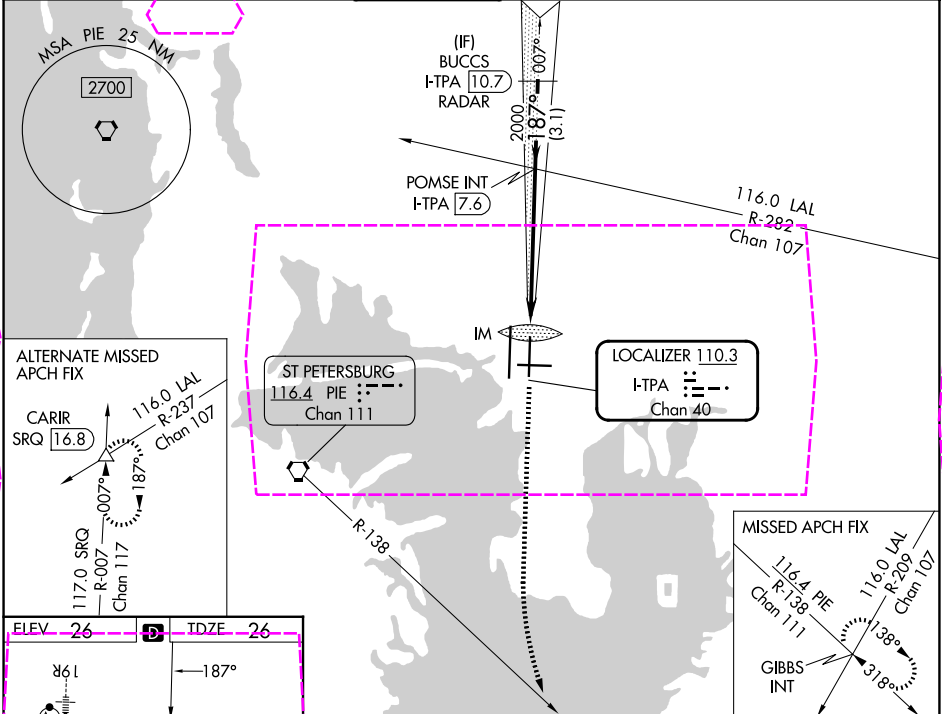
RADAR required for procedure entry.

Simultaneous approach authorized. For inop ALS, increase S-ILS 19L Cat E visibility to RVR 4000 and S-LOC 19L Cat C, D, and E visibility to 1 3/8 SM.

ALS-2

MISSED APPROACH: Climb to 600 then climbing left turn to 4000 on heading 160° and on PIE VORTAC R-138 to GIBBS INT and hold.

ARR <b>126.45</b>	D-ATIS <b>128.475</b>	DEP <b>118.5 307.175</b>	TAMPA APP CON <b>119.5 269.4</b>	TAMPA TOWER <b>121.7 269.4</b>	GND CON <b>133.6</b>	CLNC DEL <b>133.6</b>	CPDLC
----------------------	--------------------------	-----------------------------	-------------------------------------	-----------------------------------	-------------------------	--------------------------	-------



	600	4000	PIE R-138	GIBBS INT	VGSI and ILS glidepath not coincident (VGSI Angle 3.00/TCH 74).	BUCCS I-TPA 110.7 RADAR
	0.2	1.2	4.7 NM	3.1 NM		
CATEGORY	A	B	C	D	E	
S-ILS 19L	226/18 200 (200-1/2)					
S-LOC 19L	520/24	494 (500-1/2)	520/50	494 (500-1)		
CIRCLING	600-1	574 (600-1)	680-1 3/4 654 (700-1 3/4)	980-3 954 (1000-3)	NA	

TAMPA, FLORIDA  
Amdt 42A 12JUN25

27°59'N-82°32'W

TAMPA INTL (TPA)  
ILS or LOC RWY 19L

SE-3, 07 AUG 2025 to 04 SEP 2025

SE-3, 07 AUG 2025 to 04 SEP 2025