

TAMPA, FLORIDA

AL-416 (FAA)

25107

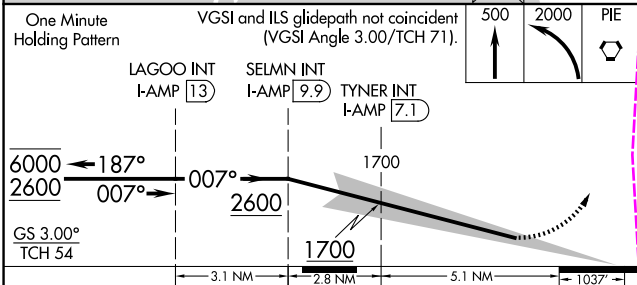
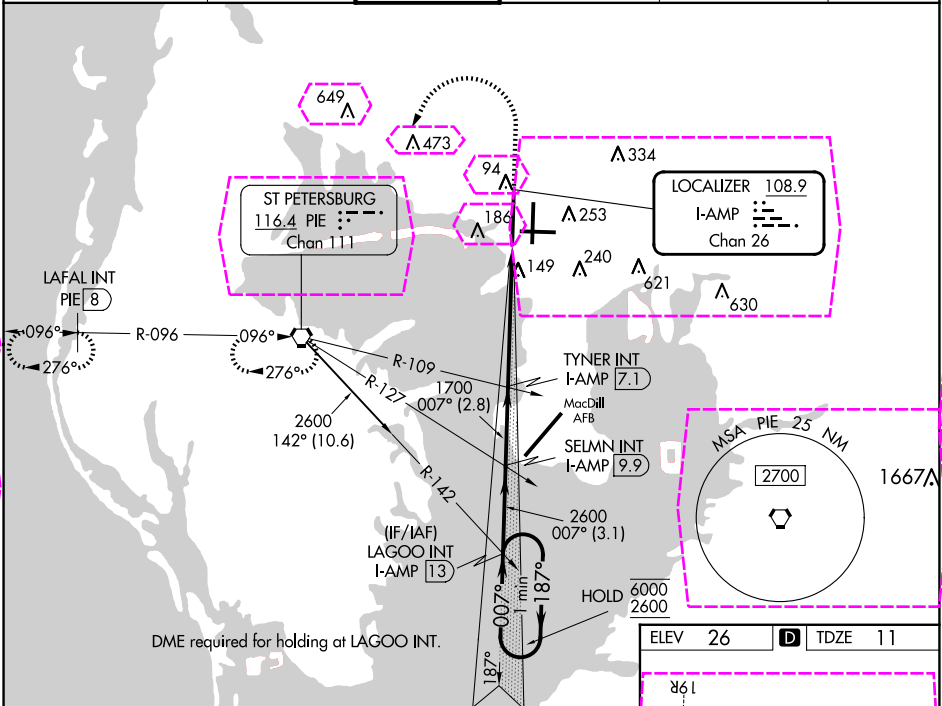
LOC/DME I-AMP 108.9 Chan 26	APP CRS 007°	Rwy Idg 10800 TDZE 11 Apt Elev 26
---	------------------------	--

ILS RWY 1L (SA CAT I)

TAMPA INTL (TPA)

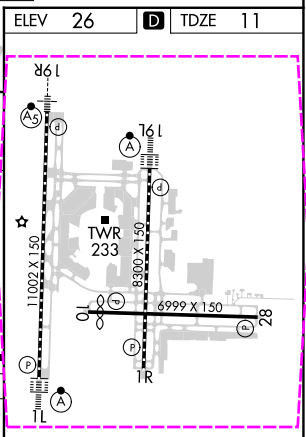
DME and RADAR required.	ALSIF-2	MISSED APPROACH: Climb to 500 then climbing left turn to 2000 direct PIE VORTAC and hold, continue climb-in-hold to 2000. (TACAN aircraft climb to 500 then climbing left turn to 2000 direct PIE VORTAC then on PIE VORTAC R-276 to LAFAL INT/PIE 8 DME and hold W, RT, 096° inbound).
-------------------------	---------	---

ARR 126.45	D-ATIS 128.475	DEP 128.475	TAMPA APP CON 118.5 307.175	TAMPA TOWER 119.5 269.4	GND CON 121.7 269.4	CLNC DEL 133.6	CPDLC
----------------------	--------------------------	-----------------------	---------------------------------------	-----------------------------------	-------------------------------	--------------------------	-------



CATEGORY	A	B	C	D
S-ILS 1L	RA 155/14 150 DA 161			

SA CATEGORY I ILS - SPECIAL AIRCREW & AIRCRAFT CERTIFICATION REQUIRED



TAMPA, FLORIDA
Amdt 19 17APR25

27°59'N-82°32'W

TAMPA INTL (TPA)
ILS RWY 1L (SA CAT I)

TAMPA, FLORIDA

AL-416 (FAA)

25219

LOC/DME I-AMP 108.9 Chan 26	APP CRS 007°	Rwy Ldg TDZE 11 Apt Elev 26
---	------------------------	---

ILS RWY 1L (SA CAT I)
TAMPA INTL (TPA)

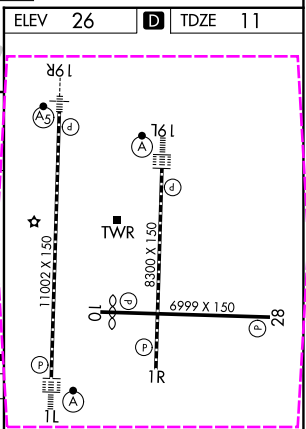
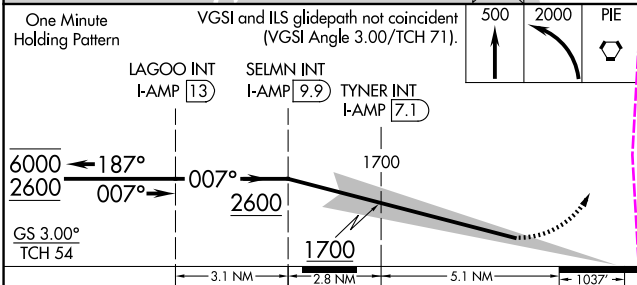
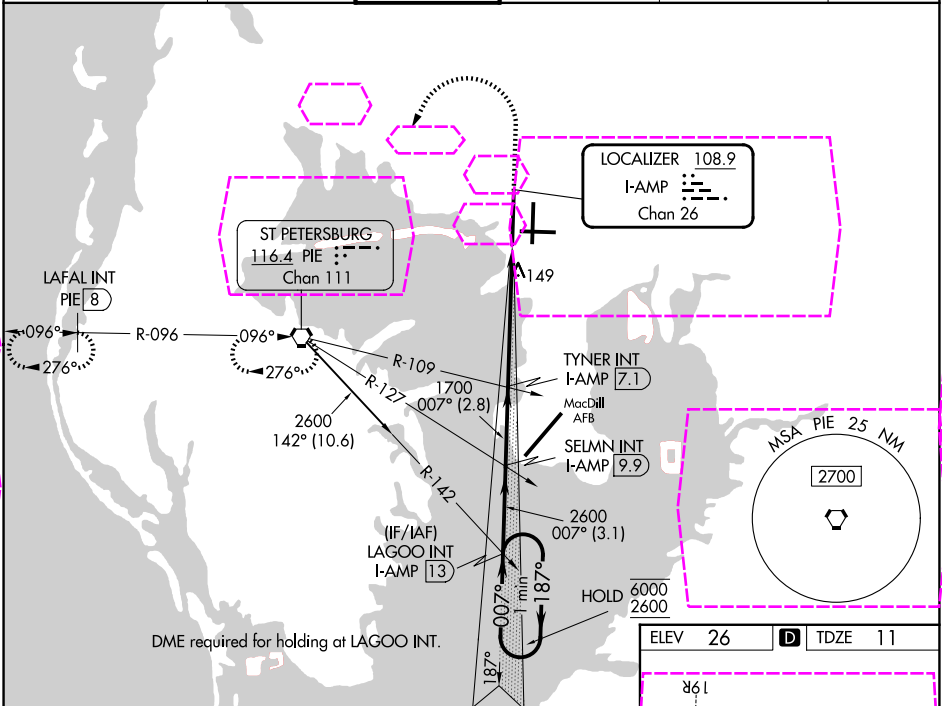
DME and RADAR required.

Simultaneous approach authorized.
Requires specific OPSPEC, MSPEC,
or LOA approval and use of HUD
to DH.

ALSF-2

MISSED APPROACH: Climb to 500 then climbing left turn to 2000 direct PIE VORTAC and hold, continue climb-in-hold to 2000. (TACAN aircraft climb to 500 then climbing left turn to 2000 direct PIE VORTAC then on PIE VORTAC R-276 to LAFAL INT/PIE 8 DME and hold W, RT, 096° inbound).

ARR 126.45	D-ATIS 128.475	DEP 128.475	TAMPA APP CON 118.5 307.175	TAMPA TOWER 119.5 269.4	GND CON 121.7 269.4	CINC DEL 133.6	CPDLC
----------------------	--------------------------	-----------------------	---------------------------------------	-----------------------------------	-------------------------------	--------------------------	-------



CATEGORY	A	B	C	D
S-ILS 1L	RA 155/14 150 DA 161			

SA CATEGORY I ILS - SPECIAL AIRCREW
& AIRCRAFT CERTIFICATION REQUIRED

REIL Rwy 1R
HIRL Rwy 1L-19R,
1R-19L, and 10-28
TDZ/CL Rwy 1L and 19L

TAMPA, FLORIDA
Amdt 19 17APR25

27°59'N-82°32'W

TAMPA INTL (TPA)
ILS RWY 1L (SA CAT I)

SE-3, 07 AUG 2025 to 04 SEP 2025

SE-3, 07 AUG 2025 to 04 SEP 2025