

(BAYPO2.BAYPO) 24137

AL-416 (FAA)

TAMPA INTL (TPA)
TAMPA, FLORIDA

BAYPO TWO DEPARTURE (RNAV)

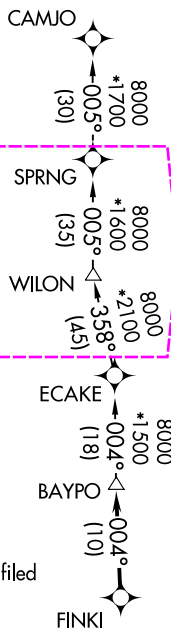
TAMPA DEP CON
118.8 239.3
D-ATIS
128.475
CLNC DEL
133.6
CPDLC
GND CON
121.7 269.4
TAMPA TOWER
119.5 269.4

RNAV 1 - DME/DME/IRU or GPS required.

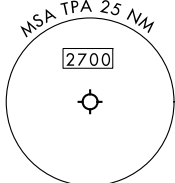
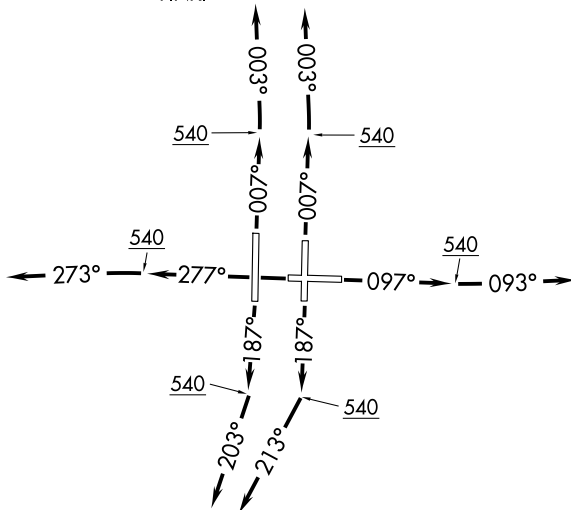
RADAR required.

**TOP ALTITUDE:
6000**TAKEOFF MINIMUMS

Rwys 1L/R, 19R, 28: Standard.

Rwy 10: Standard with minimum climb
of 240'/NM to 800.Rwy 19L: Standard with minimum climb
of 230'/NM to 300.

NOTE: Jet aircraft only.

NOTE: WILON TRANSITION for use by aircraft filed
to Jacksonville area airports only,
or as assigned by ATC.

(CONTINUED ON FOLLOWING PAGE)

NOTE: Chart not to scale.

BAYPO TWO DEPARTURE (RNAV)

(BAYPO2.BAYPO) 16MAY24

TAMPA, FLORIDA
TAMPA INTL (TPA)

SE-3, 10 JUL 2025 to 07 AUG 2025

SE-3, 10 JUL 2025 to 07 AUG 2025

(BAYPO2.BAYPO) 25219

AL-416 (FAA)

TAMPA INTL (TPA)
TAMPA, FLORIDA

BAYPO TWO DEPARTURE (RNAV)

TAMPA DEP CON
118.8 239.3
D-ATIS
128.475
CLNC DEL
133.6
CPDLC
GND CON
121.7 269.4
TAMPA TOWER
119.5 269.4

RNAV 1 - DME/DME/IRU or GPS required.

RADAR required.

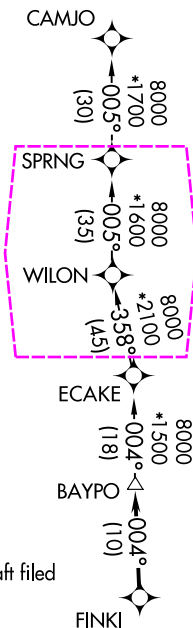
TOP ALTITUDE:
6000

TAKEOFF MINIMUMS

Rwys 1L/R, 19R, 28: Standard.

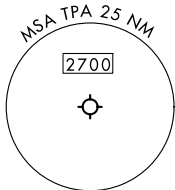
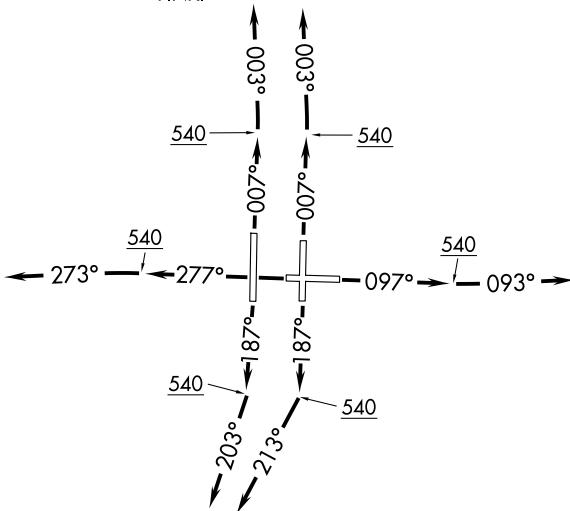
Rwy 10: Standard with minimum climb
of 240'/NM to 800.

Rwy 19L: Standard with minimum climb
of 230'/NM to 300.



NOTE: Jet aircraft only.

NOTE: WILON TRANSITION for use by aircraft filed
to Jacksonville area airports only,
or as assigned by ATC.



(CONTINUED ON FOLLOWING PAGE)

NOTE: Chart not to scale.

BAYPO TWO DEPARTURE (RNAV)

(BAYPO2.BAYPO) 16MAY24

TAMPA, FLORIDA
TAMPA INTL (TPA)

SE-3, 07 AUG 2025 to 04 SEP 2025

SE-3, 07 AUG 2025 to 04 SEP 2025