

VOR RWY 18

EC-2, 10 JUL 2025 to 07 AUG 2025

SOUTH BEND, INDIANA

AL-399 (FAA)

25219

VORTAC GIJ	APP CRS	Rwy Ldg	7101
115.4	181°	TDZE	798
Chan 101		Apt Elev	798

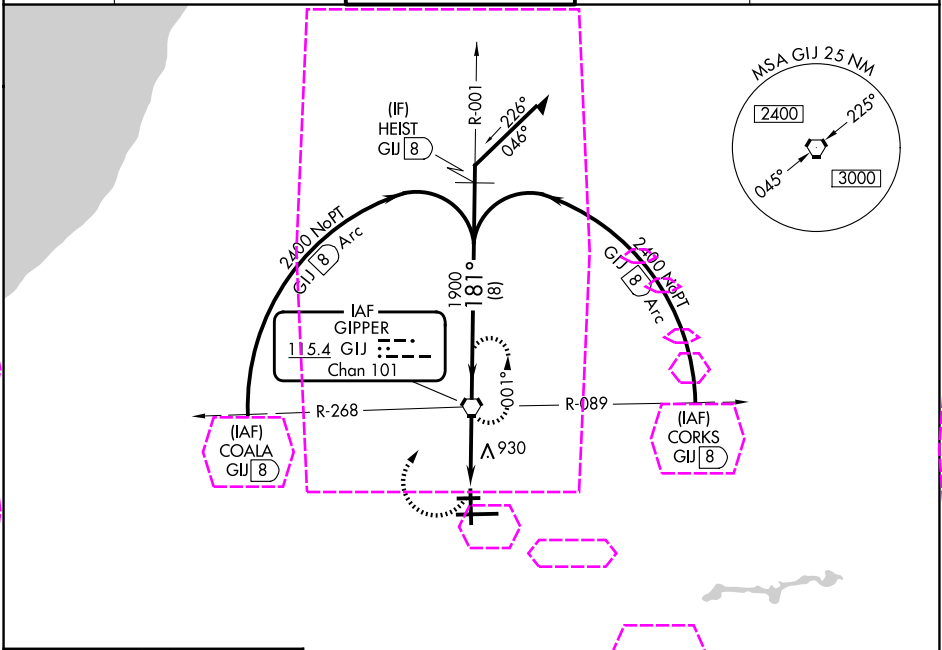
VOR RWY 18
SOUTH BEND INTL (SBN)



Circling Rwy 27R NA at night.

MISSED APPROACH: Climbing right turn to 2400 direct GIJ VORTAC and hold.

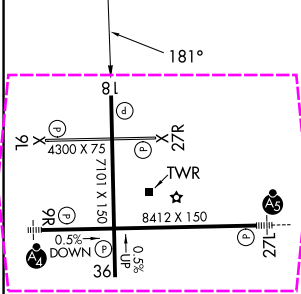
ATIS 120.675	SOUTH BEND APP CON ★ 118.55 257.8	SOUTH BEND TOWER ★ 135.675 (CTAF) 0 257.8	GND CON 121.7	CLNC DEL 121.9
-----------------	--------------------------------------	--	------------------	-------------------



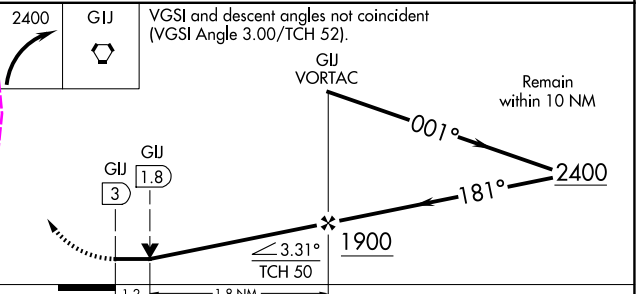
EC-2, 07 AUG 2025 to 04 SEP 2025

EC-2, 07 AUG 2025 to 04 SEP 2025

ELEV 798	D	TDZE 798
----------	---	----------



HIRL Rwy 9R-27L	1
MIRL Rwy 18-36	1
MIRL Rwy 9L-27R	1
FAF to MAP 3 NM	
Knots	60 90 120 150 180
Min:Sec	3:00 2:00 1:30 1:12 1:00



CATEGORY	A	B	C	D
S-18	1260-1 462 (500-1)	1260-1 462 (500-1)	1260-1 462 (500-1)	1260-1 462 (500-1)
CIRCLING	1280-1 482 (500-1)	1280-1 482 (500-1)	1280-1 482 (500-1)	1280-1 482 (500-1)

SOUTH BEND, INDIANA
Amdt 7F 07SEP23

41°42'N-86°19'W

SOUTH BEND INTL (SBN)
VOR RWY 18