

RNAV (GPS) RWY 9R
SOUTH BEND INTL (SBN)

SOUTH BEND INTL (SBN)

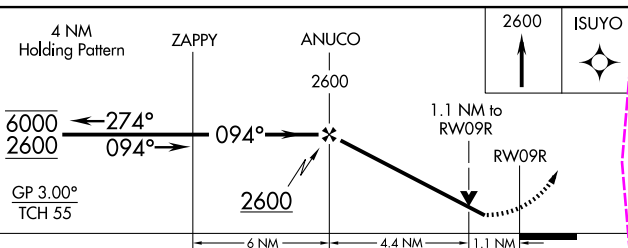
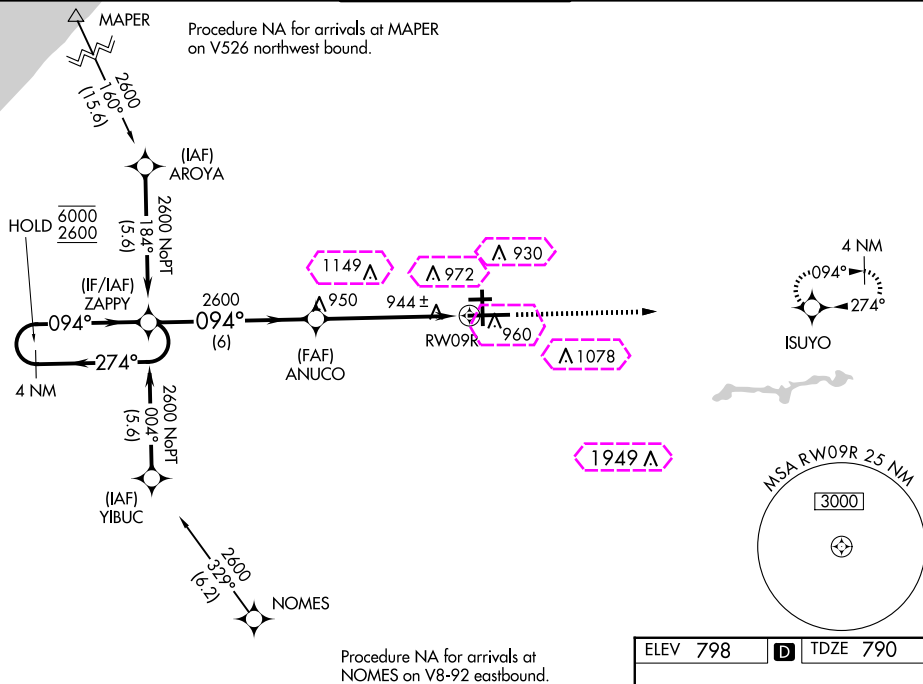
RNP APCH - GPS.


- T** For uncompensated Baro-VNAV systems, LNAV/VNAV NA below -19°C or above 54°C.
A Circling Rwy 27R NA at night. Rwy 9R helicopter visibility reduction below RVR 4000 NA.
 For inop ALS, increase LPV all Cats visibility to RVR 5500 and LNAV Cat C/D to RVR 6000.

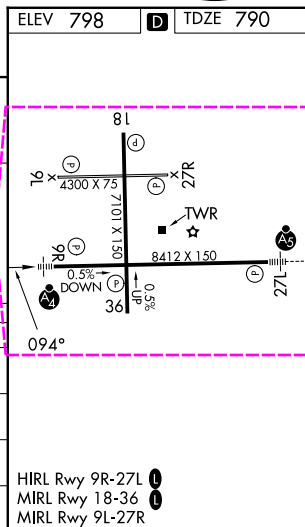


MISSED APPROACH:
Climb to 2600 direct
ISUYO and hold.

ATIS 120.675	SOUTH BEND APP CON ★ 118.55 257.8	SOUTH BEND TOWER ★ 135.675 (CTAF) 0 257.8	GND CON 121.7	CLNC DEL 121.9
-----------------	--------------------------------------	--	------------------	-------------------



CATEGORY	A	B	C	D
LPV DA	1135/40 345 (400-3/4)			
LNAV/ VNAV DA	1222/50 432 (500-1)			
LNAV MDA	1200/40 410 (500-3/4)	1200/50 410 (500-1)		
 CIRCLING	1280-1 482 (500-1)	1440-1 3/4 642 (700-1 3/4)		1500-2 1/4 702 (800-2 1/4)



SOUTH BEND, INDIANA
Amdt 1D 16MAY24

41°42'N-86°19'W

SOUTH BEND INTL (SBN)

RNAV (GPS) RWY 9R

EC-2, 10 JUL 2025 to 07 AUG 2025

EC-2, 10 JUL 2025 to 07 AUG 2025

SOUTH BEND INTL (SBN)
RNAV (GPS) RWY 9R