

SOUTH BEND, INDIANA

AL-399 (FAA)

25163

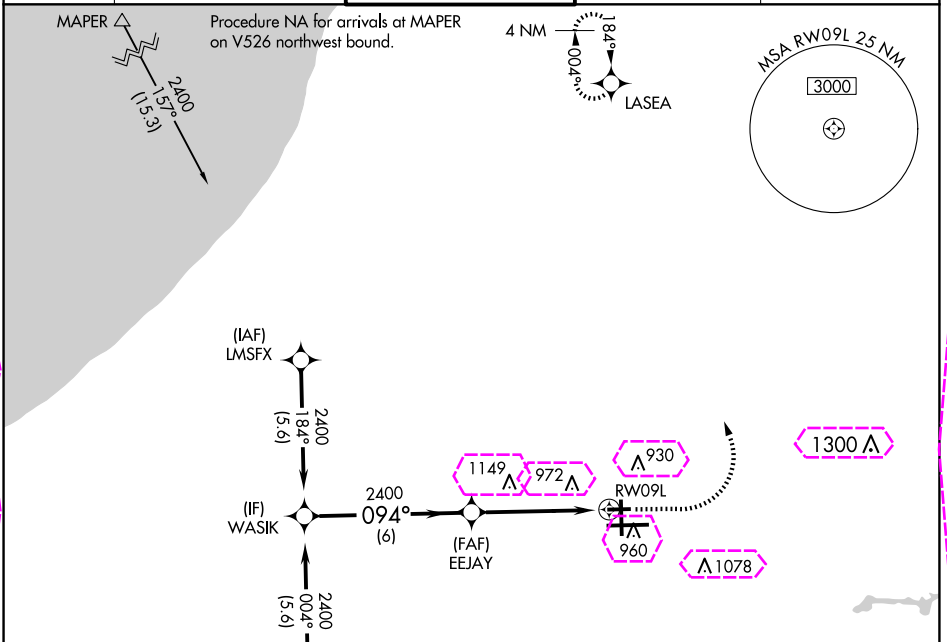
WAAS CH 70542 W09A	APP CRS 094°	Rwy Ldg TDZE 788 Apt Elev 798
--	------------------------	---

RNAV (GPS) RWY 9L

SOUTH BEND INTL (SBN)

RNP APCH - GPS.	MISSED APPROACH: Climb to 2000 then climbing left turn to 2400 direct LASEA and hold.
Rwy 9L helicopter visibility reduction below 3/4 SM NA. Circling Rwy 27R NA at night.	

ATIS 120.675	SOUTH BEND APP CON ★ 118.55 257.8	SOUTH BEND TOWER ★ 135.675 (CTAF) 0 257.8	GND CON 121.7	CLNC DEL 121.9
------------------------	---	---	-------------------------	--------------------------



ELEV 798 TDZE 788

CATEGORY	A	B	C	D
LP MDA	1240-1	452 (500-1)	1240-1 3/8	452 (500-1 3/8)
LNAY MDA	1240-1	452 (500-1)	1240-1 3/8	452 (500-1 3/8)
CIRCLING	1280-1	482 (500-1)	1440-1 3/4	1500-2 1/4
			642 (700-1 3/4)	702 (800-2 1/4)

HIRL Rwy 9R-27L

MIRL Rwy 18-36

MIRL Rwy 9L-27R

SOUTH BEND, INDIANA
Amdt 1D 07SEP23

41°42'N-86°19'W

SOUTH BEND INTL (SBN)
RNAV (GPS) RWY 9L

EC-2, 10 JUL 2025 to 07 AUG 2025

EC-2, 10 JUL 2025 to 07 AUG 2025

SOUTH BEND, INDIANA

AL-399 (FAA)

25219

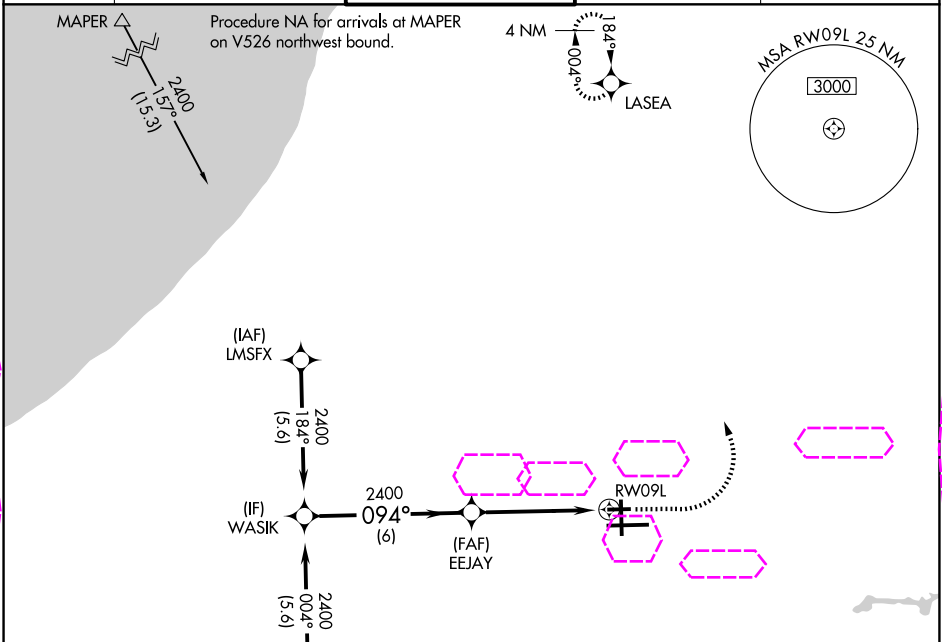
WAAS CH 70542 W09A	APP CRS 094°	Rwy Ldg TDZE 788 Apt Elev 798
--	------------------------	---

RNAV (GPS) RWY 9L

SOUTH BEND INTL (SBN)

RNP APCH - GPS.	MISSED APPROACH: Climb to 2000 then climbing left turn to 2400 direct LASEA and hold.
Rwy 9L helicopter visibility reduction below $\frac{3}{4}$ SM NA. Circling Rwy 27R NA at night.	

ATIS 120.675	SOUTH BEND APP CON ★ 118.55 257.8	SOUTH BEND TOWER ★ 135.675 (CTAF) 0 257.8	GND CON 121.7	CLNC DEL 121.9
------------------------	---	---	-------------------------	--------------------------



ELEV 798 TDZE 788

094°

81 4300 X 75 150 8412 X 150 271

0.5% DOWN 361 0.5%

TWR

VGSI and descent angles not coincident (VGSI Angle 3.00/TCH 44).

WASIK EEJAY RWY 9L

2400 094° 2400 3.00° TCH 40

6 NM 4.9 NM

CATEGORY	A	B	C	D
LP MDA	1240-1	452 (500-1)	1240-1 $\frac{3}{8}$	452 (500-1 $\frac{3}{8}$)
LNAY MDA	1240-1	452 (500-1)	1240-1 $\frac{3}{8}$	452 (500-1 $\frac{3}{8}$)
CIRCLING	1280-1	482 (500-1)	1440-1 $\frac{3}{4}$ 642 (700-1 $\frac{3}{4}$)	1500-2 $\frac{1}{4}$ 702 (800-2 $\frac{1}{4}$)

HIRL Rwy 9R-27L
MIRL Rwy 18-36
MIRL Rwy 9L-27R

EC-2, 07 AUG 2025 to 04 SEP 2025

EC-2, 07 AUG 2025 to 04 SEP 2025

SOUTH BEND, INDIANA
Amdt 1D 07SEP23

41°42'N-86°19'W

SOUTH BEND INTL (SBN)
RNAV (GPS) RWY 9L