

SOUTH BEND, INDIANA

AL-399 (FAA)

25163

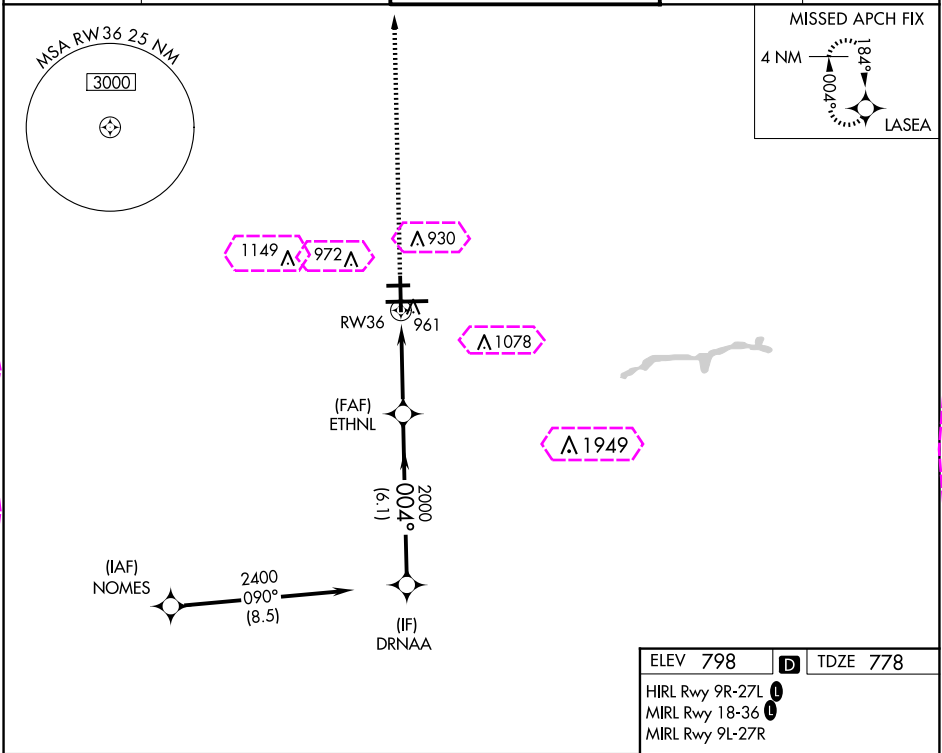
WAAS CH 69514 W36A	APP CRS 004°	Rwy Ldg 7101 TDZE 778 Apt Elev 798
--	------------------------	---

RNAV (GPS) RWY 36

SOUTH BEND INTL (SBN)

RNP APCH - GPS.	MISSED APPROACH: Climb to 2400 direct LASEA and hold.
<div><div>▼</div><div>Circling Rwy 27R NA at night. Rwy 36 helicopter visibility reduction below ¾ SM NA.</div><div>▲</div><div>For uncompensated Baro-VNAV systems, LNAV/VNAV NA below -22°C or above 54°C.</div></div>	

ATIS 120.675	SOUTH BEND APP CON★ 118.55 257.8	SOUTH BEND TOWER★ 135.675 (CTAF) 0 257.8	GND CON 121.7	CLNC DEL 121.9
------------------------	--	--	-------------------------	--------------------------



SOUTH BEND, INDIANA

AL-399 (FAA)

25219

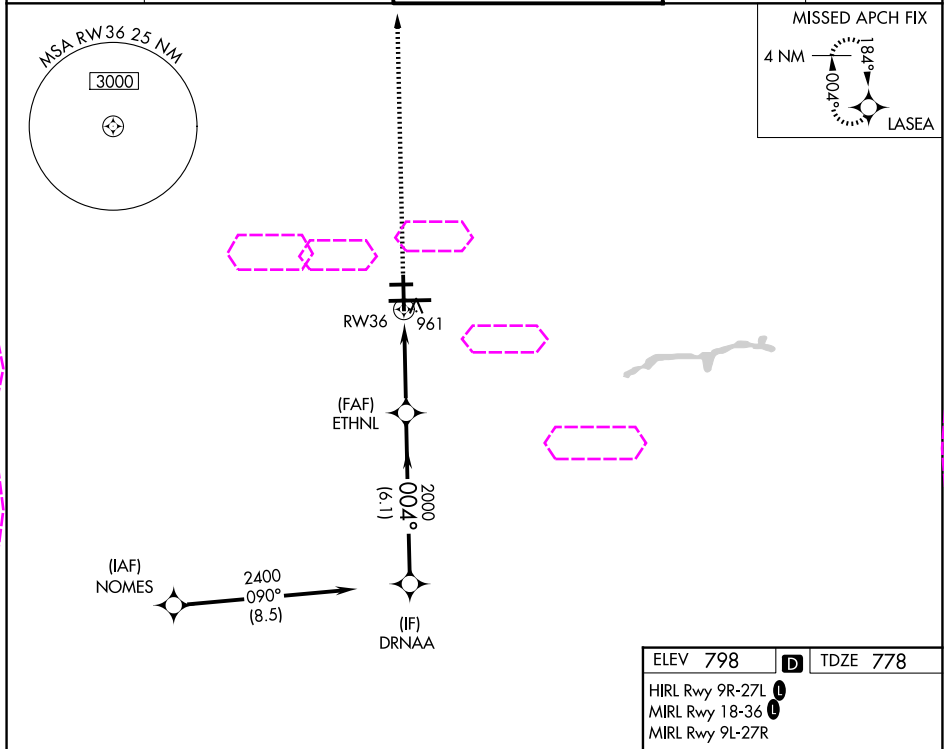
WAAS CH 69514 W36A	APP CRS 004°	Rwy Ldg 7101 TDZE 778 Apt Elev 798
--	------------------------	---

RNAV (GPS) RWY 36

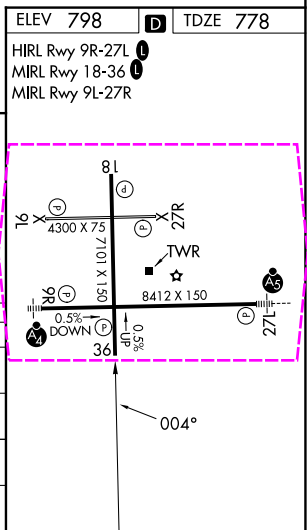
SOUTH BEND INTL (SBN)

RNP APCH - GPS.	MISSED APPROACH: Climb to 2400 direct LASEA and hold.
⚠ Circling Rwy 27R NA at night. Rwy 36 helicopter visibility reduction below $\frac{3}{4}$ SM NA. ⚠ For uncompensated Baro-VNAV systems, LNAV/VNAV NA below -22°C or above 54°C.	

ATIS 120.675	SOUTH BEND APP CON★ 118.55 257.8	SOUTH BEND TOWER★ 135.675 (CTAF) 0 257.8	GND CON 121.7	CLNC DEL 121.9
------------------------	--	--	-------------------------	--------------------------



2400	LASEA	ETHNL	DRNAA	2400
1.5 NM	1.5 NM to RWY 36	2.2 NM	6.1 NM	GP 3.00° TCH 50
CATEGORY	A	B	C	D
LPV DA	1051-7 $\frac{7}{8}$ 273 (300-7 $\frac{7}{8}$)			
LNAV/DA	1230-1 $\frac{3}{8}$ 452 (500-1 $\frac{3}{8}$)			
LNAV MDA	1280-1	502 (500-1)	1280-1 $\frac{3}{8}$	502 (500-1 $\frac{3}{8}$)
CIRCLING	1280-1	482 (500-1)	1440-1 $\frac{3}{4}$ 642 (700-1 $\frac{3}{4}$)	1520-2 $\frac{1}{4}$ 722 (800-2 $\frac{1}{4}$)



SOUTH BEND, INDIANA
Amdt 1E 12JUN25

41°42'N-86°19'W

RNAV (GPS) RWY 36

EC-2, 07 AUG 2025 to 04 SEP 2025

EC-2, 07 AUG 2025 to 04 SEP 2025