

WAAS CH <b>86542</b> <b>W27B</b>	APP CRS <b>274°</b>	Rwy Ldg <b>4300</b> TDZE <b>788</b> Apt Elev <b>798</b>
--	------------------------	---

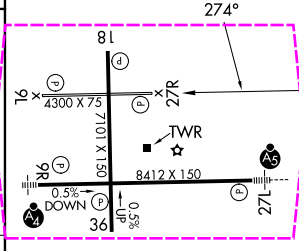
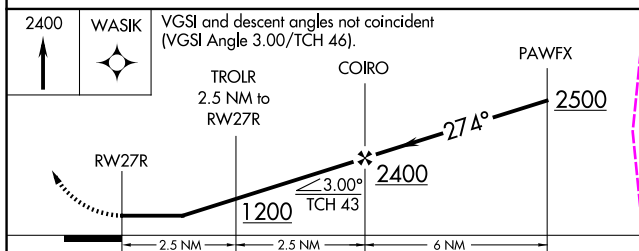
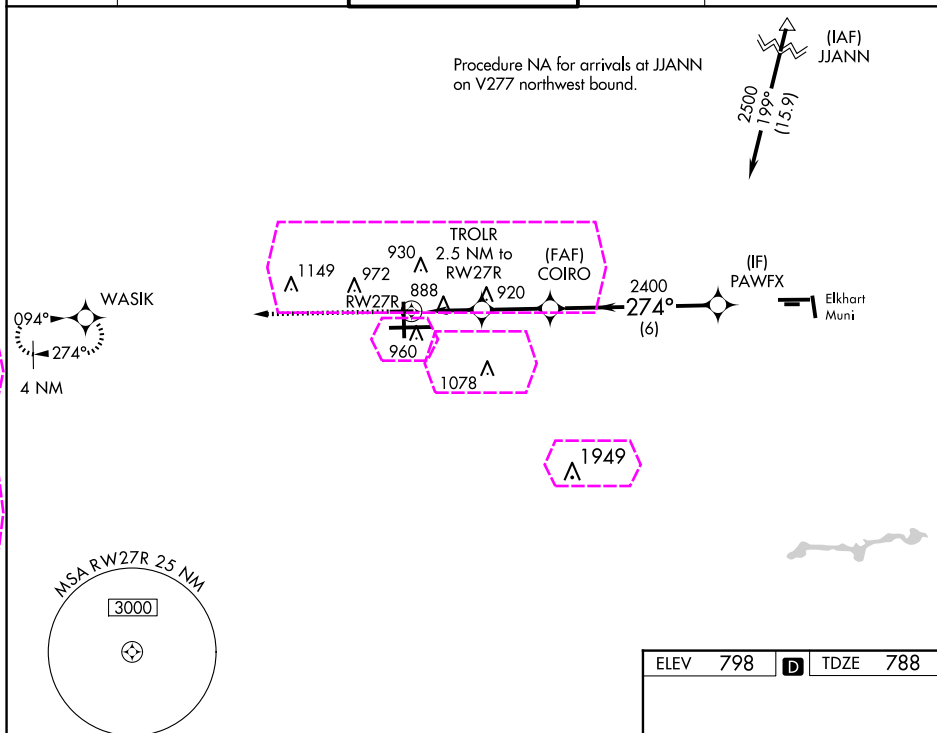
RNAV (GPS) RWY 27R  
SOUTH BEND INTL (SBN)

RNP APCH - GPS.

**T** Rwy 27R helicopter visibility reduction below 1 SM NA.  
**A** Procedure NA at night.

**MISSED APPROACH:** Climb to 2400 direct WASIK and hold.

ATIS 120.675	SOUTH BEND APP CON★ 118.55 257.8	SOUTH BEND TOWER★ 135.675 (CTAF) 0 257.8	GND CON 121.7	CLNC DEL 121.9
-----------------	-------------------------------------	---	------------------	-------------------



CATEGORY	A	B	C	D
LP MDA	1140-1 352 (400-1)			
LNAV MDA	1180-1 392 (400-1)	1180-1½ 392 (400-1½)		
<b>C</b> CIRCLING	1280-1 482 (500-1)	1440-1¾ 642 (700-1¾)	1520-2¼ 722 (800-2¼)	

HIRL Rwy 9R-27L **L**  
MIRL Rwy 18-36 **L**  
MIRL Rwy 9L-27R

EC-2, 10 JUL 2025 to 07 AUG 2025

EC-2, 10 JUL 2025 to 07 AUG 2025

SOUTH BEND, INDIANA

AL-399 (FAA)

25219

WAAS CH <b>86542</b> <b>W27B</b>	APP CRS <b>274°</b>	Rwy Ldg TDZE <b>788</b> Apt Elev <b>798</b>
--	------------------------	---

# RNAV (GPS) RWY 27R

SOUTH BEND INTL (SBN)

RNP APCH - GPS.

▼ Rwy 27R helicopter visibility reduction below 1 SM NA.  
▲ Procedure NA at night.

MISSED APPROACH: Climb to 2400 direct WASIK and hold.

ATIS <b>120.675</b>	SOUTH BEND APP CON ★ <b>118.55 257.8</b>	SOUTH BEND TOWER ★ <b>135.675 (CTAF) 0 257.8</b>	GND CON <b>121.7</b>	CLNC DEL <b>121.9</b>
------------------------	---	---	-------------------------	--------------------------

