

SOUTH BEND, INDIANA

AL-399 (FAA)

25163

WAAS CH 50108 W27A	APP CRS 274°	Rwy Ldg 8412 TDZE 774 Apt Elev 798
--	------------------------	---

RNAV (GPS) RWY 27L

SOUTH BEND INTL (SBN)

RNP APCH - GPS

▼

▲

For uncompensated Baro-VNAV systems, LNAV/VNAV NA below -19°C or above 54°C. Circling to Rwy 27R NA at night. For inop ALS, increase LNAV Cat C/D visibility to 1½ SM.

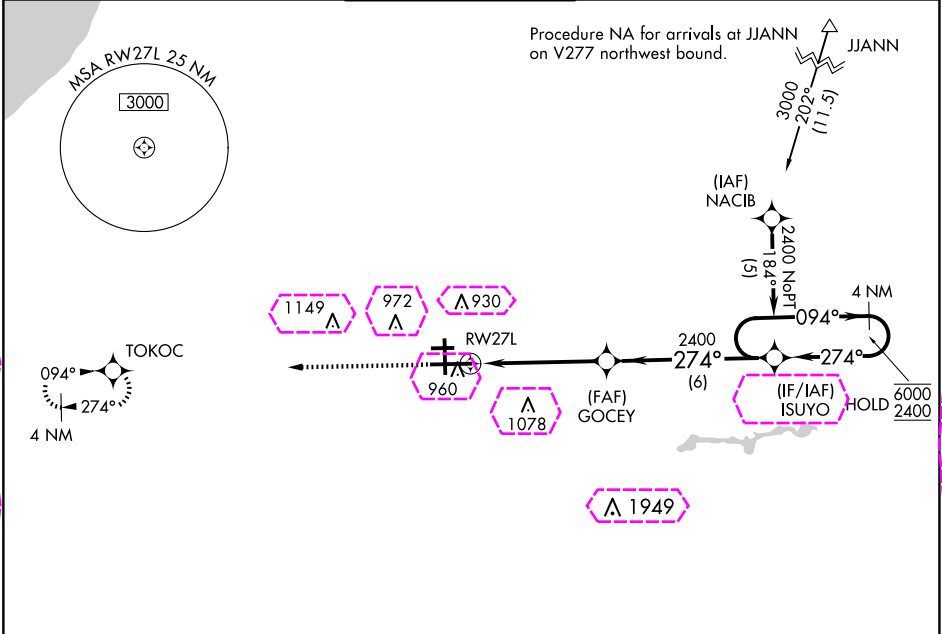
MALSR

▲

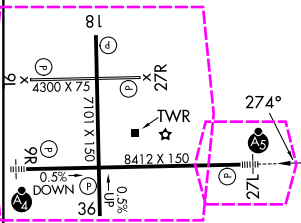
AS

MISSED APPROACH: Climb to 2600 direct TOKOC and hold.

ATIS 120.675	SOUTH BEND APP CON ★ 118.55 257.8	SOUTH BEND TOWER ★ 135.675 (CTAF) 0 257.8	GND CON 121.7	CLNC DEL 121.9
------------------------	---	---	-------------------------	--------------------------



ELEV 798	D	TDZE 774
----------	---	----------



- HIRL Rwy 9R-27L
- MIRL Rwy 18-36
- MIRL Rwy 9L-27R

	2600	TOKOC			
			GOCEY	ISUYO	4 NM Holding Pattern
			2400		
			1.4 NM to RW27L	274°	094° 6000
				2400	274° 2400
					GP 3.00° TCH 53
			1.4 NM	3.5 NM	6 NM
CATEGORY	A	B	C	D	
LPV DA		1030/24	256 (300-½)		
LNAV/VNAV DA		1160/40	386 (400-¾)		
LNAV MDA	1260/24	486 (500-½)	1260/50	486 (500-1)	
CIRCLING	1280-1	482 (500-1)	1440-1¾ 642 (700-1¾)	1520-2¼ 722 (800-2¼)	

SOUTH BEND, INDIANA
Orig-E 12JUN25

41°42'N-86°19'W

SOUTH BEND INTL (SBN)
RNAV (GPS) RWY 27L

EC-2, 10 JUL 2025 to 07 AUG 2025

EC-2, 10 JUL 2025 to 07 AUG 2025

SOUTH BEND, INDIANA

AL-399 (FAA)

25219

WAAS CH 50108 W27A	APP CRS 274°	Rwy Ldg 8412 TDZE 774 Apt Elev 798
--	------------------------	---

RNAV (GPS) RWY 27L
SOUTH BEND INTL (SBN)

RNP APCH - GPS

▼

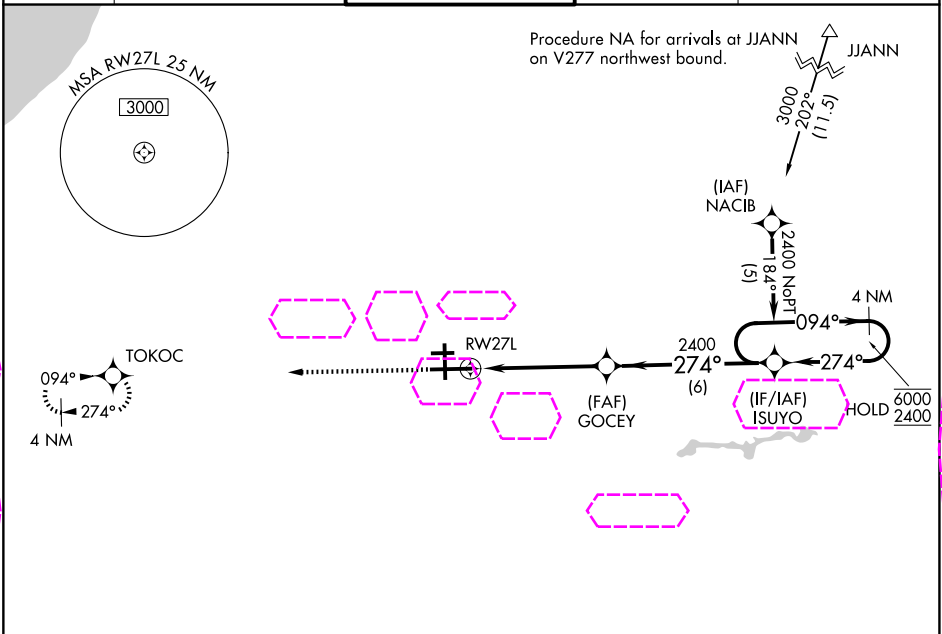
▲

For uncompensated Baro-VNAV systems, LNAV/VNAV NA below -19°C or above 54°C. Circling to Rwy 27R NA at night. For inop ALS, increase LNAV Cat C/D visibility to 1½ SM.

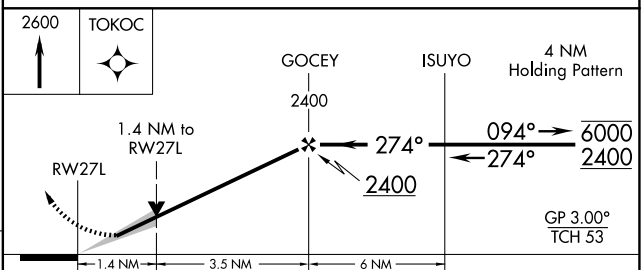
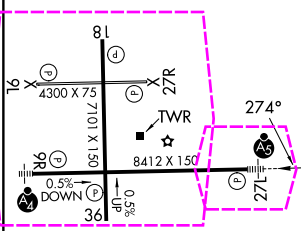
MALSR

MISSED APPROACH: Climb to 2600 direct TOKOC and hold.

ATIS 120.675	SOUTH BEND APP CON ★ 118.55 257.8	SOUTH BEND TOWER ★ 135.675 (CTAF) 0 257.8	GND CON 121.7	CLNC DEL 121.9
------------------------	---	---	-------------------------	--------------------------



ELEV 798	D	TDZE 774
----------	---	----------



CATEGORY	A	B	C	D
LPV DA		1030/24	256 (300-½)	
LNAV/VNAV DA		1160/40	386 (400-¾)	
LNAV MDA	1260/24	486 (500-½)	1260/50	486 (500-1)
CIRCLING	1280-1	482 (500-1)	1440-1¾ 642 (700-1¾)	1520-2¼ 722 (800-2¼)

SOUTH BEND, INDIANA
Orig-E 12JUN25

41°42'N-86°19'W

SOUTH BEND INTL (SBN)
RNAV (GPS) RWY 27L

EC-2, 07 AUG 2025 to 04 SEP 2025

EC-2, 07 AUG 2025 to 04 SEP 2025