

SOUTH BEND, INDIANA

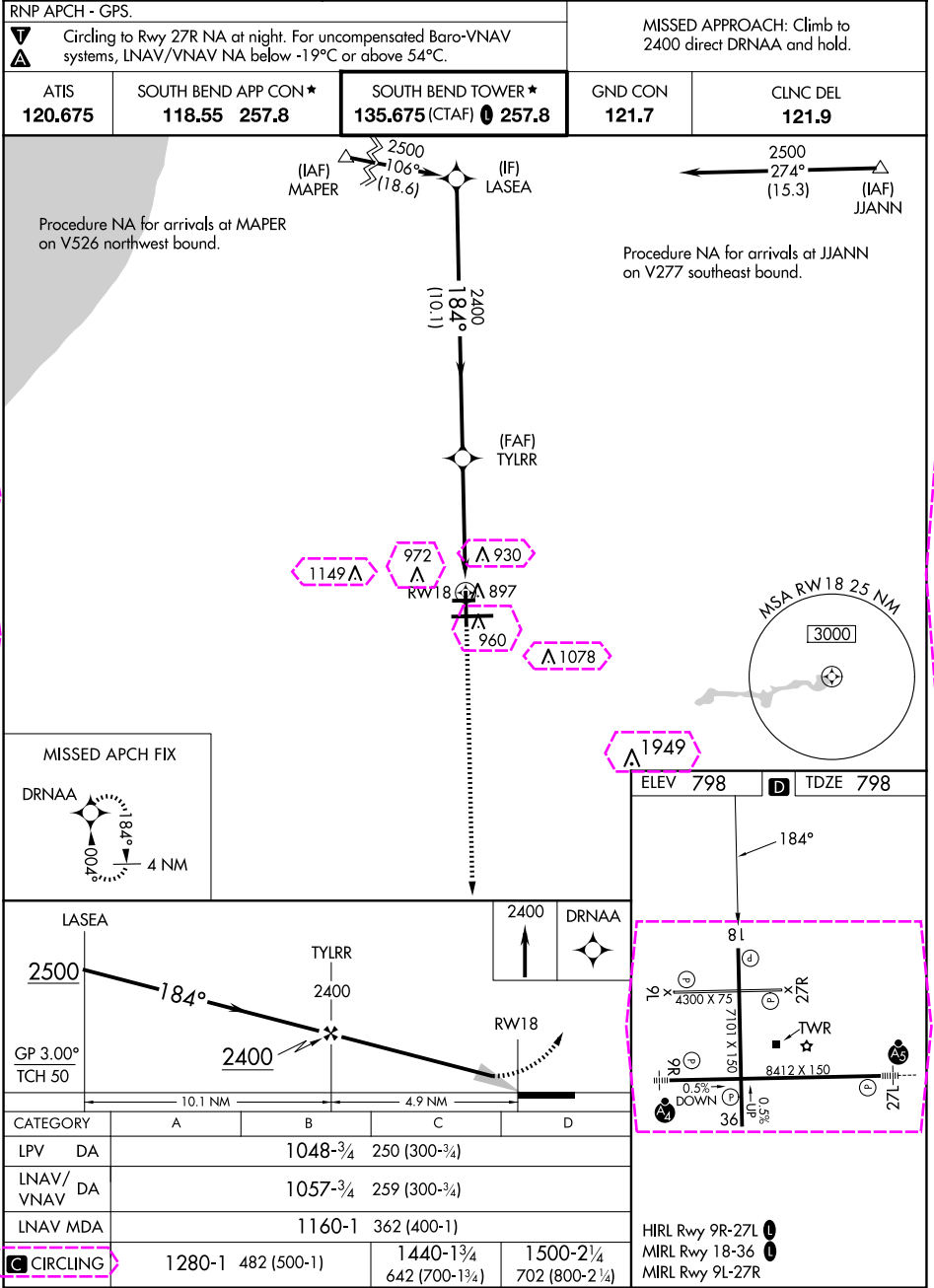
AL-399 (FAA)

25163

WAAS CH 73021 W18A	APP CRS 184°	Rwy Ldg TDZE 798 Apt Elev 798
--	------------------------	---

RNAV (GPS) RWY 18

SOUTH BEND INTL (SBN)



EC-2, 10 JUL 2025 to 07 AUG 2025

EC-2, 10 JUL 2025 to 07 AUG 2025

SOUTH BEND, INDIANA
Amdt 1E 28DEC23

41°42'N-86°19'W

RNAV (GPS) RWY 18

SOUTH BEND INTL (SBN)

SOUTH BEND, INDIANA

AL-399 (FAA)

25219

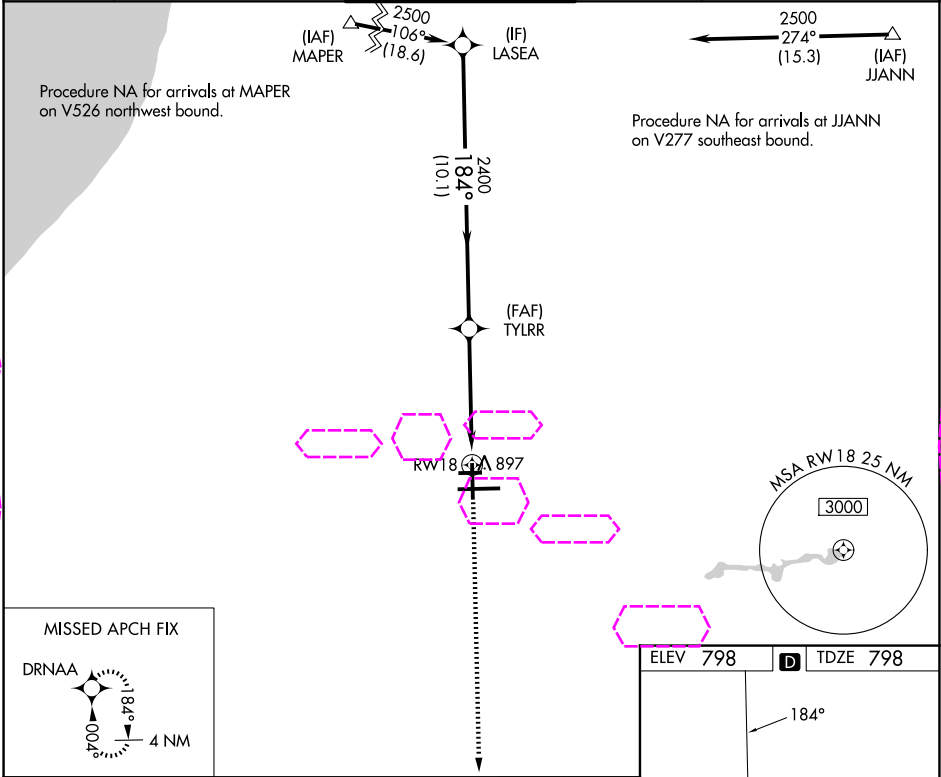
WAAS CH 73021 W18A	APP CRS 184°	Rwy Ldg TDZE 798 Apt Elev 798
--	------------------------	---

RNAV (GPS) RWY 18

SOUTH BEND INTL (SBN)

RNP APCH - GPS.		MISSED APPROACH: Climb to 2400 direct DRNAA and hold.	
▼ Circling to Rwy 27R NA at night. For uncompensated Baro-VNAV systems, LNAV/VNAV NA below -19°C or above 54°C.			

ATIS 120.675	SOUTH BEND APP CON ★ 118.55 257.8	SOUTH BEND TOWER ★ 135.675 (CTAF) 0 257.8	GND CON 121.7	CLNC DEL 121.9
------------------------	---	---	-------------------------	--------------------------



LASEA		TYLRR		RW18	
2500		2400		2400	
GP 3.00°		184°		184°	
TCH 50		10.1 NM		4.9 NM	
CATEGORY	A	B	C	D	
LPV DA		1048-3/4	250 (300-3/4)		
LNAV/ VNAV DA		1057-3/4	259 (300-3/4)		
LNAV MDA		1160-1	362 (400-1)		
CIRCLING	1280-1	482 (500-1)	1440-1 3/4 642 (700-1 3/4)	1500-2 1/4 702 (800-2 1/4)	

ELEV 798 D TDZE 798

184°

81
4300 X 75
701 X 150
8412 X 150
27L
27R
TWR
0.5% DOWN
36
0.5% UP

HIRL Rwy 9R-27L 0

MIRL Rwy 18-36 0

MIRL Rwy 9L-27R

SOUTH BEND, INDIANA
Amdt 1E 28DEC23

41°42'N-86°19'W

RNAV (GPS) RWY 18

SOUTH BEND INTL (SBN)

EC-2, 07 AUG 2025 to 04 SEP 2025

EC-2, 07 AUG 2025 to 04 SEP 2025