

SOUTH BEND, INDIANA

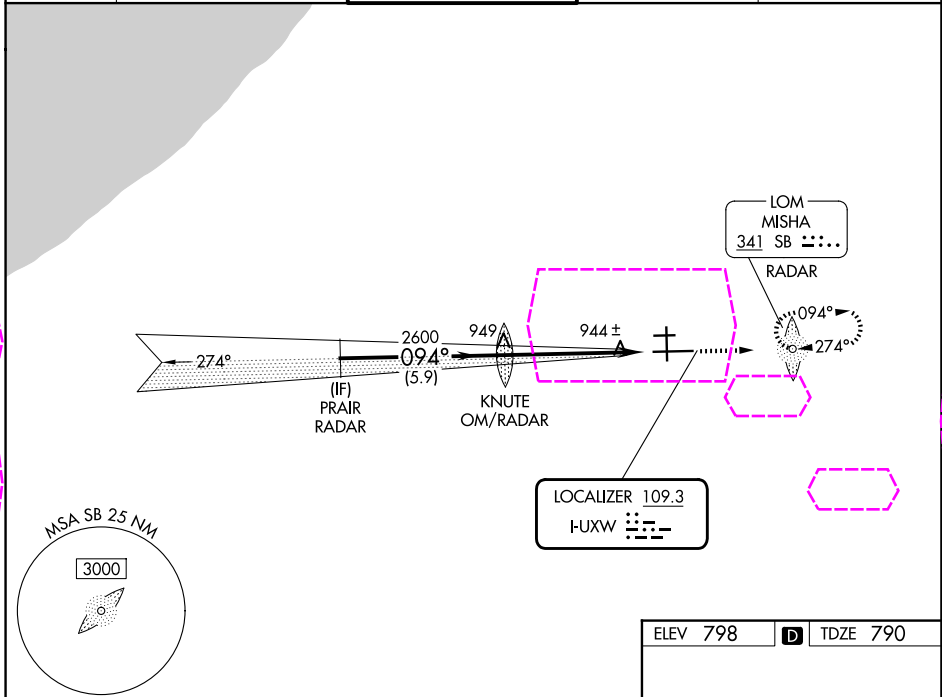
AL-399 (FAA)

25219

LOC I-UXW 109.3	APP CRS 094°	Rwy Ldg TDZE 790 Apt Elev 798
---------------------------	------------------------	---

ILS or LOC RWY 9R
SOUTH BEND INTL (SBN)

ADF and RADAR required.		MALSF	MISSED APPROACH: Climb to 3000 direct MISHA LOM/RADAR and hold, continue climb-in-hold to 3000.	
▼ Rwy 9R helicopter visibility reduction below RVR 4000 NA. For inop ALS, increase S-ILS 9R visibility all Cats to RVR 5500, increase S-LOC 9R Cats C/D visibility to RVR 6000. Circling Rwy 27R NA at night.				
ATIS 120.675	SOUTH BEND APP CON ★ 118.55 257.8	SOUTH BEND TOWER ★ 135.675 (CTAF) 0 257.8	GND CON 121.7	CLNC DEL 121.9



PRAIR RADAR		KNUTE OM/RADAR	3000	SB
2600		2600		
GS 3.00°				
TCH 55				
5.9 NM		5.3 NM		
CATEGORY	A	B	C	D
S-ILS 9R	1135/40		345 (400-¾)	
S-LOC 9R	1200/40	410 (500-¾)	1200/50	410 (500-1)
CIRCLING	1280-1	482 (500-1)	1440-1¾ 642 (700-1¾)	1520-2¼ 722 (800-2¼)
HIRL Rwy 9R-27L 1 MIRL Rwy 18-36 1 MIRL Rwy 9L-27R				
FAF to MAP 5.3 NM				
Knots	60	90	120	150
Min:Sec	5:18	3:32	2:39	2:07
				1:46

SOUTH BEND, INDIANA
Amdt 11 12JUN25

41°42'N-86°19'W

SOUTH BEND INTL (SBN)
ILS or LOC RWY 9R

EC-2, 07 AUG 2025 to 04 SEP 2025

EC-2, 07 AUG 2025 to 04 SEP 2025