

SOUTH BEND, INDIANA

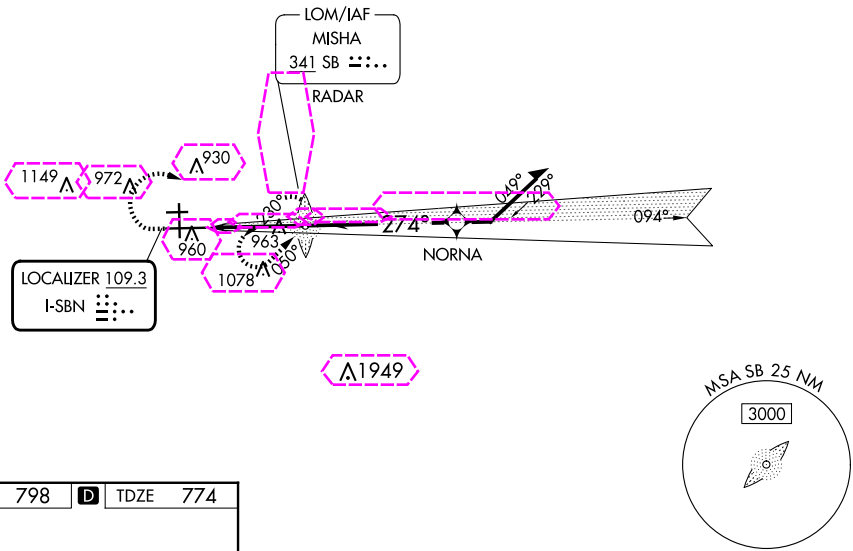
AL-399 (FAA)

25163

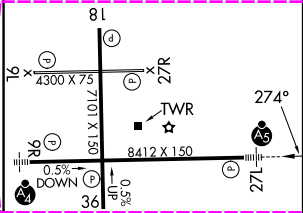
LOC I-SBN	APP CRS	Rwy Ldg	8412
109.3	274°	TDZE	774
		Apt Elev	798

ILS or LOC RWY 27L
SOUTH BEND INTL (SBN)

ADF and RADAR required.		<div>MALSR</div> <div>AS</div>	MISSED APPROACH: Climb to 1500 then climbing right turn to 3000 direct MISHA LOM/RADAR and hold, continue climb-in-hold to 3000.	
<div><div><div>▼</div><div>▲</div></div><div>Circling Rwy 27R NA at night. * RVR 1800 authorized with use of FD or AP or HUD to DA.</div></div>				
ATIS 120.675	SOUTH BEND APP CON ★ 118.55 257.8	SOUTH BEND TOWER ★ 135.675 (CTAF) <div>0</div> 257.8		GND CON 121.7
				CLNC DEL 121.9



ELEV	798	D	TDZE	774
------	-----	---	------	-----



HIRL Rwy 9R-27L					
MIRL Rwy 18-36					
MIRL Rwy 9L-27R					
FAF to MAP 3.6 NM					
Knots	60	90	120	150	180
Min:Sec	3:36	2:24	1:48	1:26	1:12

1500 3000 SB		MISHA LOM/RADAR		Remain within 10 NM	
6000		2000		094°	
2400		2000		274°	
3.6 NM		GS 3.00°		TCH 53	
CATEGORY	A	B	C	D	
S-ILS 27L *	974/24 200 (200-½)				
S-LOC 27L	1220/24 446 (500-½)		1220/45 446 (500-¾)		
CIRCLING	1280-1 482 (500-1)		1440-1¾ 1520-2¼ 642 (700-1¾) 722 (800-2¼)		

SOUTH BEND, INDIANA
Amdt 37 12JUN25

41°42'N-86°19'W

SOUTH BEND INTL (SBN)
ILS or LOC RWY 27L

EC-2, 10 JUL 2025 to 07 AUG 2025

EC-2, 10 JUL 2025 to 07 AUG 2025

SOUTH BEND, INDIANA

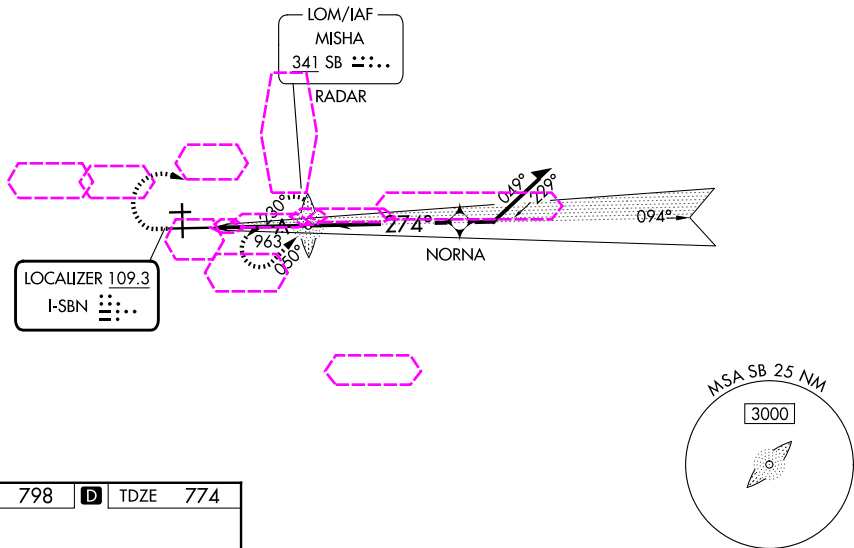
AL-399 (FAA)

25219

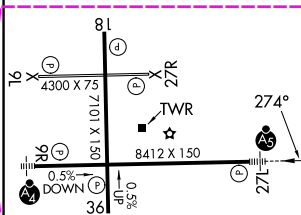
LOC I-SBN	APP CRS	Rwy Ldg	8412
109.3	274°	TDZE	774
		Apt Elev	798

ILS or LOC RWY 27L
SOUTH BEND INTL (SBN)

ADF and RADAR required.		MALSR AS	MISSED APPROACH: Climb to 1500 then climbing right turn to 3000 direct MISHA LOM/RADAR and hold, continue climb-in-hold to 3000.	
▼ Circling Rwy 27R NA at night. ▲ * RVR 1800 authorized with use of FD or AP or HUD to DA.				
ATIS 120.675	SOUTH BEND APP CON ★ 118.55 257.8	SOUTH BEND TOWER ★ 135.675 (CTAF) 257.8		GND CON 121.7
				CLNC DEL 121.9



ELEV	798	D	TDZE	774
------	-----	---	------	-----



HIRL Rwy 9R-27L					
MIRL Rwy 18-36					
MIRL Rwy 9L-27R					
FAF to MAP 3.6 NM					
Knots	60	90	120	150	180
Min:Sec	3:36	2:24	1:48	1:26	1:12

1500 3000 SB		MISHA LOM/RADAR		Remain within 10 NM	
6000		2000		2400	
094°		274°		GS 3.00°	
2000		2000		TCH 53	
3.6 NM		CATEGORY		A B C D	
S-ILS 27L *		974/24		200 (200-½)	
S-LOC 27L		1220/24 446 (500-½)		1220/45 446 (500-¾)	
CIRCLING		1280-1 482 (500-1)		1440-1¾ 642 (700-1¾)	
				1520-2¼ 722 (800-2¼)	

SOUTH BEND, INDIANA
Amdt 37 12JUN25

41°42'N-86°19'W

SOUTH BEND INTL (SBN)
ILS or LOC RWY 27L

EC-2, 07 AUG 2025 to 04 SEP 2025

EC-2, 07 AUG 2025 to 04 SEP 2025