

SOUTH BEND, INDIANA

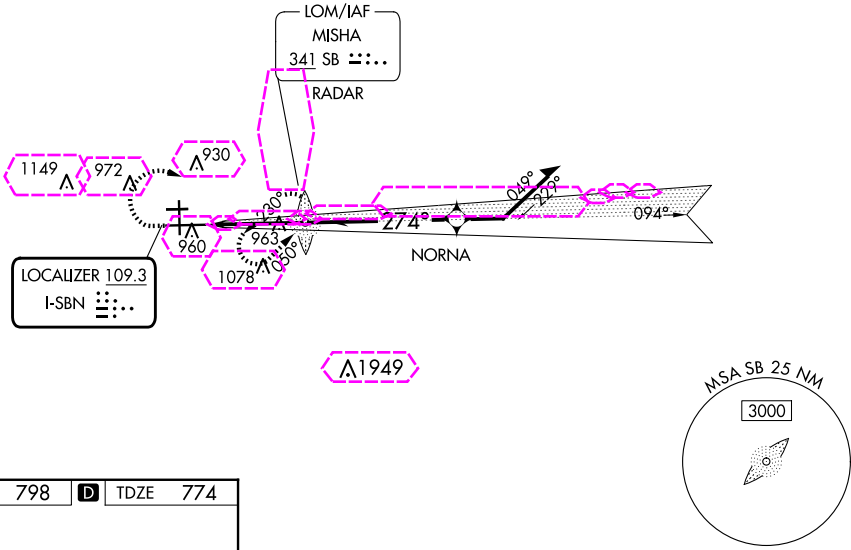
AL-399 (FAA)

25163

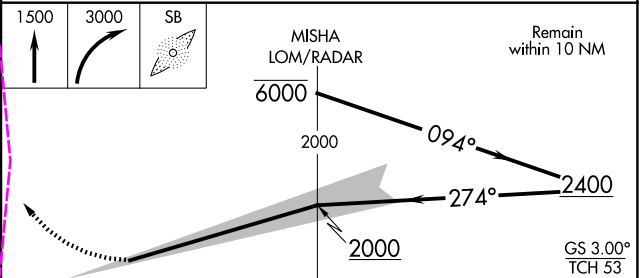
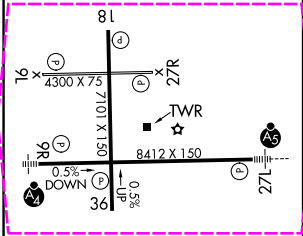
LOC I-SBN	APP CRS	Rwy Ldg	8412
109.3	274°	TDZE	774
		Apt Elev	798

ILS RWY 27L (SA CAT I & II)
SOUTH BEND INTL (SBN)

ADF and RADAR required.		MALSR	MISSED APPROACH: Climb to 1500 then climbing right turn to 3000 direct MISHA LOM/RADAR and hold, continue climb-in-hold to 3000.	
▼ Procedure NA when tower closed. Requires specific OPSPEC, MSPEC, or LOA approval.		AG		
ATIS	SOUTH BEND APP CON ★	SOUTH BEND TOWER ★	GND CON	CLNC DEL
120.675	118.55 257.8	135.675 (CTAF) 257.8	121.7	121.9



ELEV	798	D	TDZE	774
------	-----	---	------	-----



CATEGORY	A	B	C	D
S-ILS 27L	SA CAT I	RA 209/14 150 DA 924		
S-ILS 27L	SA CAT II	RA 125/12 101 DA 875		
SA CATEGORY I & II - ILS SPECIAL AIRCREW & AIRCRAFT CERTIFICATION REQUIRED				

SOUTH BEND, INDIANA

Amdt 37 12JUN25

41°42'N-86°19'W

SOUTH BEND INTL (SBN)
ILS RWY 27L (SA CAT I & II)

EC-2, 10 JUL 2025 to 07 AUG 2025

EC-2, 10 JUL 2025 to 07 AUG 2025

SOUTH BEND, INDIANA

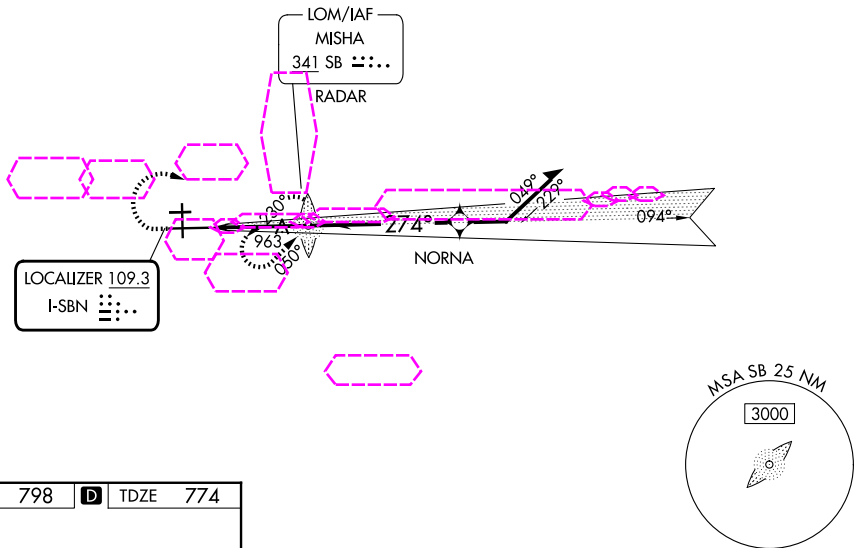
AL-399 (FAA)

25219

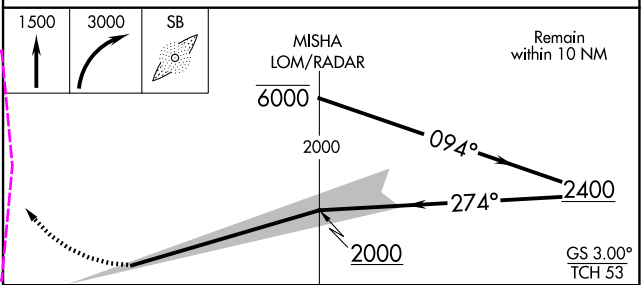
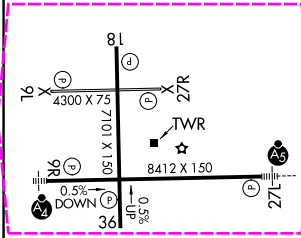
LOC I-SBN	APP CRS	Rwy Ldg	8412
109.3	274°	TDZE	774
		Apt Elev	798

ILS RWY 27L (SA CAT I & II)
SOUTH BEND INTL (SBN)

ADF and RADAR required.		MALSR	MISSED APPROACH: Climb to 1500 then climbing right turn to 3000 direct MISHA LOM/RADAR and hold, continue climb-in-hold to 3000.	
▼ Procedure NA when tower closed. Requires specific OPSPEC, MSPEC, or LOA approval.		AG		
ATIS	SOUTH BEND APP CON ★	SOUTH BEND TOWER ★	GND CON	CLNC DEL
120.675	118.55 257.8	135.675 (CTAF) 257.8	121.7	121.9



ELEV	798	D	TDZE	774
------	-----	---	------	-----



CATEGORY	A	B	C	D
S-ILS 27L	SA CAT I	RA 209/14	150 DA 924	
S-ILS 27L	SA CAT II	RA 125/12	101 DA 875	
SA CATEGORY I & II - ILS SPECIAL AIRCREW & AIRCRAFT CERTIFICATION REQUIRED				

SOUTH BEND, INDIANA
Amdt 37 12JUN25

SOUTH BEND INTL (SBN)
41°42'N-86°19'W
ILS RWY 27L (SA CAT I & II)

EC-2, 07 AUG 2025 to 04 SEP 2025

EC-2, 07 AUG 2025 to 04 SEP 2025