

SIoux FALLS, SOUTH DAKOTA

AL-396 (FAA)

25051

VORTAC FSD	APP CRS	Rwy Idg
115.0	147°	8000
Chan 97		TDZE 1429
		Apt Elev 1430

VOR or TACAN RWY 15

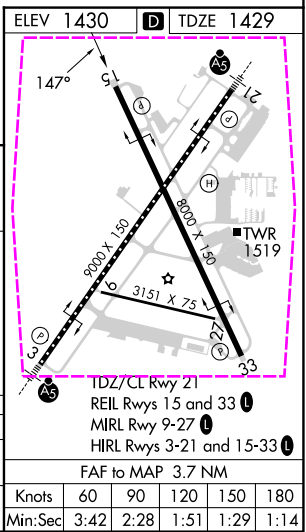
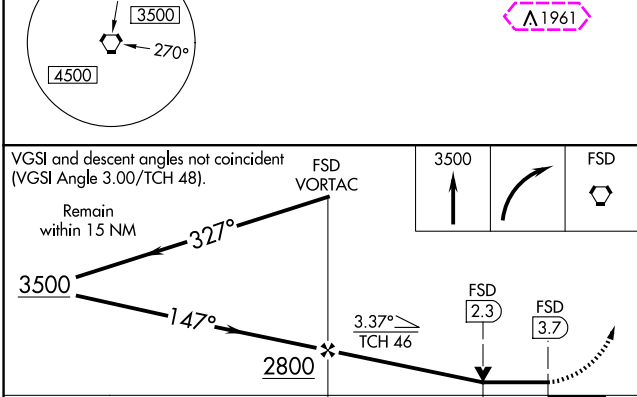
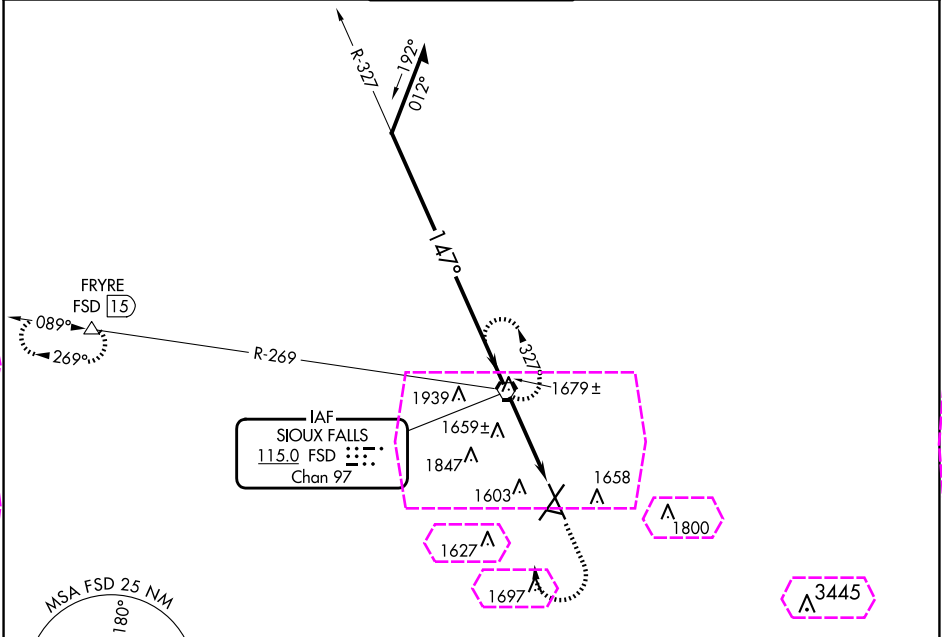
JOE FOSS FLD (FSD)

V
A
ASR

Rwy 15 helicopter visibility reduction below 3/4 SM NA.

MISSED APPROACH: Climb to 3500 then right turn direct FSD VORTAC and hold. (TACAN aircraft continue climb to 5000 via FSD R-269 to FRYRE 15 DME and hold west, right turns, 089° inbound)

ATIS 126.6	SIoux FALLS APP CON★ 125.8 284.725	SIoux FALLS TOWER★ 118.3(CTAF) 257.8	GND CON 121.9 348.6	UNICOM 122.95
---------------	---------------------------------------	---	------------------------	------------------



CATEGORY	A	B	C	D	E
S-15	1920-1	491 (500-1)	1920-1 3/8	491 (500-1 3/8)	
CIRCLING	1960-1 530 (600-1)	1980-1 550 (600-1)	2060-1 3/4 630 (700-1 3/4)	2200-2 1/2 770 (800-2 1/2)	2300-3 870 (900-3)
Knots					60 90 120 150 180
Min:Sec					3:42 2:28 1:51 1:29 1:14

SIoux FALLS, SOUTH DAKOTA
Amdt 21F 18JUN20

43°35'N-96°45'W

VOR or TACAN RWY 15

NC-1, 10 JUL 2025 to 07 AUG 2025

NC-1, 10 JUL 2025 to 07 AUG 2025

