

SIoux FALLS, SOUTH DAKOTA

AL-396 (FAA)

25051

VORTAC FSD <b>115.0</b> Chan <b>97</b>	APP CRS <b>326°</b>	Rwy Idg <b>8000</b> TDZE <b>1424</b> Apt Elev <b>1430</b>
--	------------------------	---

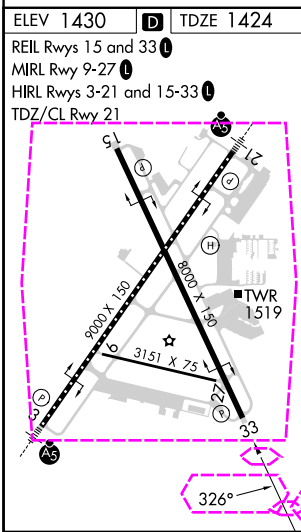
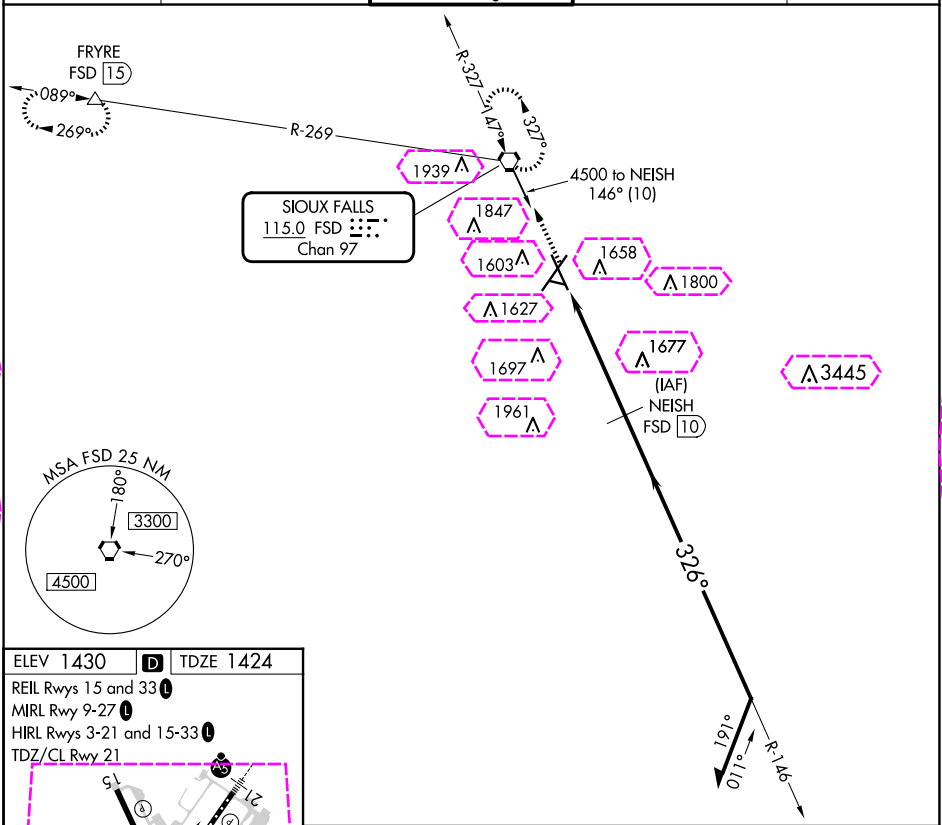
# VOR/DME or TACAN RWY 33

JOE FOSS FLD (FSD)

**ASR** **-31°C** Rwy 33 helicopter visibility reduction below ¾ SM NA.

MISSED APPROACH: Climb to 3400 direct FSD VORTAC and hold. (TACAN aircraft continue climb to 5000 via FSD R-269 to FRYRE 15 DME and hold west, right turns, 089° inbound.)

ATIS <b>126.6</b>	SIoux FALLS APP CON* <b>125.8 284.725</b>	SIoux FALLS TOWER* <b>118.3 (CTAF) 257.8</b>	GND CON <b>121.9 348.6</b>	UNICOM <b>122.95</b>
----------------------	--	---	-------------------------------	-------------------------



<div>3400</div> <div>↑</div>	<div>FSD</div> <div></div>					
		<div>NEISH</div> <div>FSD</div> <div>10</div>	<div>Remain within 15 NM</div>			
		<div>146°</div>	<div>4500</div>			
<div>FSD</div> <div>5</div>		<div>≤ 3.10°</div> <div>TCH 42</div>	<div>326°</div>		<div>3100</div>	
<div>5 NM</div>						
CATEGORY	A	B	C	D	E	
S-33	1940-1 516 (600-1)		1940-1⅜ 516 (600-1⅜)			
<div>CIRCLING</div>	1960-1 530 (600-1)	1980-1 550 (600-1)	2060-1¾ 630 (700-1¾)	2200-2½ 770 (800-2½)	2300-3 870 (900-3)	

SIoux FALLS, SOUTH DAKOTA  
Amdt 12F 18JUN20

43°35'N-96°45'W

JOE FOSS FLD (FSD)  
VOR/DME or TACAN RWY 33

NC-1, 10 JUL 2025 to 07 AUG 2025

NC-1, 10 JUL 2025 to 07 AUG 2025

SIoux FALLS, SOUTH DAKOTA

AL-396 (FAA)

25219

VORTAC FSD <b>115.0</b> Chan <b>97</b>	APP CRS <b>326°</b>	Rwy Ldg TDZE <b>1424</b> Apt Elev <b>1430</b>
--	------------------------	---

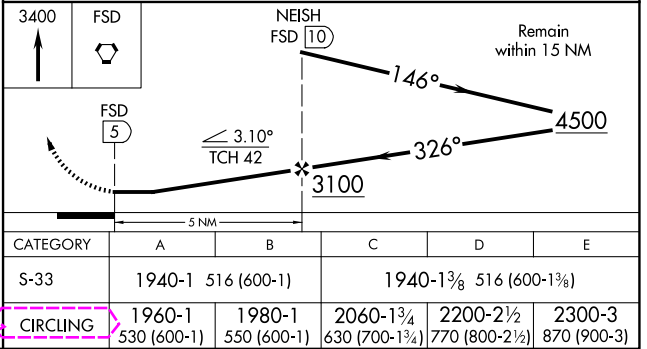
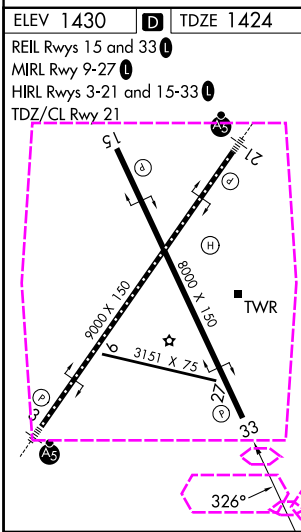
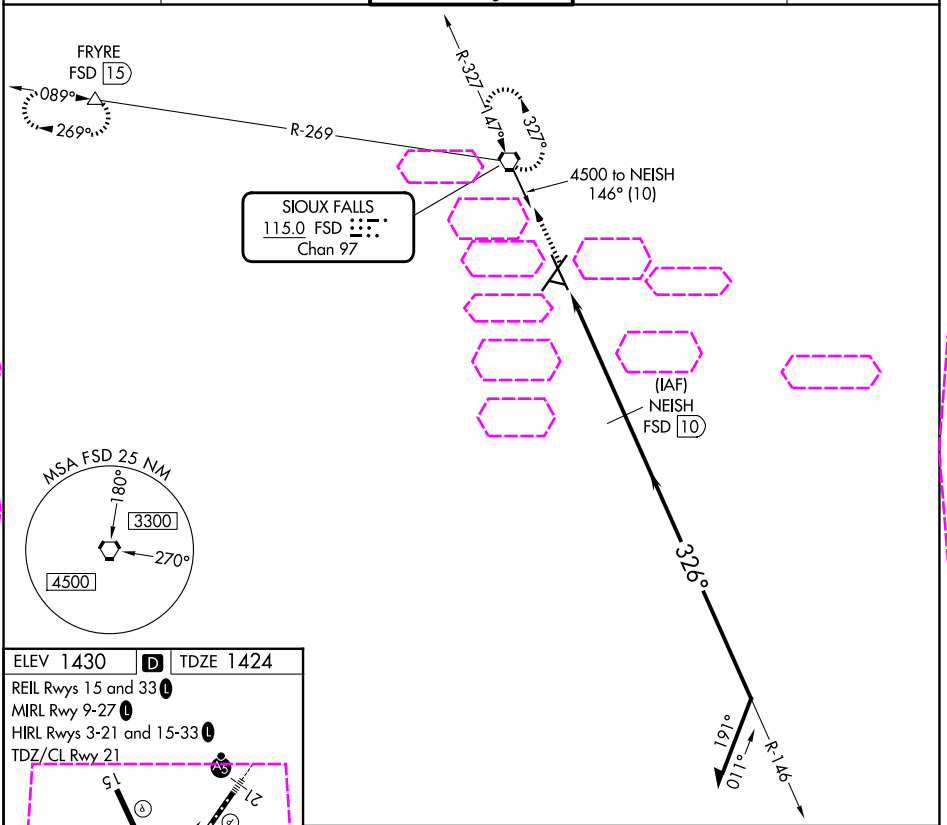
# VOR/DME or TACAN RWY 33

JOE FOSS FLD (FSD)

**ASR** **-30°C** Rwy 33 helicopter visibility reduction below  $\frac{3}{4}$  SM NA.

MISSED APPROACH: Climb to 3400 direct FSD VORTAC and hold. (TACAN aircraft continue climb to 5000 via FSD R-269 to FRYRE 15 DME and hold west, right turns, 089° inbound.)

ATIS <b>126.6</b>	SIoux FALLS APP CON* <b>125.8 284.725</b>	SIoux FALLS TOWER* <b>118.3 (CTAF) 0 257.8</b>	GND CON <b>121.9 348.6</b>	UNICOM <b>122.95</b>
----------------------	--	---	-------------------------------	-------------------------



SIoux FALLS, SOUTH DAKOTA  
Amdt 12F 18JUN20

43°35'N-96°45'W

JOE FOSS FLD (FSD)  
VOR/DME or TACAN RWY 33

NC-1, 07 AUG 2025 to 04 SEP 2025

NC-1, 07 AUG 2025 to 04 SEP 2025