

APP CRS	Rwy Idg	3151
098°	TDZE	1424
	Apt Elev	1430

RNAV (GPS) RWY 9
JOE FOSS FLD (FSD)

RNP APCH - GPS.

MISSED APPROACH: Climb to 2500 then climbing left turn to 4000 direct MOPUE and hold.

Rwy 9 helicopter visibility reduction below $\frac{3}{4}$ SM NA.

ASR
❄️ -31°C

ATIS
126.6

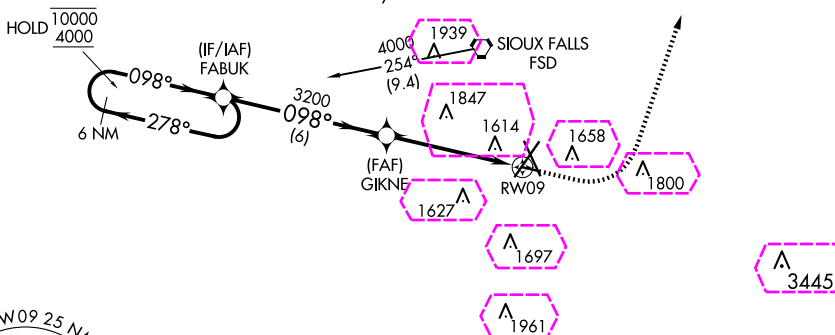
SIOUX FALLS APP CON★
 125.8 284.725

SIOUX FALLS TOWER★
 118.3 (CTAF) **L** 257.8

GND CON
121.9 348.6

UNICOM
122.95

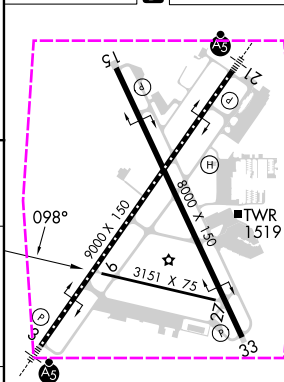
Procedure NA for arrival on FSD VORTAC
airway radials 222 CW 319.



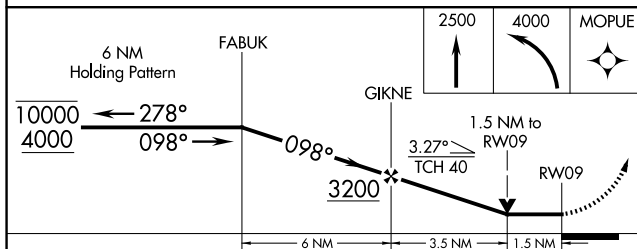
MSA RW09 25 NM

4500

ELEV 1430	D	TDZE 1424
-----------	----------	-----------



TDZ/CL Rwy 21
MIRL Rwy 9-27 **L**
REIL Rwys 15 and 33 **L**
HIRL Rwys 3-21 and 15-33 **L**



CATEGORY	A	B	C	D
LNAV MDA	2000-1	576 (600-1)	NA	
CIRCLING	2000-1	570 (600-1)	NA	

SIOUX FALLS, SOUTH DAKOTA
 Orig-G 21MAR24

43°35'N-96°45'W

JOE FOSS FLD (FSD)
RNAV (GPS) RWY 9

NC-1, 10 JUL 2025 to 07 AUG 2025

NC-1, 10 JUL 2025 to 07 AUG 2025

SIOUX FALLS, SOUTH DAKOTA

AL-396 (FAA)

25219

APP CRS 098°	Rwy Ldg 3151 TDZE 1424 Apt Elev 1430
------------------------	---

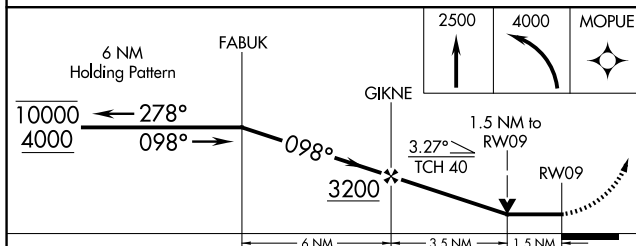
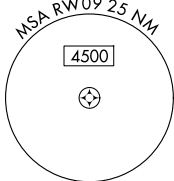
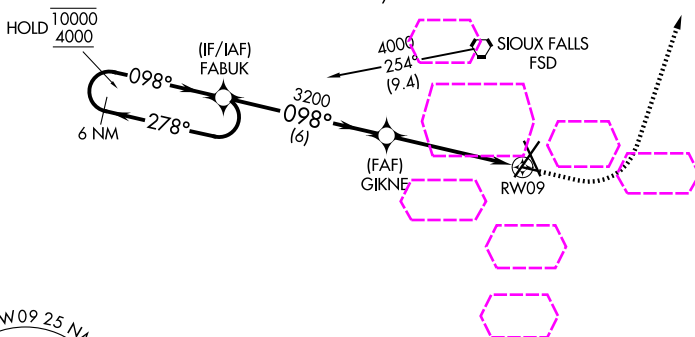
RNAV (GPS) RWY 9 JOE FOSS FLD (FSD)

RNP APCH - GPS.

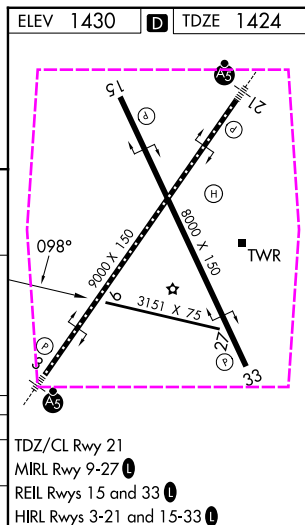
Rwy 9 helicopter visibility reduction below $\frac{3}{4}$ SM NA.

MISSED APPROACH: Climb to 2500 then climbing left turn to 4000 direct MOPUE and hold.

ATIS 126.6	SIOUX FALLS APP CON* 125.8 284.725	SIOUX FALLS TOWER* 118.3 (CTAF) 257.8	GND CON 121.9 348.6	UNICOM 122.95
----------------------	--	---	-------------------------------	-------------------------

Procedure NA for arrival on FSD VORTAC
airway radials 222 CW 319.

CATEGORY	A	B	C	D
LNNAV MDA	2000-1	576 (600-1)	NA	NA
CIRCLING	2000-1	570 (600-1)	NA	NA

SIOUX FALLS, SOUTH DAKOTA
Orig-G 21MAR24

43°35'N-96°45'W

RNAV (GPS) RWY 9
 JOE FOSS FLD (FSD)

NC-1, 07 AUG 2025 to 04 SEP 2025

NC-1, 07 AUG 2025 to 04 SEP 2025