

WAAS CH <b>97722</b> <b>W03A</b>	APP CRS <b>030°</b>	Rwy Idg TDZE Apt Elev	<b>8999</b> <b>1424</b> <b>1430</b>
--	------------------------	-----------------------------	---

## RNAV (GPS) RWY 3

JOE FOSS FLD (FSD)

RNP APCH - GPS.

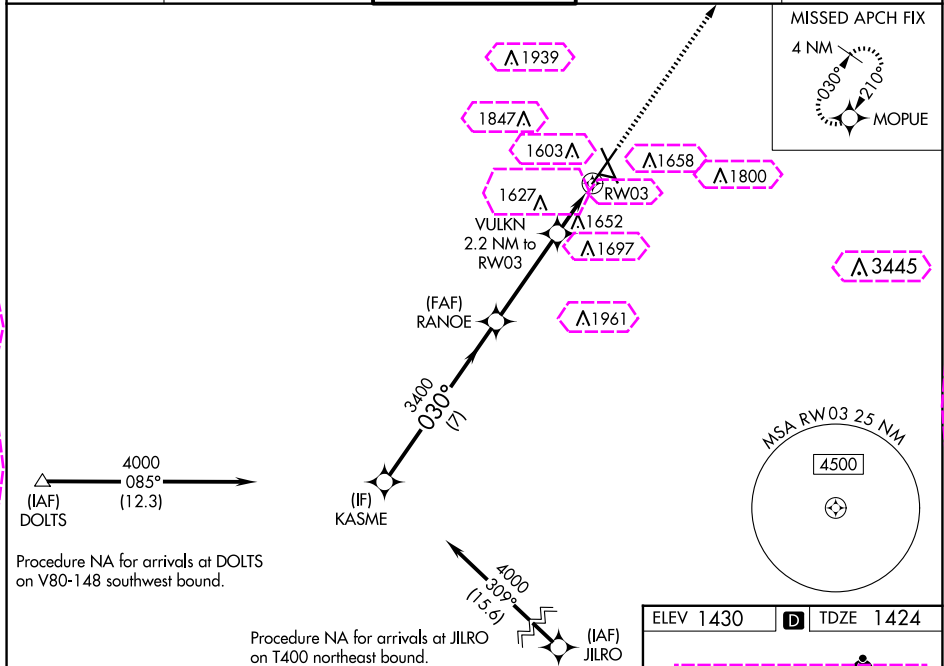


For uncompensated Baro-VNAV systems, LNAV/VNAV NA below -20°C or above 54°C. For inop ALS, increase LNAV/VNAV all Cats visibility to RVR 4500 and LNAV Cats C/D visibility to  $1\frac{3}{8}$  SM.

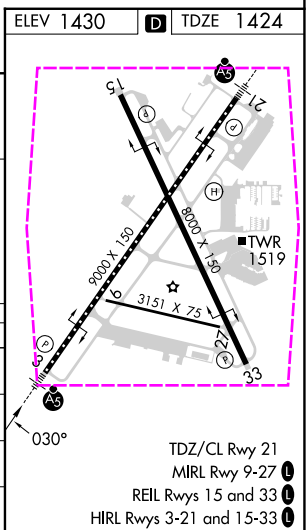


**MISSED APPROACH:** Climb to 4000  
direct MOPUE and hold.

ATIS 126.6	SIoux FALLS APP CON★ 125.8 284.725	SIoux FALLS TOWER★ 118.3 (CTAF) 0 257.8	GND CON 121.9 348.6	UNICOM 122.95
---------------	---------------------------------------	--	------------------------	------------------



CATEGORY	A	B	C	D
LPV DA	1674/24 250 (300-½)			
LNAV/VNAV DA	1741/24 317 (400-½)			
LNAV MDA	1920/24 496 (500-½)		1920/50 496 (500-1)	
CIRCLING	1980-1 550 (600-1)		2060-1¾ 630 (700-1¾)	2200-2½ 770 (800-2½)



SIoux FALLS, SOUTH DAKOTA

Amdt 1E 15JUN23

43°35'N-96°45'W

IOF FOSS FLD (ESD)

## RNAV (GPS) RWY 3

NC-1, 10 JUL 2025 to 07 AUG 2025

NC-1, 10 JUL 2025 to 07 AUG 2025

SIoux FALLS, SOUTH DAKOTA

AL-396 (FAA)

25219

WAAS CH <b>97722</b> <b>W03A</b>	APP CRS <b>030°</b>	Rwy Ldg TDZE <b>1424</b> Apt Elev <b>1430</b>
--	------------------------	---

RNAV (GPS) RWY 3

JOE FOSS FLD (FSD)

RNP APCH - GPS.

⚠

For uncompensated Baro-VNAV systems, LNAV/VNAV NA below -20°C or above 54°C. For inop ALS, increase LNAV/VNAV all Cats visibility to RVR 4500 and LNAV Cats C/D visibility to 1½ SM.

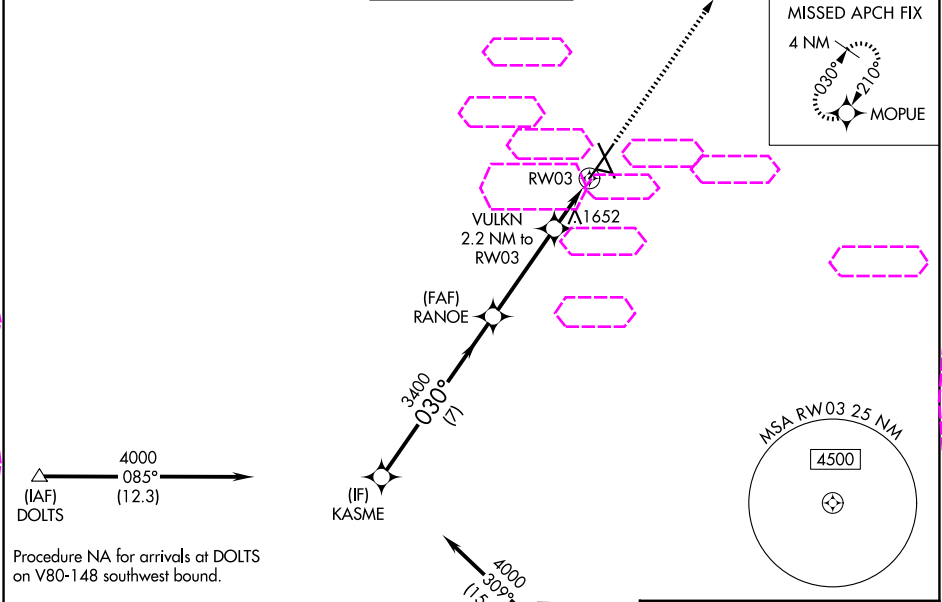
ASR

30°C

MALSR

MISSED APPROACH: Climb to 4000 direct MOUE and hold.

ATIS <b>126.6</b>	SIoux FALLS APP CON* <b>125.8 284.725</b>	SIoux FALLS TOWER* <b>118.3 (CTAF) 0 257.8</b>	GND CON <b>121.9 348.6</b>	UNICOM <b>122.95</b>
----------------------	--	---	-------------------------------	-------------------------



KASME				
RANOE				
VULKN 2.2 NM to RW03				
1.4 NM to RW03				
RW03				
GP 3.00° TCH 54				
7 NM 3.8 NM 0.8 NM 1.4 NM				
CATEGORY	A	B	C	D
LPV DA	1674/24 250 (300-½)			
LNAV/VNAV DA	1741/24 317 (400-½)			
LNAV MDA	1920/24 496 (500-½)	1920/50 496 (500-1)		
CIRCLING	1980-1 550 (600-1)	2060-1¾ 630 (700-1¾)	2200-2½ 770 (800-2½)	

ELEV 1430 TDZE 1424

TDZ/CL Rwy 21  
MIRL Rwy 9-27  
REIL Rws 15 and 33  
HIRL Rws 3-21 and 15-33

NC-1, 07 AUG 2025 to 04 SEP 2025

NC-1, 07 AUG 2025 to 04 SEP 2025

SIoux FALLS, SOUTH DAKOTA  
Amdt 1E 15JUN23

43°35'N-96°45'W

JOE FOSS FLD (FSD)

RNAV (GPS) RWY 3