

SIOUX FALLS, SOUTH DAKOTA

AL-396 (FAA)

25051

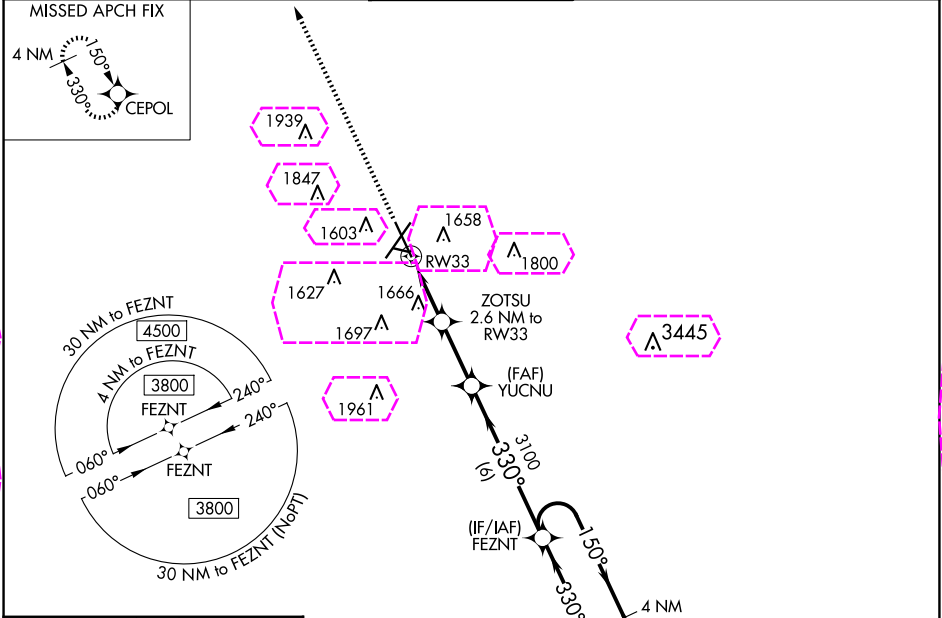
WAAS CH 40135 W33A	APP CRS 330°	Rwy Idg TDZE 1424 Apt Elev 1430
--	------------------------	---

RNAV (GPS) RWY 33

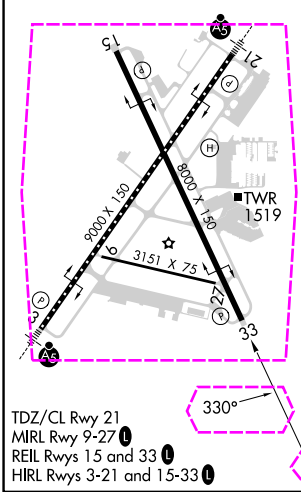
JOE FOSS FLD (F'SD)

RNP APCH-GPS.		MISSED APPROACH: Climb to 3800 direct CEPOL and hold.
Rwy 33 helicopter visibility reduction below $\frac{3}{4}$ SM NA. For uncompensated Baro-VNAV systems, procedure NA below -22°C or above 54°C.		

ATIS 126.6	SIOUX FALLS APP CON ★ 125.8 284.725	SIOUX FALLS TOWER ★ 118.3(CTAF) 0 257.8	GND CON 121.9 348.6	UNICOM 122.95
----------------------	---	---	-------------------------------	-------------------------



ELEV 1430	D	TDZE 1424
-----------	---	-----------



3800 CEPOL		VGSI and RNAV glidepath not coincident (VGSI Angle 3.00/TCH 45).		4 NM Holding Pattern	
YUCNU		FEZNT		150° 6000	
ZOTSU 2.6 NM to RW33		YUCNU 3100		330° 3800	
RW33 1.4 NM to RW33		2280		GP 3.00° TCH 45	
1.4 NM		1.2		6 NM	
CATEGORY	A	B	C	D	
LPV DA	1729- $\frac{7}{8}$		305 (300- $\frac{7}{8}$)		
LNAV/VNAV DA	1974- $1\frac{1}{8}$		550 (600- $1\frac{1}{8}$)		
LNAV MDA	1920-1		496 (500-1)		1920- $1\frac{3}{8}$ 496 (500- $1\frac{3}{8}$)
CIRCLING	1960-1 530 (600-1)	1980-1 550 (600-1)	2060- $1\frac{3}{4}$ 630 (700- $1\frac{3}{4}$)	2200- $2\frac{1}{2}$ 770 (800- $2\frac{1}{2}$)	

SIOUX FALLS, SOUTH DAKOTA

Amdt 2A 02DEC21

43°35'N-96°45'W

JOE FOSS FLD (F'SD)

RNAV (GPS) RWY 33

SIOUX FALLS, SOUTH DAKOTA

AL-396 (FAA)

25219

WAAS CH 40135 W33A	APP CRS 330°	Rwy Ldg TDZE 1424 Apt Elev 1430
--	------------------------	---

RNAV (GPS) RWY 33

JOE FOSS FLD (F'SD)

RNP APCH-GPS.

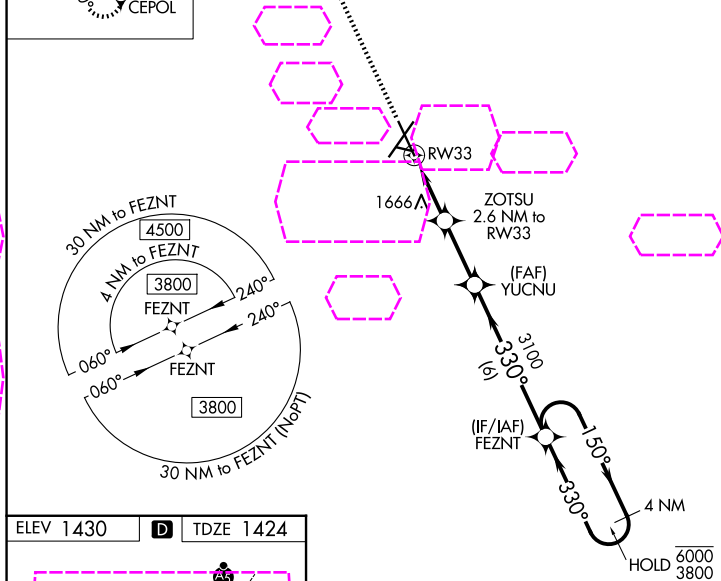
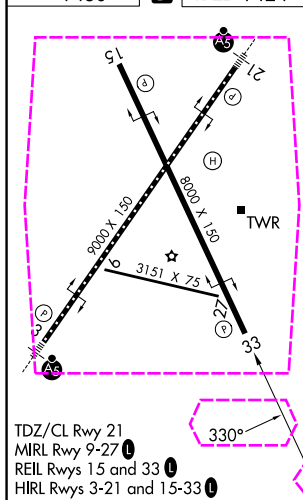
⚠ Rwy 33 helicopter visibility reduction below $\frac{3}{4}$ SM NA. For uncompensated Baro-VNAV systems, procedure NA below -22°C or above 54°C.

MISSED APPROACH:
Climb to 3800 direct
CEPOL and hold.

ASR
-30°C

ATIS 126.6	SIOUX FALLS APP CON ★ 125.8 284.725	SIOUX FALLS TOWER ★ 118.3 (CTAF) 0 257.8	GND CON 121.9 348.6	UNICOM 122.95
----------------------	---	--	-------------------------------	-------------------------

MISSED APCH FIX

ELEV 1430 **D** TDZE 1424

3800	CEPOL	VGSI and RNAV glidepath not coincident (VGSI Angle 3.00/TCH 45).		FEZNT	4 NM Holding Pattern
		ZOTSU 2.6 NM to RW33	YUCNU 3100	150°	6000
		1.4 NM to RW33	2280	330°	3800
		1.4 NM	1.2	2.5 NM	6 NM
CATEGORY	A	B	C	D	
LPV DA	1729- $\frac{7}{8}$ 305 (300- $\frac{7}{8}$)				
LNAV/VNAV DA	1974-1 $\frac{5}{8}$ 550 (600-1 $\frac{5}{8}$)				
LNAV MDA	1920-1	496 (500-1)	1920-1 $\frac{3}{8}$	496 (500-1 $\frac{3}{8}$)	
CIRCLING	1960-1	530 (600-1)	1980-1	550 (600-1)	
	530 (600-1)		2060-1 $\frac{3}{4}$	2200-2 $\frac{1}{2}$	
			630 (700-1 $\frac{3}{4}$)	770 (800-2 $\frac{1}{2}$)	

SIOUX FALLS, SOUTH DAKOTA

Amdt 2A 02DEC21

43°35'N-96°45'W

JOE FOSS FLD (F'SD)

RNAV (GPS) RWY 33

NC-1, 07 AUG 2025 to 04 SEP 2025

NC-1, 07 AUG 2025 to 04 SEP 2025