

SIoux FALLS, SOUTH DAKOTA

AL-396 (FAA)

25051

APP CRS	Rwy Idg	3151
272°	TDZE	1424
	Apt Elev	1430

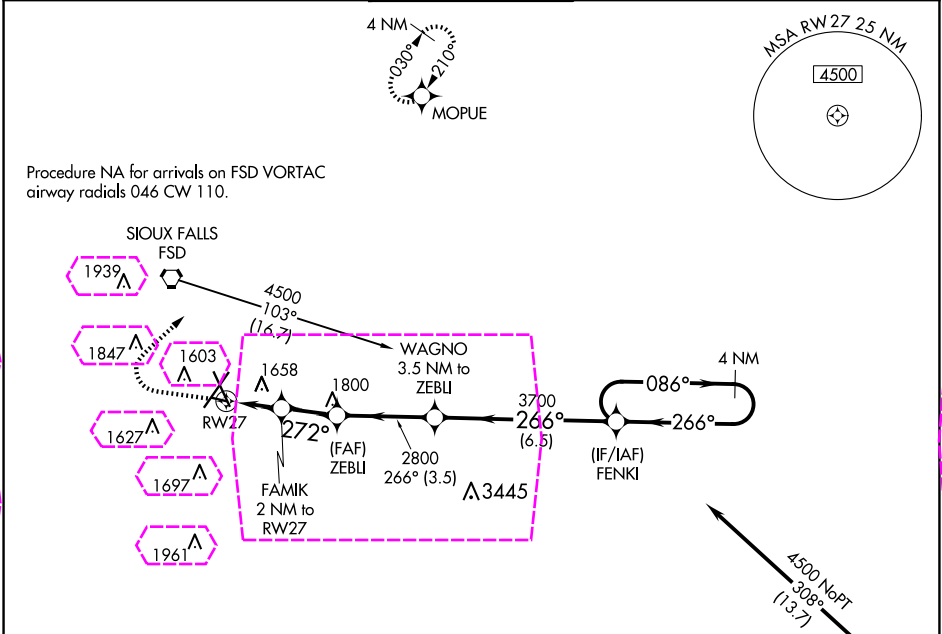
RNAV (GPS) RWY 27

JOE FOSS FLD (FSD)

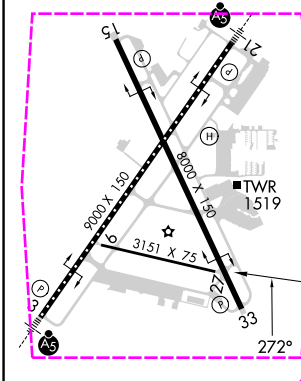
RNP APCH.	
ASR	Rwy 27 helicopter visibility reduction below 3/4 SM NA.
31°C	

MISSED APPROACH: Climb to 2500, then climbing right turn to 4000 direct MOPUE WP and hold.

ATIS	SIoux FALLS APP CON*	SIoux FALLS TOWER*	GND CON	UNICOM
126.6	125.8 284.725	118.3 (CTAF) 257.8	121.9 348.6	122.95



ELEV 1430	TDZE 1424
-----------	-----------



TDZ/CL Rwy 21

MIRL Rwy 9-27

REIL Rwy 15 and 33

HIRL Rwy 3-21 and 15-33

2500	4000	MOPUE		
			WAGNO 3.5 NM to ZEBLI	FENKI 4 NM Holding Pattern
			3700	4500
			266°	086°
			272°	266°
			2120	
			2800	
			3.15°	
			TCH 40	
			2 NM	2 NM
			3.5 NM	6.5 NM
CATEGORY	A	B	C	D
LNAV MDA	1960-1	536 (600-1)	NA	NA
CIRCLING	1960-1	1980-1	NA	NA
	530 (600-1)	550 (600-1)		

SIoux FALLS, SOUTH DAKOTA

Orig-F 18JUN20

43°35'N-96°45'W

RNAV (GPS) RWY 27

JOE FOSS FLD (FSD)

APP CRS	Rwy Ldg	3151
272°	TDZE	1424
	Apt Elev	1430

RNAV (GPS) RWY 27
JOE FOSS FLD (FSD)

JOE FOSS FLD (FSD)

RNP APCH.

ASR Rwy 27 helicopter visibility reduction below $\frac{3}{4}$ SM NA.

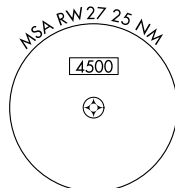
MISSED APPROACH: Climb to 2500, then climbing right turn to 4000 direct MOPUE WP and hold.

ATIS
126.6

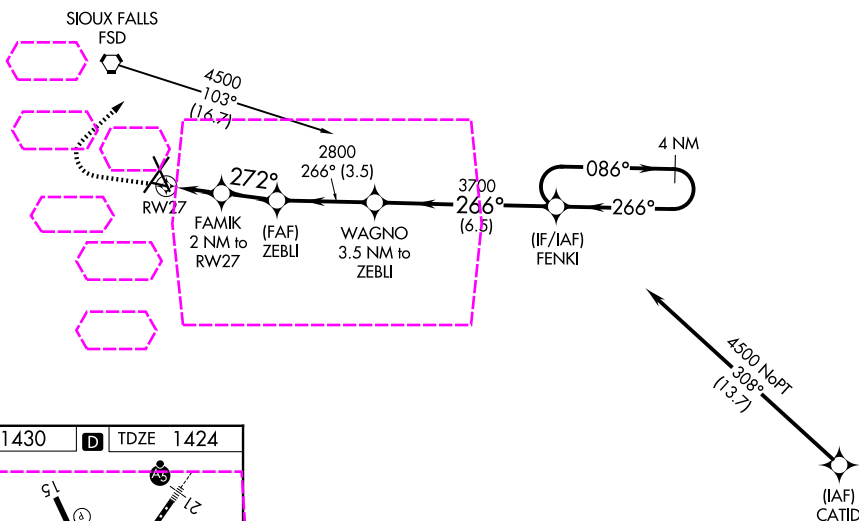
SIOUX FALLS APP CON★
125.8 284.725

SIOUX FALLS TOWER★
 118.3 (CTAF) **L** 257.8

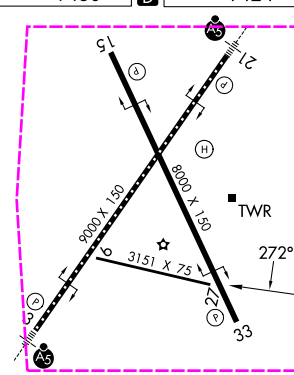
GND CON
121.9 348.6

UNICOM
122.95

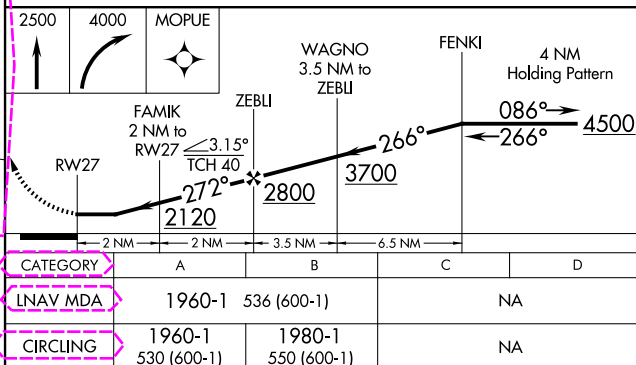
Procedure NA for arrivals on FSD VORTAC
airway radials 046 CW 110.



ELEV 1430		TDZE 1424
-----------	---	-----------



TDZ/CL Rwy 21
MIRL Rwy 9-27 **L**
REIL Rwys 15 and 33 **L**
HIRL Rwys 3-21 and 15-33 **L**



SIOUX FALLS, SOUTH DAKOTA
 Orig-F 18JUN20

43°35'N-96°45'W

JOE FOSS FLD (FSD)

RNAV (GPS) RWY 27

NC-1, 07 AUG 2025 to 04 SEP 2025

NC-1, 07 AUG 2025 to 04 SEP 2025