

WAAS CH 99323 W21A	APP CRS 210°	Rwy Idg TDZE Apt Elev	8999 1430 1430
--	------------------------	-----------------------------	---

RNAV (GPS) RWY 21

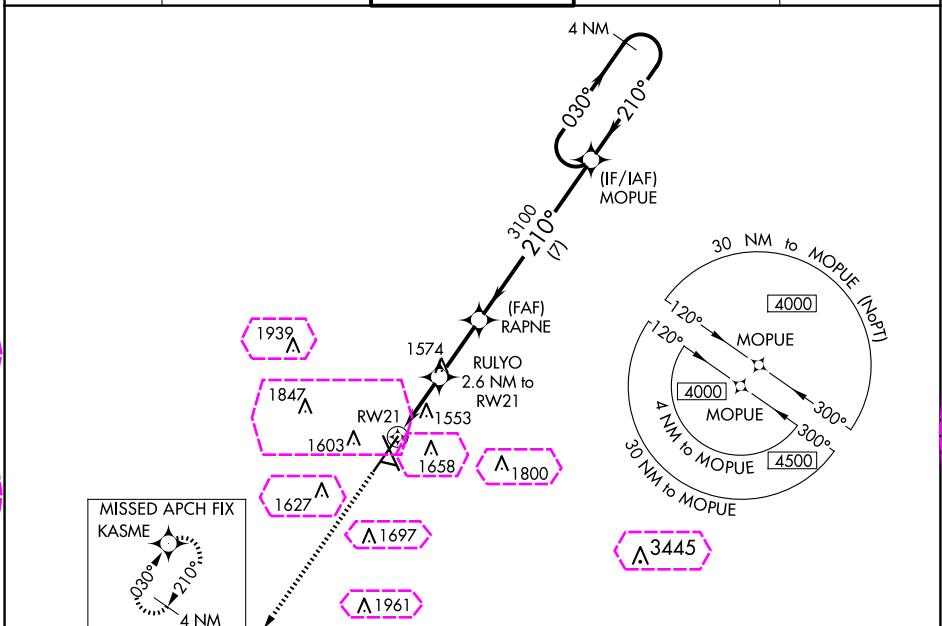
JOE FOSS FLD (FSD)

ASR For uncompensated Baro-VNAV systems, LNAV/VNAV NA below -22°C (-7°F) or above 54°C (130°F). DME/DME RNP-0.3 NA. For inop ALS, increase LPV all Cats visibility to RVR 4000 and LNAV/VNAV all Cats visibility to RVR 4500.

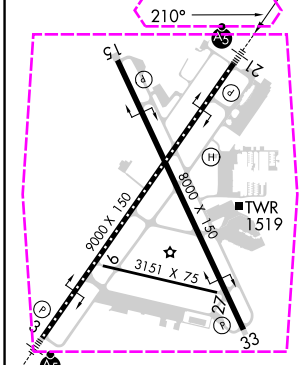
MALSR

MISSED APPROACH:
Climb to 4000 direct
KASME and hold.

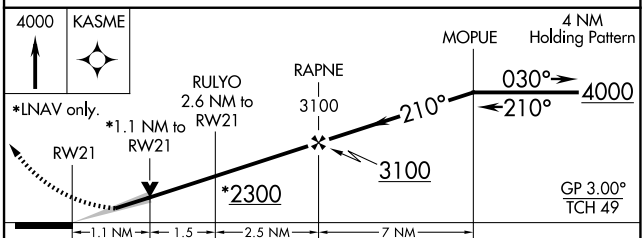
ATIS 126.6	SIoux FALLS APP CON★ 125.8 284.725	SIoux FALLS TOWER★ 118.3 (CTAF) 0 257.8	GND CON 121.9 348.6	UNICOM 122.95
---------------	---------------------------------------	--	------------------------	------------------



ELEV 1430	D	TDZE 1430
-----------	----------	-----------



TDZ/CL Rwy 21
MIRL Rwy 9-27 **L**
REIL Rwys 15 and 33 **L**
HIRL Rwys 3-21 and 15-33 **L**



CATEGORY	A	B	C	D
LPV DA	1630/18 200 (300-½)			
LNAV/ VNAV DA	1704/24 274 (300-½)			
LNAV MDA	1820/24 390 (400-½)	1820/35 390 (400-¾)		
C CIRCLING	1960-1 530 (600-1)	1980-1 550 (600-1)	2060-1¾ 630 (700-1¾)	2200-2½ 770 (800-2½)

NC-1, 10 JUL 2025 to 07 AUG 2025

NC-1, 10 JUL 2025 to 07 AUG 2025

WAAS CH 99323 W21A	APP CRS 210°	Rwy Ldg 8999 TDZE 1430 Apt Elev 1430
--	------------------------	---

RNAV (GPS) RWY 21

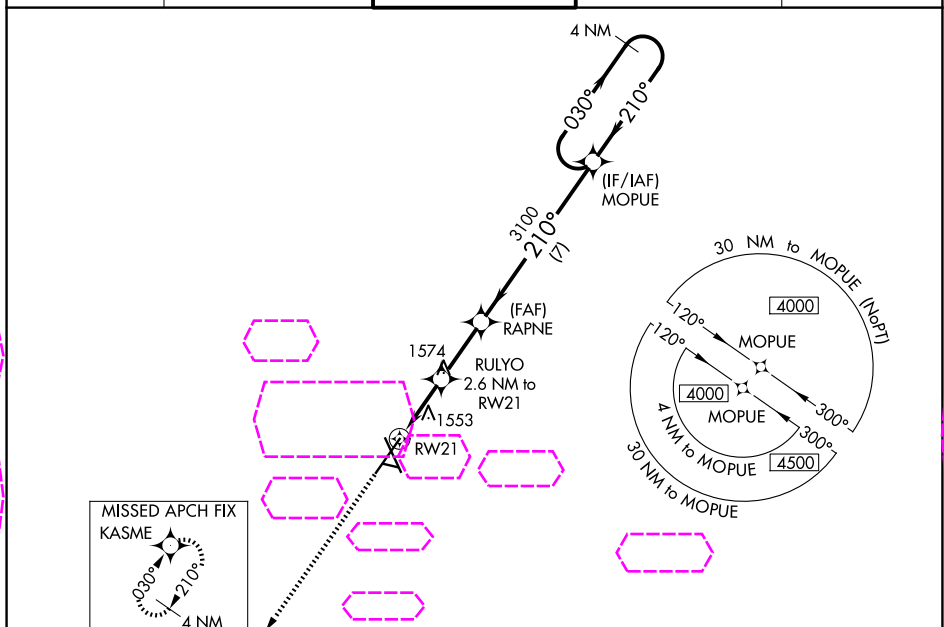
JOE FOSS FLD (FSD)

For uncompensated Baro-VNAV systems, LNAV/VNAV NA below -22°C (-7°F) or above 54°C (130°F). DME/DME RNP-0.3 NA. For inop ALS, increase LPV all Cats visibility to RVR 4000 and LNAV/VNAV all Cats visibility to RVR 4500.

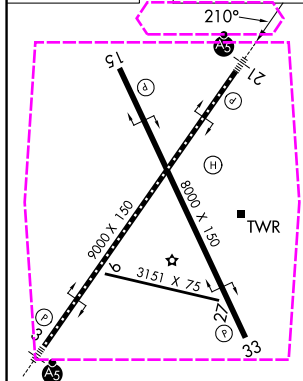
MALSR

MISSED APPROACH:
Climb to 4000 direct
KASME and hold.

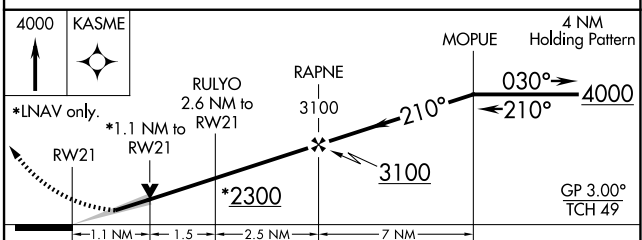
ATIS 126.6	SIoux FALLS APP CON* 125.8 284.725	SIoux FALLS TOWER* 118.3 (CTAF) 0 257.8	GND CON 121.9 348.6	UNICOM 122.95
-----------------------------	---	--	--------------------------------------	--------------------------------



ELEV 1430	D	TDZE 1430
-----------	----------	-----------



TDZ/CL Rwy 21
MIRL Rwy 9-27 **L**
REIL Rwy 15 and 33 **L**
HIRL Rwy 3-21 and 15-33 **L**



CATEGORY	A	B	C	D
LPV DA	1630/18 200 (300-½)			
LNAV/VNAV DA	1704/24 274 (300-½)			
LNAV MDA	1820/24 390 (400-½)	1820/35 390 (400-¾)		
CIRCLING	1960-1 530 (600-1)	1980-1 550 (600-1)	2060-1¾ 630 (700-1¾)	2200-2½ 770 (800-2½)

SIoux FALLS, SOUTH DAKOTA

Amdt 2 07DEC17

43°35'N-96°45'W

JOE FOSS FLD (FSD)

RNAV (GPS) RWY 21

NC-1, 07 AUG 2025 to 04 SEP 2025

NC-1, 07 AUG 2025 to 04 SEP 2025