

SIOUX FALLS, SOUTH DAKOTA

AL-396 (FAA)

25051

WAAS CH <b>90235</b> <b>W15A</b>	APP CRS <b>150°</b>	Rwy Idg TDZE <b>1429</b> Apt Elev <b>1430</b>
--	------------------------	---

# RNAV (GPS) RWY 15

JOE FOSS FLD (FSD)

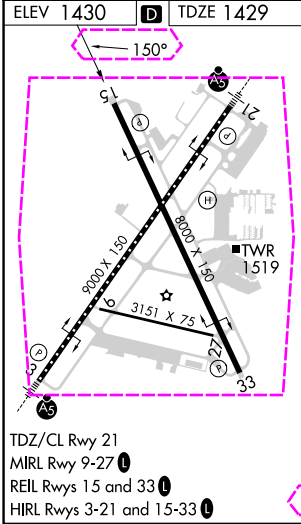
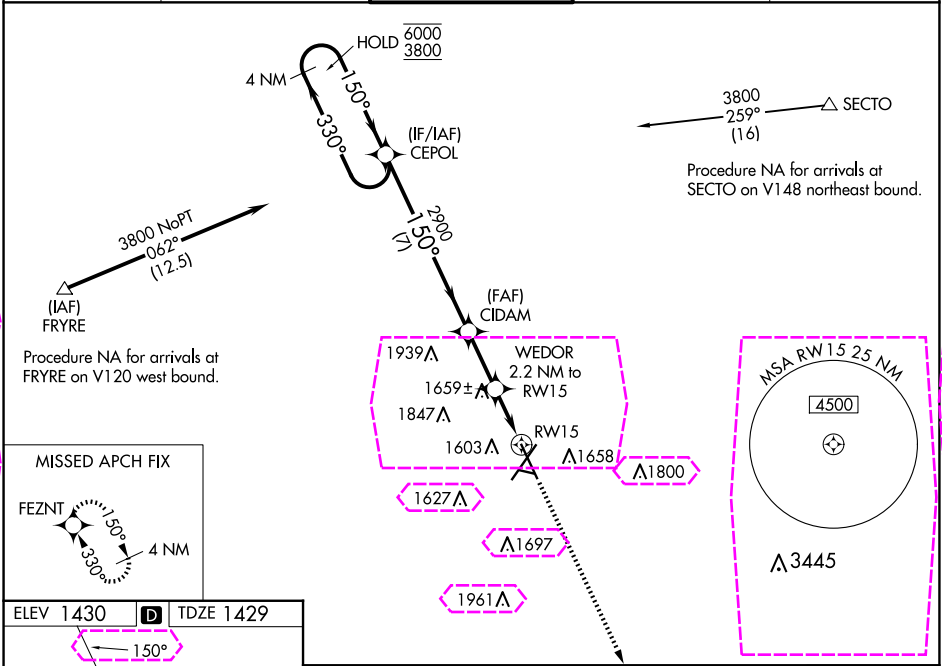
RNP APCH-GPS.

**⚠** Rwy 15 helicopter visibility reduction below 3/4 SM NA. For uncompensated Baro-VNAV systems, LNAV/VNAV NA below -21°C or above 54°C.

**ASR** **-31°C**

MISSED APPROACH: Climb to 3800 direct FEZNT and hold.

ATIS <b>126.6</b>	SIOUX FALLS APP CON ★ <b>125.8 284.725</b>	SIOUX FALLS TOWER ★ <b>118.3 (CTAF) 257.8</b>	GND CON <b>121.9 348.6</b>	UNICOM <b>122.95</b>
----------------------	---	--	-------------------------------	-------------------------



CEPOL 4 NM Holding Pattern 6000 3800 330° 150°				CIDAM 2900 WEDOR 2.2 NM to RWY 15 1.4 NM to RWY 15 RWY 15		3800 FEZNT
GP 3.00° TCH 48				2900 2160		
				7 NM 2.3 NM 0.8 1.4 NM		
CATEGORY	A	B	C	D		
LPV DA	1839-1 1/8		410 (500-1 1/8)			
LNAV/VNAV DA	1909-1 3/8		480 (500-1 3/8)			
LNAV MDA	1920-1 491 (500-1)		1920-1 3/8 491 (500-1 3/8)			
<b>CIRCLING</b>	1960-1 530 (600-1)	1980-1 550 (600-1)	2060-1 3/4 630 (700-1 3/4)	2200-2 1/2 770 (800-2 1/2)		

SIOUX FALLS, SOUTH DAKOTA  
Amdt 1B 02DEC21

43°35'N-96°45'W

# RNAV (GPS) RWY 15

JOE FOSS FLD (FSD)

NC-1, 10 JUL 2025 to 07 AUG 2025

NC-1, 10 JUL 2025 to 07 AUG 2025

SIOUX FALLS, SOUTH DAKOTA

AL-396 (FAA)

25219

WAAS CH <b>90235</b> <b>W15A</b>	APP CRS <b>150°</b>	Rwy Ldg TDZE <b>1429</b> Apt Elev <b>1430</b>
--	------------------------	---

# RNAV (GPS) RWY 15

JOE FOSS FLD (FSD)

RNP APCH-GPS.

⚠

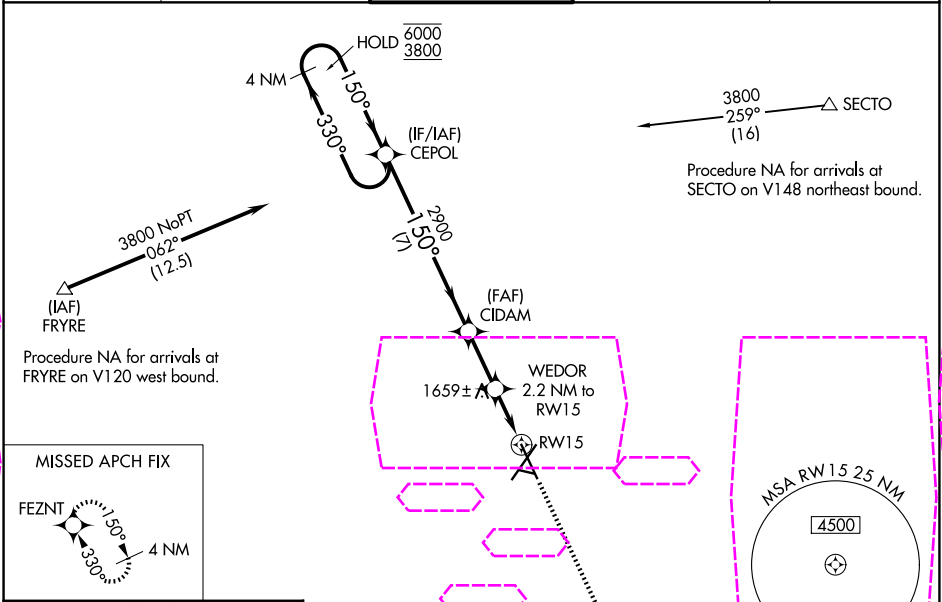
⚠

ASR

Rwy 15 helicopter visibility reduction below ¾ SM NA. For uncompensated Baro-VNAV systems, LNAV/VNAV NA below -21°C or above 54°C.

MISSED APPROACH: Climb to 3800 direct FEZNT and hold.

ATIS <b>126.6</b>	SIOUX FALLS APP CON ★ <b>125.8 284.725</b>	SIOUX FALLS TOWER ★ <b>118.3 (CTAF) 257.8</b>	GND CON <b>121.9 348.6</b>	UNICOM <b>122.95</b>
----------------------	---	--	-------------------------------	-------------------------



ELEV 1430 TDZE 1429

TDZ/CL Rwy 21  
MIRL Rwy 9-27  
REIL Rwy 15 and 33  
MIRL Rwy 3-21 and 15-33

CEPOL		CIDAM		WEDOR	
4 NM Holding Pattern		2900		2.2 NM to RWY 15	
6000 3800		150°		1.4 NM to RWY 15	
GP 3.00° TCH 48		2900		2160	
7 NM		2.3 NM		0.8	
CATEGORY	A	B	C	D	
LPV DA	1839-1⅓		410 (500-1⅓)		
LNAV/VNAV DA	1909-1⅓		480 (500-1⅓)		
LNAV MDA	1920-1		491 (500-1)		
CIRCLING	1960-1 530 (600-1)	1980-1 550 (600-1)	2060-1⅓ 630 (700-1⅓)	2200-2½ 770 (800-2½)	

SIOUX FALLS, SOUTH DAKOTA  
Amdt 1B 02DEC21

43°35'N-96°45'W

# RNAV (GPS) RWY 15

JOE FOSS FLD (FSD)