

LOC I-FSD	APP CRS	Rwy Idg	8999
<u>109.9</u>	030°	TDZE	1424
		Apt Elev	1430

ILS or LOC RWY 3
JOE FOSS FLD (FSD)



 ASR
  -31°C

MALSR
A5

MISSED APPROACH: Climb to 3400 then left turn direct FSD VORTAC and hold.

ATIS
126.6

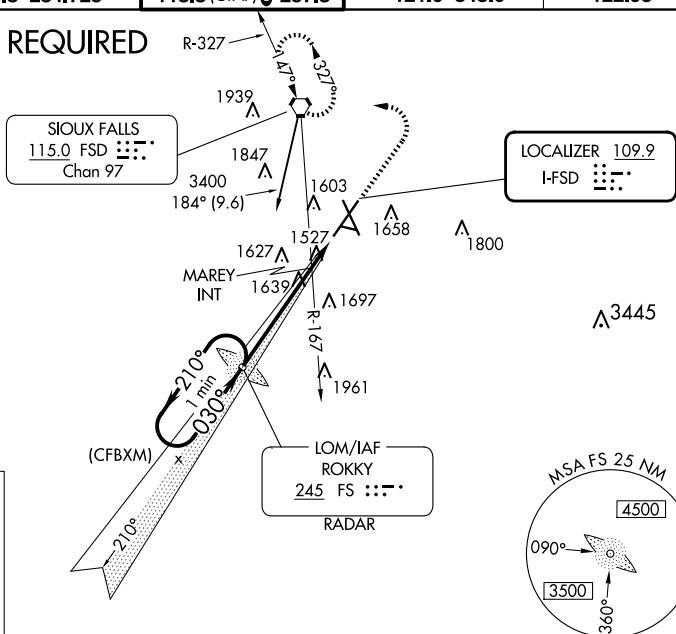
SIOUX FALLS APP CON ★
 125.8 284.725

SIOUX FALLS TOWER★
 118.3 (CTAF) 257.8

GND CON
121.9 348.6

UNICOM
122.95

ADF or RADAR REQUIRED



ALTERNATE
MISSED APCH FIX



One Minute Holding Pattern

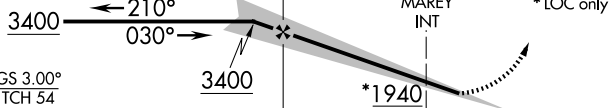
FS LOM
RADAR

3400

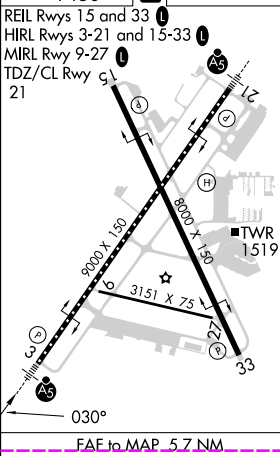
FSD

ELEV 1430	D	TDZE 1424
-----------	----------	-----------

REIL Rwy 15 and 33
HIRL Rwy 3-21 and 15
MIRL Rwy 9-27
TDZ/CL Rwy 5
21



CATEGORY	A	B	C	D
S-ILS 3	1674/24 250 (300-½)			
S-LOC 3	1940/24 516 (600-½)	1940/55 516 (600-1)		
CIRCLING	1960-1 530 (600-1)	1980-1 550 (600-1)	2060-1¾ 630 (700-1¾)	2200-2½ 770 (800-2½)
MAREY FIX MINIMUMS (DUAL VOR RECEIVERS REQUIRED)				
S-LOC 3	1800/24 376 (400-½)	1800/35 376 (400-¾)		
CIRCLING	1960-1 530 (600-1)	1980-1 550 (600-1)	2060-1¾ 630 (700-1¾)	2200-2½ 770 (800-2½)



SIoux FALLS, SOUTH DAKOTA
Amdt 27G 18JUN20

43°35'N-96°45'W

JOE FOSS FLD (FSD)
ILS or LOC RWY 3

NC-1, 10 JUL 2025 to 07 AUG 2025

SIOUX FALLS, SOUTH DAKOTA

AL-396 (FAA)

25219

LOC FSD 109.9	APP CRS 030°	Rwy Ldg TDZE Apt Elev	8999 1424 1430
-------------------------	------------------------	-----------------------------	---

ILS or LOC RWY 3

JOE FOSS FLD (FSD)

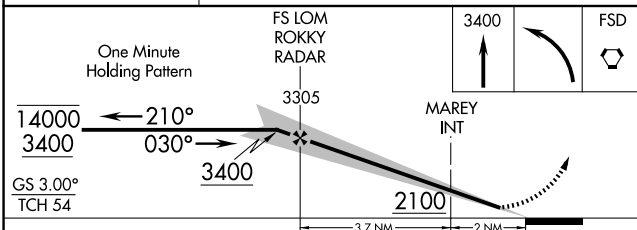
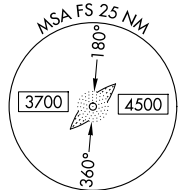
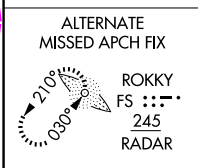
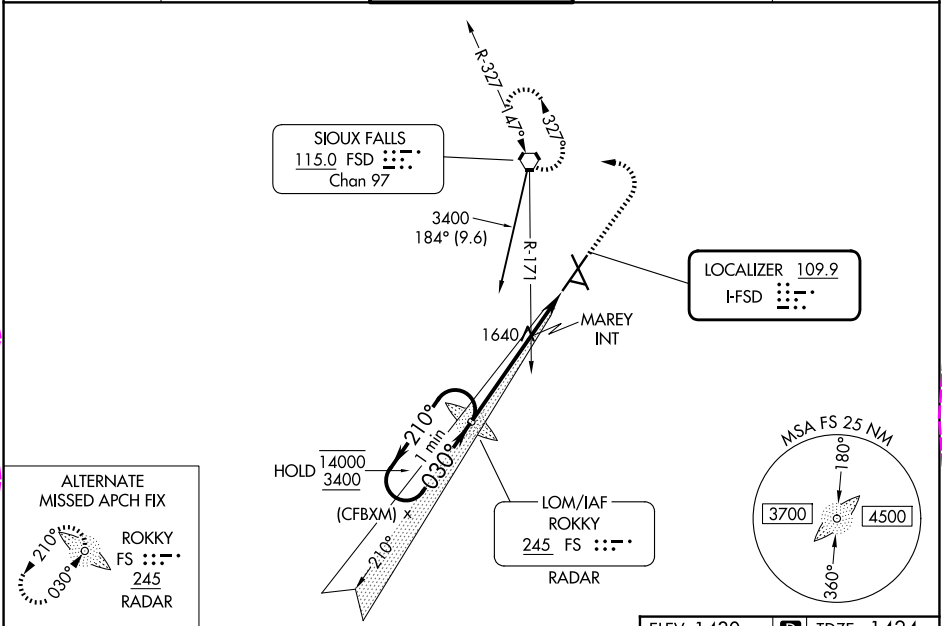
ADF or RADAR required.

⚠ For inop ALS, increase S-LOC 3 Cats C/D visibility to 1½ SM, and S-LOC 3 MAREY fix minimums Cats C/D to 1½ SM.
❄ -30°C

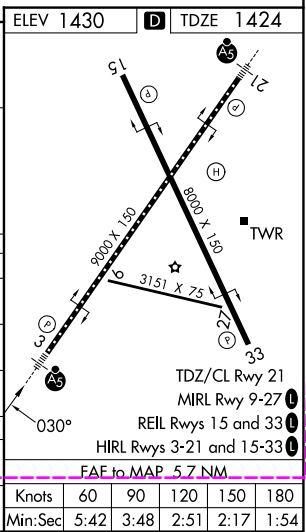


MISSED APPROACH: Climb to 3400 then left turn direct FSD VORTAC and hold.

ATIS 126.6	SIOUX FALLS APP CON* 125.8 284.725	SIOUX FALLS TOWER* 118.3 (CTAF) 0 257.8	GND CON 121.9 348.6	UNICOM 122.95
----------------------	--	---	-------------------------------	-------------------------



CATEGORY	A	B	C	D
S-ILS 3	1674/24 250 (300-½)			
S-LOC 3	2100/24	676 (700-½)	2100-1½	676 (700-1½)
CIRCLING	2100-1	670 (700-1)	2100-1¾ 670 (700-1¾)	2200-2½ 770 (800-2½)
MAREY FIX MINIMUMS (DUAL VOR RECEIVERS REQUIRED)				
S-LOC 3	1940/24	516 (600-½)	1940/55	516 (600-1)
CIRCLING	1980-1	550 (600-1)	2060-1¾ 630 (700-1¾)	2200-2½ 770 (800-2½)



SIOUX FALLS, SOUTH DAKOTA
Amdt 28 07AUG25

43°35'N-96°45'W

ILS or LOC RWY 3

JOE FOSS FLD (FSD)

NC-1, 07 AUG 2025 to 04 SEP 2025

NC-1, 07 AUG 2025 to 04 SEP 2025