

SIOUX FALLS, SOUTH DAKOTA

AL-396 (FAA)

25051

LOC I-JOU	APP CRS	Rwy Idg	8999
111.1	210°	TDZE	1430
		Apt Elev	1430

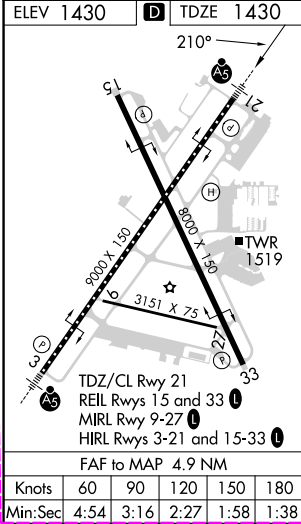
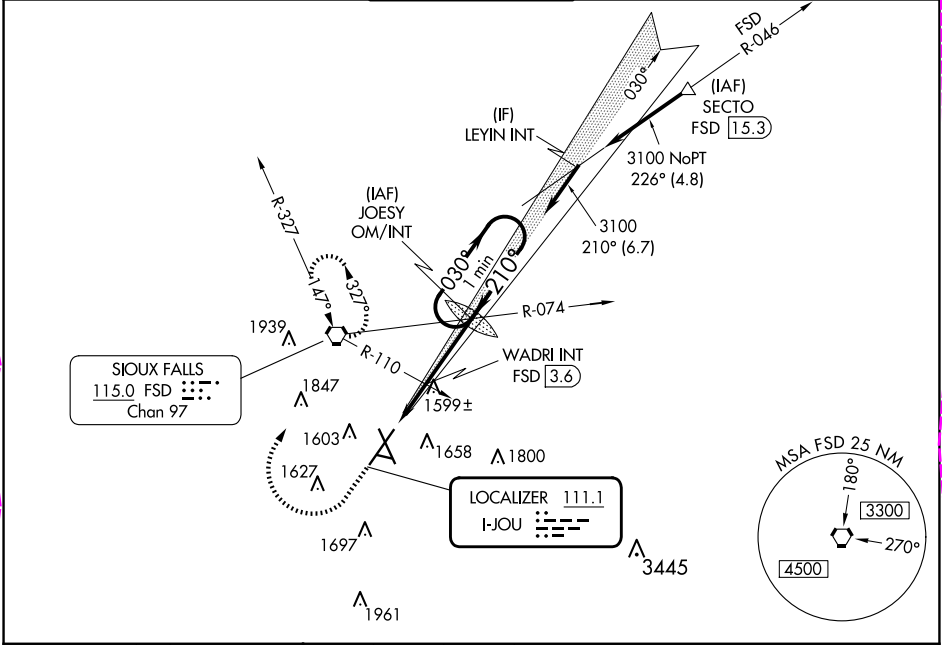
ILS or LOC RWY 21  
JOE FOSS FLD (FSD)

**For inoperative MALSR increase S-ILS all Cats visibility to ¾ mile, increase S-LOC 21 Cat C/D visibility to 1 ½ mile. When using WADRI FIX minimums, increase S-LOC 21 Cat C/D visibility to 1 mile.**

**MALSR**

**MISSED APPROACH:** Climb to 3400 then right turn direct FSD VORTAC and hold.

ATIS 126.6	SIOUX FALLS APP CON * 125.8 284.725	SIOUX FALLS TOWER * 118.3 (CTAF) 0 257.8	GND CON 121.9 348.6	UNICOM 122.95
---------------	--	---	------------------------	------------------



ELEV 1430	TDZE 1430	3400	FSD	JOESY OM/INT	One Minute Holding Pattern
210°					
*LOC only.	WADRI INT FSD 3.6	3047	030°	210°	3100
	2100*				GS 3.00° TCH 49
	2 NM	2.9 NM			
CATEGORY	A	B	C	D	
S-ILS 21	1630/18 200 (200-½)				
S-LOC 21	2100/24	670 (700-½)	2100-1½	670 (700-1½)	
CIRCLING	2100-1	670 (700-1)	2100-1¾	2200-2½	670 (700-1¾) 770 (800-2½)
WADRI FIX MINIMUMS					
S-LOC 21	1800/24	370 (400-½)	1800/35	370 (400-¾)	
CIRCLING	1960-1	1980-1	2060-1¾	2200-2½	530 (600-1) 550 (600-1) 630 (700-1¾) 770 (800-2½)

SIOUX FALLS, SOUTH DAKOTA

Amdt 10C 18JUN20

43°35'N-96°45'W

JOE FOSS FLD (FSD)  
ILS or LOC RWY 21

NC-1, 10 JUL 2025 to 07 AUG 2025

NC-1, 10 JUL 2025 to 07 AUG 2025

SIoux FALLS, SOUTH DAKOTA

AL-396 (FAA)

25219

LOC I-JOU <b>111.1</b>	APP CRS <b>210°</b>	Rwy Ldg TDZE <b>1430</b> Apt Elev <b>1430</b>
---------------------------	------------------------	---

# ILS or LOC RWY 21

JOE FOSS FLD (FSD)

**⚠** For inop ALS, increase S-LOC 21 Cats C/D visibility to 1 1/2 SM and S-LOC 21 WADRI fix minimums Cats C/D visibility to RVR 5500.

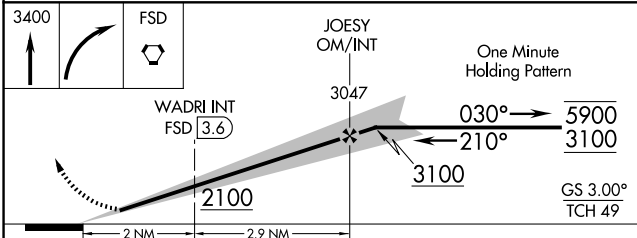
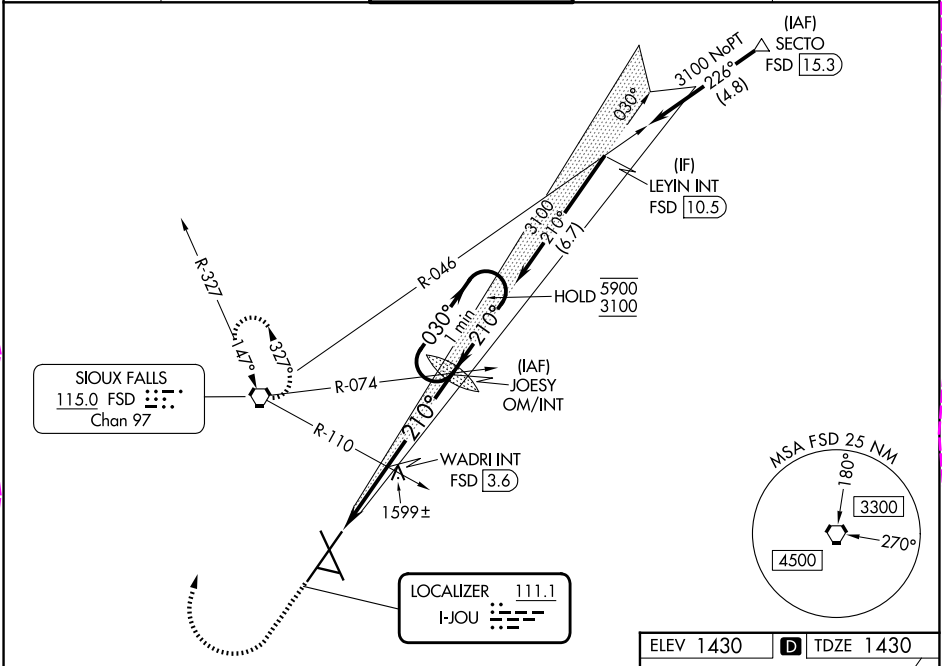
**⚠** -30°C

**MALSR**

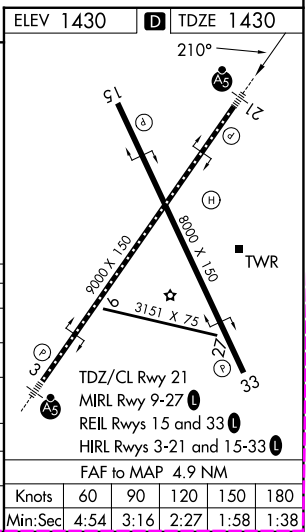
**A5**

**MISSED APPROACH:** Climb to 3400 then right turn direct FSD VORTAC and hold.

ATIS <b>126.6</b>	SIoux FALLS APP CON* <b>125.8 284.725</b>	SIoux FALLS TOWER* <b>118.3 (CTAF) 257.8</b>	GND CON <b>121.9 348.6</b>	UNICOM <b>122.95</b>
----------------------	--	---	-------------------------------	-------------------------



CATEGORY	A	B	C	D
S-ILS 21	1630/18		200 (200-1/2)	
S-LOC 21	2100/24	670 (700-1/2)	2100-1 1/2	670 (700-1/2)
CIRCLING	2100-1	670 (700-1)	2100-1 3/4	2200-2 1/2
WADRI FIX MINIMUMS				
S-LOC 21	1800/24	370 (400-1/2)	1800/35	370 (400-3/4)
CIRCLING	1980-1	550 (600-1)	2060-1 3/4	2200-2 1/2



SIoux FALLS, SOUTH DAKOTA

Amdt 10D 07AUG25

43°35'N-96°45'W

JOE FOSS FLD (FSD)

# ILS or LOC RWY 21

NC-1, 07 AUG 2025 to 04 SEP 2025

NC-1, 07 AUG 2025 to 04 SEP 2025