

IMPERIAL, NEBRASKA

AL-390 (FAA)

19115

WAAS CH 72903 W31A	APP CRS 315°	Rwy Idg 5022 TDZE 3270 Apt Elev 3275
----------------------------------------	------------------------	-----------------------------------------------------------------

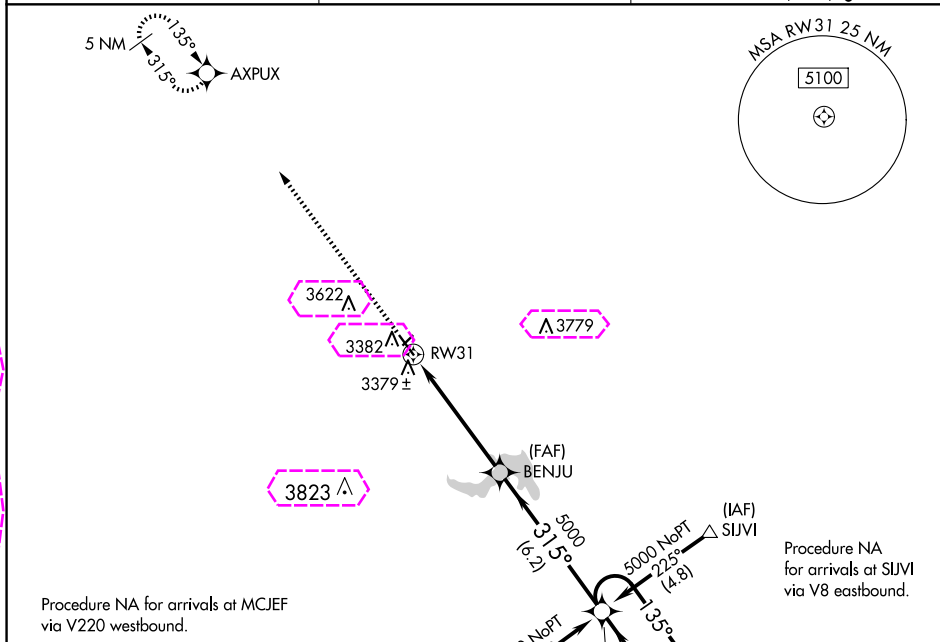
RNAV (GPS) RWY 31

IMPERIAL MUNI (IML)

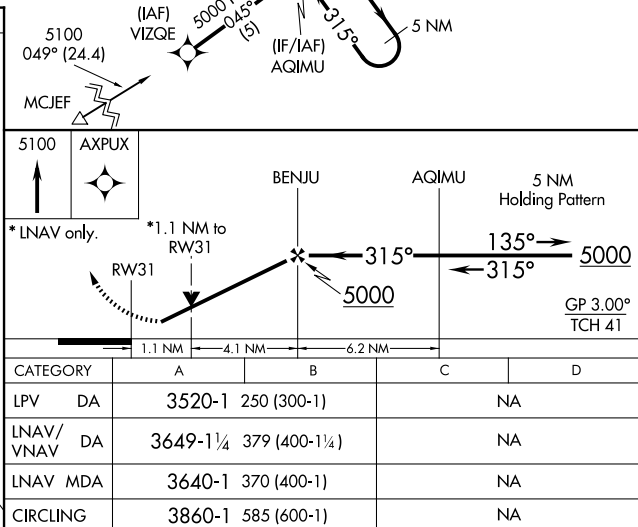
⚠ Baro-VNAV NA when using Ogallala altimeter setting. For uncompensated Baro-VNAV systems, LNAV/VNAV NA below -21°C (-5°F) or above 54°C (130°F). DME/DME RNP-0.3 NA. Helicopter visibility reduction below $\frac{3}{4}$ SM NA. If local altimeter setting not received, use Ogallala altimeter setting and increase all DAs 86 feet and all MDAs 100 feet. VDP NA when using Ogallala altimeter setting. Circling NA to Rwy 3 and 21.

MISSED APPROACH:
Climb to 5100 direct
AXPUX and hold.

ASOS 124.175	DENVER CENTER 132.7 397.85	UNICOM 122.8 (CTAF) 0
------------------------	--------------------------------------	----------------------------------------



ELEV 3275 TDZE 3270



IMPERIAL, NEBRASKA

Amdt 1B 31MAR16

40°31'N-101°37'W

IMPERIAL MUNI (IML)

RNAV (GPS) RWY 31

NC-2, 10 JUL 2025 to 07 AUG 2025

NC-2, 10 JUL 2025 to 07 AUG 2025

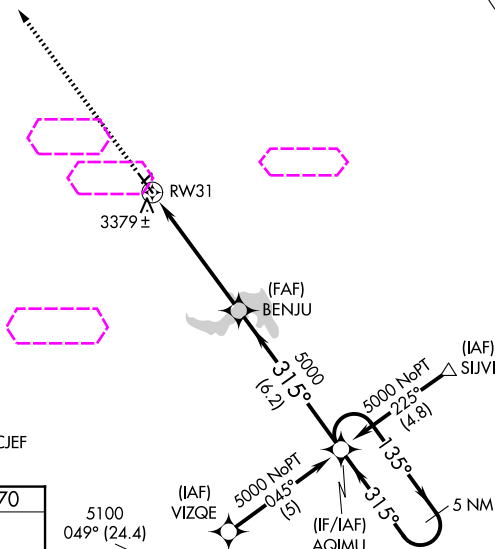
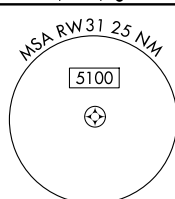
RNAV (GPS) RWY 31
IMPERIAL MUNI (IML)

WAAS CH 72903 W31A	APP CRS 315°	Rwy Ldg 5022 TDZE 3270 Apt Elev 3275
----------------------------------------	------------------------	-----------------------------------------------------------------

⚠ Baro-VNAV NA when using Ogallala altimeter setting. For uncompensated Baro-VNAV systems, LNAV/VNAV NA below -21°C (-5°F) or above 54°C (130°F). DME/DME RNP-0.3 NA. Helicopter visibility reduction below ½ SM NA. If local altimeter setting not received, use Ogallala altimeter setting and increase all DAs 86 feet and all MDAs 100 feet. VDP NA when using Ogallala altimeter setting. Circling NA to Rwy's 3 and 21.

MISSED APPROACH:
Climb to 5100 direct
AXPUX and hold.

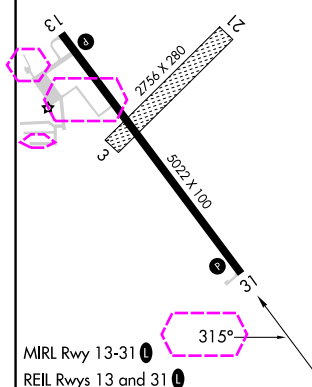
ASOS 124.175	DENVER CENTER 132.7 397.85	UNICOM 122.8 (CTAF) 1
------------------------	--------------------------------------	---------------------------------



Procedure NA for arrivals at MCJEF
via V220 westbound.

Procedure NA
for arrivals at SIJVI
via V8 eastbound.

ELEV 3275		TDZE 3270
-----------	--	-----------



5100

AXPUS

BENJU

AQIMU

5 NM Holding Pattern

* LNAV only.

* 1.1 NM to RW31

RW31

315°

135°

5000

315°

5000

GP 3.00°

TCH 41

1.1 NM

4.1 NM

6.2 NM

CATEGORY	A	B	C	D
LPV DA	3520-1	250 (300-1)		NA
LNAV/VNAV DA	3649-1¼	379 (400-1¼)		NA
LNAV MDA	3640-1	370 (400-1)		NA
CIRCLING	3860-1	585 (600-1)		NA

NC-2, 07 AUG 2025 to 04 SEP 2025

NC-2, 07 AUG 2025 to 04 SEP 2025