

SEATTLE, WASHINGTON

AL-384 (FAA-O)

25051

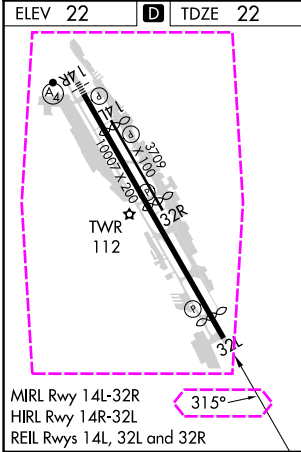
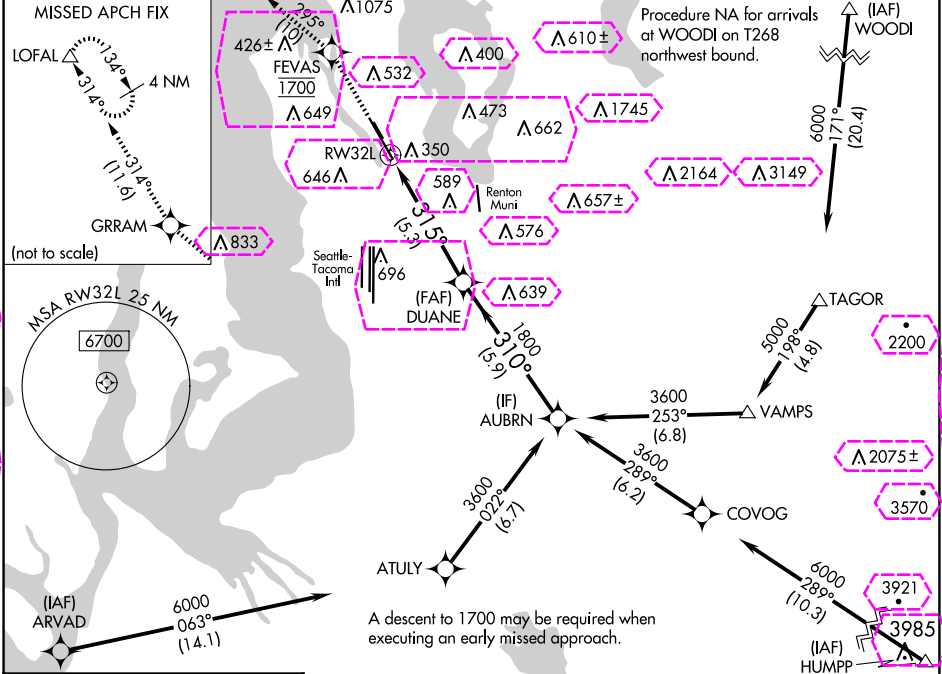
APP CRS	Rwy Idg	9120
315°	TDZE	22
	Apt Elev	22

RNAV (RNP) Z RWY 32L

BOEING FLD/KING COUNTY INTL (BFI)

RNP AR APCH - GPS.	MISSED APPROACH: Climb direct FEVAS, cross FEVAS at 1700, then climb to 3000 on the RNAV missed approach route to LOFAL and hold.
RADAR required for missed approach.	
For uncompensated Baro-VNAV systems, procedure NA below -6°C or above 54°C.	

ATIS 127.75	SEATTLE APP CON 125.9 306.9	BOEING TOWER 120.6 257.8	GND CON 121.9	CLNC DEL 132.4
----------------	--------------------------------	-----------------------------	------------------	-------------------



FEVAS 1700	3000 tr 295°	GRRAM tr 314°	LOFAL	AUBURN
VGSI and RNAV glidepath not coincident (VGSI Angle 3.10/TCH 66).				
RW32L 1800 315° 310° 3600				
DUANE 1800 310° 3600				
GP 3.10° TCH 49				
CATEGORY	A	B	C	D
RNP 0.10 DA	567-1½ 545 (600-1%)			
RNP 0.15 DA	681-1½ 659 (700-1%)			
RNP 0.30 DA	836-2½ 814 (900-2½)			
AUTHORIZATION REQUIRED				

SEATTLE, WASHINGTON
Orig 10AUG23

47°32'N-122°18'W

BOEING FLD/KING COUNTY INTL (BFI)
RNAV (RNP) Z RWY 32L

NW-1, 10 JUL 2025 to 07 AUG 2025

NW-1, 10 JUL 2025 to 07 AUG 2025

SEATTLE, WASHINGTON

AL-384 (FAA-O)

25219

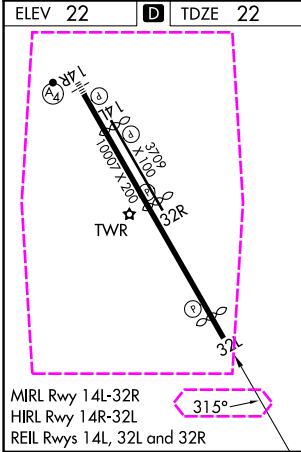
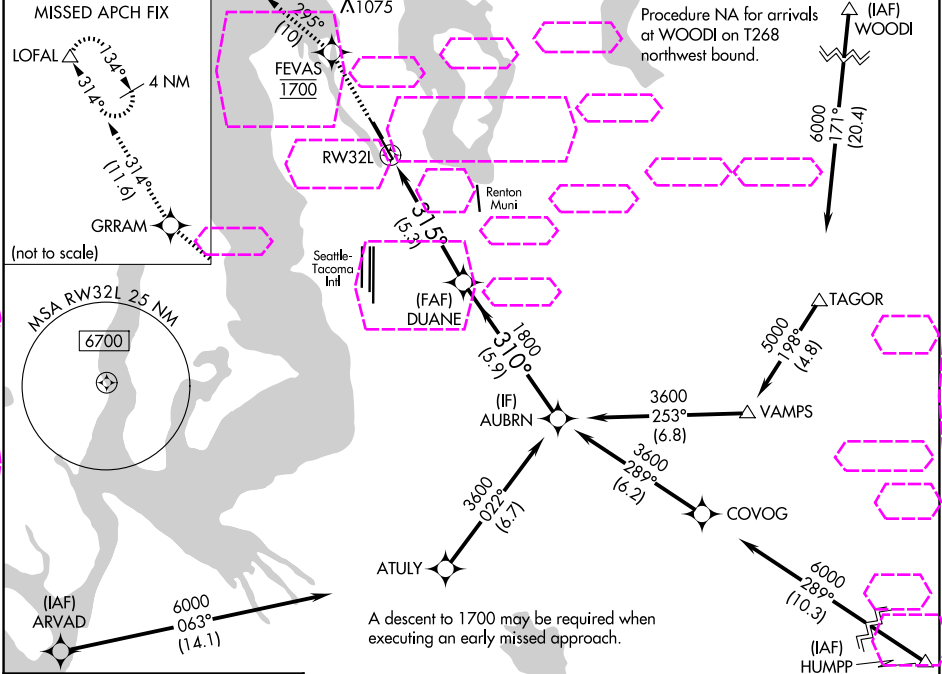
APP CRS	Rwy Ldg	9120
315°	TDZE	22
	Apt Elev	22

RNAV (RNP) Z RWY 32L

BOEING FLD/KING COUNTY INTL (BFI)

RNP AR APCH - GPS.	MISSED APPROACH: Climb direct FEVAS, cross FEVAS at 1700, then climb to 3000 on the RNAV missed approach route to LOFAL and hold.
RADAR required for missed approach.	
For uncompensated Baro-VNAV systems, procedure NA below -6°C or above 54°C.	

ATIS 127.75	SEATTLE APP CON 125.9 306.9	BOEING TOWER 120.6 257.8	GND CON 121.9	CLNC DEL 132.4
----------------	--------------------------------	-----------------------------	------------------	-------------------



FEVAS 1700	3000 tr 295°	GGRAM tr 314°	LOFAL	AUBRN
VGSI and RNAV glidepath not coincident (VGSI Angle 3.10/TCH 66).				
RW32L 1800 310° 3600 315° 1800				
5.3 NM 5.9 NM				
CATEGORY	A	B	C	D
RNP 0.10 DA	567-1½ 545 (600-1%)			
RNP 0.15 DA	681-1½ 659 (700-1%)			
RNP 0.30 DA	836-2½ 814 (900-2½)			
GP 3.10° TCH 49				
AUTHORIZATION REQUIRED				

SEATTLE, WASHINGTON
Orig 10AUG23

47°32'N-122°18'W

BOEING FLD/KING COUNTY INTL (BFI)
RNAV (RNP) Z RWY 32L

NW-1, 07 AUG 2025 to 04 SEP 2025

NW-1, 07 AUG 2025 to 04 SEP 2025