

SCOTTSBLUFF, NEBRASKA

AL-383 (FAA)

24249

VORTAC BFF	APP CRS	Rwy Idg	TDZE	Apt Elev
112.6	245°	8002	3967	3967
Chan 73				

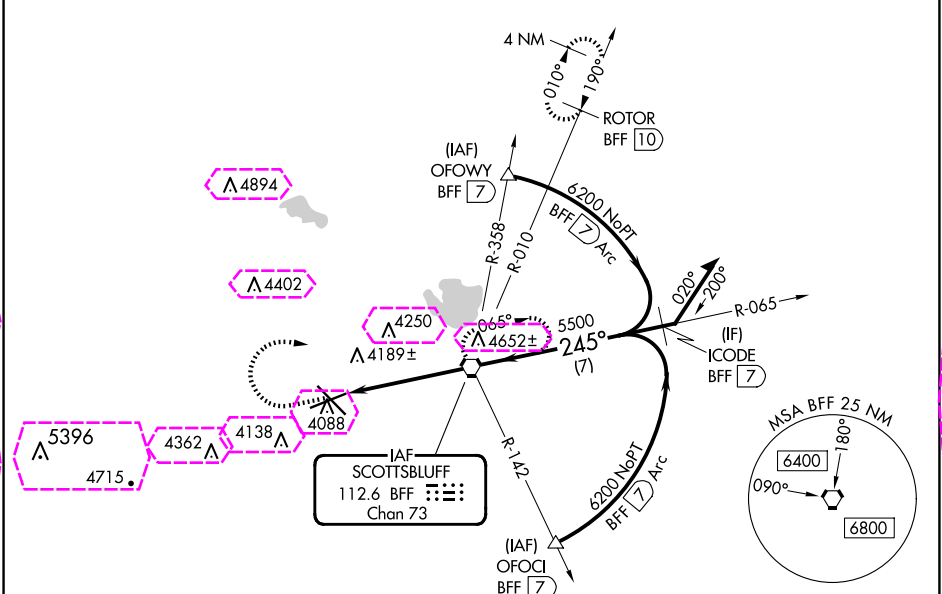
VOR or TACAN RWY 23

SCOTTSBLUFF/WESTERN NEBRASKA RGNL/WM B HEILIG FLD (BFTF)

⚠ When local altimeter setting not received, use Alliance altimeter setting: increase all MDAs 100 feet and visibility Cats C and D ½ SM. VDP NA when using Alliance altimeter setting. Visibility reduction by helicopters NA.

MISSED APPROACH: Climb to 5000 then climbing right turn to 6500 direct BFF VORTAC and hold (TACAN aircraft continue climb to 7300 via BFF R-010 to ROTOR 10 DME and hold north, right turn 190° inbound).

ASOS 121.025	DENVER CENTER 127.95 338.2	UNICOM 123.0 (CTAF) 0
-----------------	-------------------------------	--------------------------



5000
6500
BFF

Λ 5038

BFF

3.1

↓

1.5 NM
3.1 NM

BFF VORTAC

Remain within 10 NM

065°

245°

6200
5500

CATEGORY	A	B	C	D
S-23	4500-1	533 (600-1)	4500-1½ 533 (600-1½)	4500-1¾ 533 (600-1¾)
C CIRCLING	4500-1	533 (600-1)	4560-1½ 593 (600-1½)	4740-2½ 773 (800-2½)

ELEV 3967

D

TDZE 3967

245°

065°

6200
5500

8002 X 150

8279 X 150

4006

HIRL Rwy 12-30

0

MIRL Rwy 5-23

0

FAF to MAP 4.7 NM

	60	90	120	150	180
Knots	60	90	120	150	180
Min:Sec	4:42	3:08	2:21	1:53	1:34

VOR or TACAN RWY 23