

SCOTTSLUFF, NEBRASKA

AL-383 (FAA)

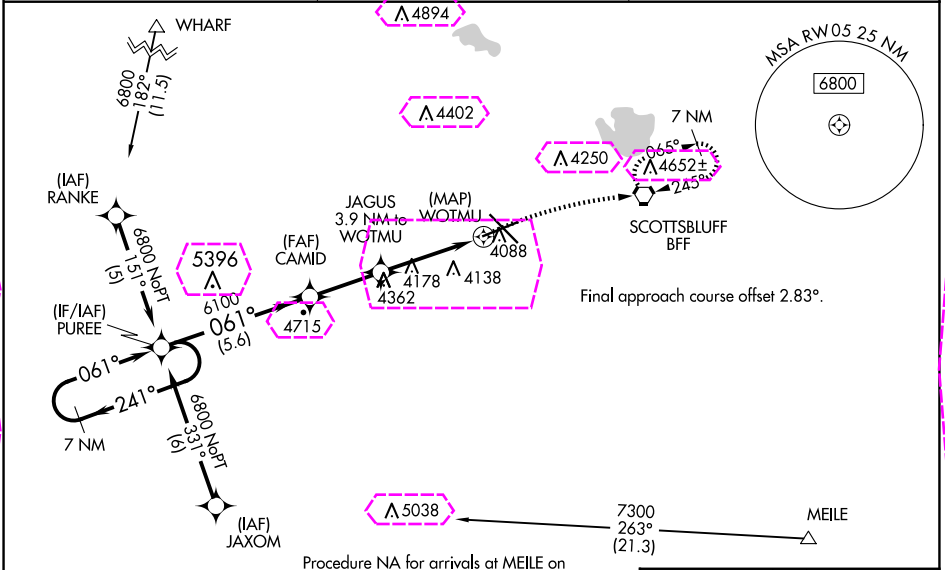
24249

WAAS CH <b>93506</b> <b>W05A</b>	APP CRS <b>061°</b>	Rwy Idg <b>8002</b> TDZE <b>3952</b> Apt Elev <b>3967</b>
--	------------------------	---

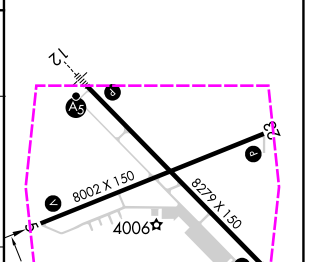
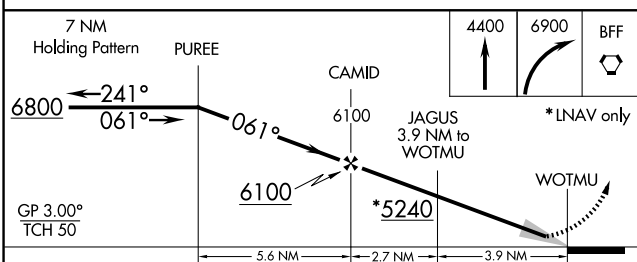
RNAV (GPS) RWY 5  
SCOTTSLUFF/WESTERN NEBRASKA RGNL/WM B HEILIG FLD (BFF)

RNP APCH.	MISSED APPROACH: Climb to 4400 then climbing right turn to 6900 direct BFF VORTAC and hold, continue climb-in-hold to 6900.
-----------	--

ASOS <b>121.025</b>	DENVER CENTER <b>127.95 338.2</b>	UNICOM <b>123.0 (CTAF) 0</b>
------------------------	--------------------------------------	---------------------------------



ELEV 3967	TDZE 3952
-----------	-----------



CATEGORY	A	B	C	D
LPV DA		4202-1	250 (300-1)	
RNAV/ VNAV DA		4418-1½	466 (500-1½)	
RNAV MDA	4480-1	528 (600-1)	4480-1½	528 (600-1½)
CIRCLING	4500-1	533 (600-1)	4560-1½ 593 (600-1½)	4720-2½ 753 (800-2½)

HIRL Rwy 12-30 0
MIRL Rwy 5-23 0

SCOTTSLUFF, NEBRASKA  
Amdt 1B 21JUN18

SCOTTSLUFF/WESTERN NEBRASKA RGNL/WM B HEILIG FLD (BFF)  
41°52'N-103°36' W

RNAV (GPS) RWY 5

SCOTTSBLUFF, NEBRASKA

AL-383 (FAA)

25219

WAAS CH <b>93506</b> <b>W05A</b>	APP CRS <b>061°</b>	Rwy Ldg TDZE <b>3952</b> Apt Elev <b>3967</b>
--	------------------------	---

RNAV (GPS) RWY 5

SCOTTSBLUFF/WESTERN NEBRASKA RGNL/WM B HEILIG FLD (BFF)

RNP APCH.

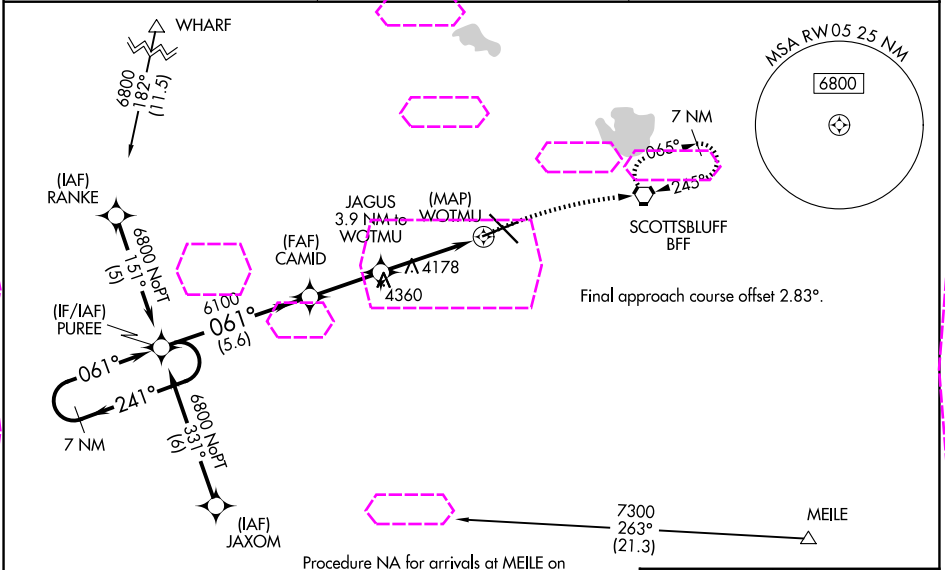
▼

▲

Baro-VNAV NA when using Alliance altimeter setting. For uncompensated Baro-VNAV systems, LNAV/VNAV NA below -22°C (-7°F) or above 51°C (124°F). When local altimeter setting not received, use Alliance altimeter setting and increase all DA 91 feet and all MDA 100 feet; increase LPV all Cats visibility 3/8 mile, LNAV/VNAV all Cats visibility 1/4 mile, LNAV Cats C/D visibility 1/4 mile, Circling Cat C visibility 1/2 mile and Cat D visibility 1/4 mile.

MISSED APPROACH:  
Climb to 4400 then climbing right turn to 6900 direct BFF VORTAC and hold, continue climb-in-hold to 6900.

ASOS <b>121.025</b>	DENVER CENTER <b>127.95 338.2</b>	UNICOM <b>123.0 (CTAF) 0</b>
------------------------	--------------------------------------	---------------------------------



Procedure NA for arrivals at MEILE on V169 southeast bound and arrivals at WHARF on V89 northeast bound.

7 NM Holding Pattern PUREE		4400	6900	BFF
GP 3.00° TCH 50		*NAV only		
6800 ← 241° 061° →		CAMD 6100	JAGUS 3.9 NM to WOTMU	WOTMU
5.6 NM		2.7 NM	3.9 NM	
CATEGORY	A	B	C	D
LPV DA	4202-1		250 (300-1)	
LNAV/VNAV DA	4418-1½		466 (500-1½)	
LNAV MDA	4480-1	528 (600-1)	4480-1½	528 (600-1½)
CIRCLING	4500-1	533 (600-1)	4560-1½ 593 (600-1½)	4720-2½ 753 (800-2½)

ELEV 3967 D TDZE 3952

AS 8002 X 1.50

ME 8229 X 1.50

HIRL Rwy 12-30 0  
MIRL Rwy 5-23 0