

SCOTTSBLUFF, NEBRASKA

AL-383 (FAA)

24249

WAAS CH 53306 W30A	APP CRS 306°	Rwy Idg TDZE 3952 Apt Elev 3967	8279 3952 3967
--	------------------------	---	---

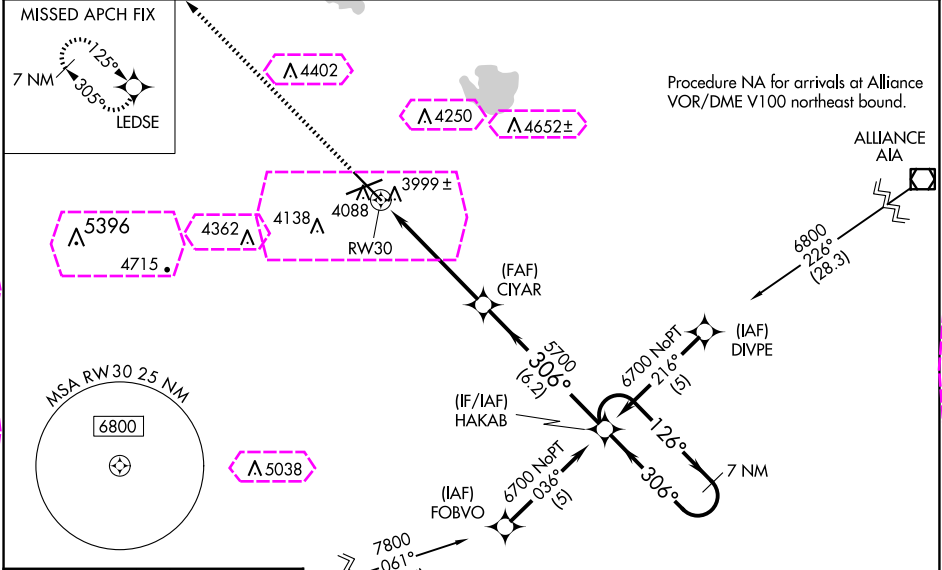
RNAV (GPS) RWY 30
SCOTTSBLUFF/WESTERN NEBRASKA RGNL/WM B HEILIG FLD (BTF)

When local altimeter setting not received, use Alliance altimeter setting: increase LPV DA to 4293 feet and visibility $\frac{1}{4}$ SM; increase LNAV/VNAV DA to 4392 feet and visibility $\frac{1}{4}$ SM; increase all MDAs 100 feet and visibility Cats C and D $\frac{1}{2}$ SM. For inoperative MALSR, when using alliance altimeter setting, increase LPV all Cats visibility to $1\frac{1}{4}$. For uncompensated Baro-VNAV systems, LNAV/VNAV NA below -22°C (-7°F) or above 41°C (105°F). Baro-VNAV NA when using Alliance altimeter setting. VDP NA when using Alliance altimeter setting. DME/DME RNP-0.3 NA.

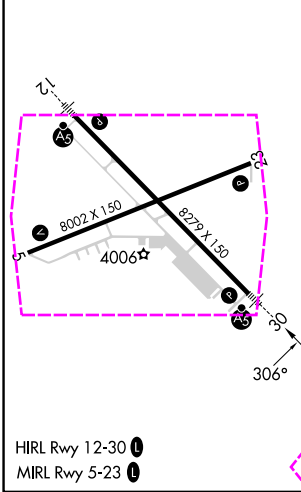
MALSR

MISSED APPROACH: Climb to 6900 direct LEDSE and hold.

ASOS 121.025	DENVER CENTER 127.95 338.2	UNICOM 123.0 (CTAF) 1
------------------------	--------------------------------------	---------------------------------



ELEV 3967	D	TDZE 3952
-----------	---	-----------



ALBIN

Procedure NA for arrivals at ALBIN V81 southwest bound and V6 westbound.

6900

LEDSE

HAKAB

7 NM Holding Pattern

CIYAR

126°

306°

6700

RW30

1.2 NM

4.1 NM

6.2 NM

GP 3.00°

TCH 53

* LNAV only

* 1.2 NM to RW30

306°

5700

CATEGORY	A	B	C	D
LPV DA	4202-½ 250 (300-½)			
LNAV/VNAV DA	4301-¾ 349 (400-¾)			
LNAV MDA	4380-½ 428 (500-½)	4380-¾ 428 (500-¾)	4380-1 428 (500-1)	
CIRCLING	4500-1 533 (600-1)	4560-1½ 593 (600-1½)	4740-2½ 773 (800-2½)	

SCOTTSBLUFF, NEBRASKA
Amdt 1B 30JAN20

SCOTTSBLUFF/WESTERN NEBRASKA RGNL/WM B HEILIG FLD (BTF)
41°52'N-103°36'W
RNAV (GPS) RWY 30

NC-2, 10 JUL 2025 to 07 AUG 2025

NC-2, 10 JUL 2025 to 07 AUG 2025


SCOTTSLUFF, NEBRASKA

AL-383 (FAA)

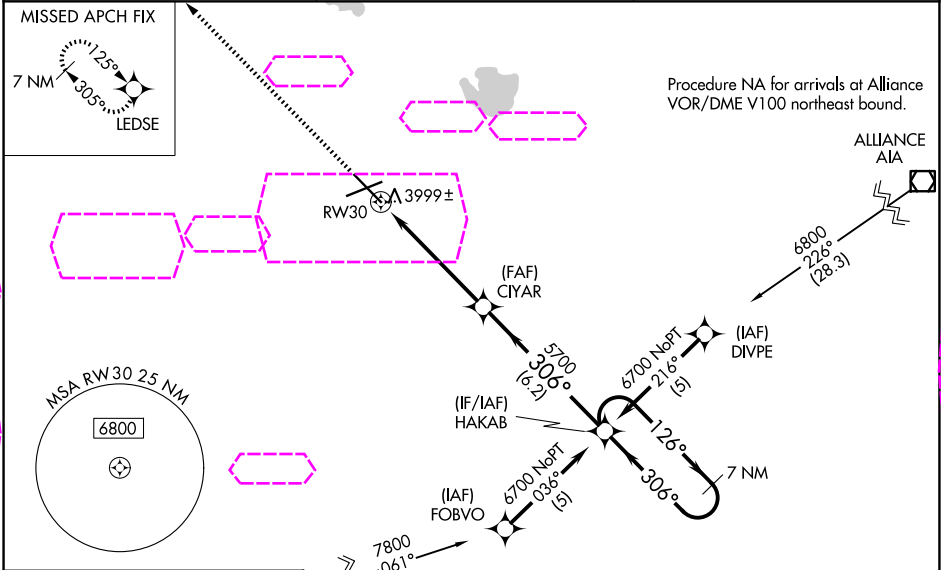
25219

WAAS CH 53306 W30A	APP CRS 306°	Rwy Ldg 8279 TDZE 3952 Apt Elev 3967
--	------------------------	---

RNAV (GPS) RWY 30
SCOTTSLUFF/WESTERN NEBRASKA RGNL/WM B HEILIG FLD (BFTF)

<p>⚠ When local altimeter setting not received, use Alliance altimeter setting: increase LPV DA to 4293 feet and visibility $\frac{1}{4}$ SM; increase LNAV/VNAV DA to 4392 feet and visibility $\frac{1}{4}$ SM; increase all MDAs 100 feet and visibility Cats C and D $\frac{1}{2}$ SM. For inoperative MALSR, when using alliance altimeter setting, increase LPV all Cats visibility to $1\frac{1}{4}$. For uncompensated Baro-VNAV systems, LNAV/VNAV NA below -22°C (-7°F) or above 41°C (105°F). Baro-VNAV NA when using Alliance altimeter setting. VDP NA when using Alliance altimeter setting. DME/DME RNP-0.3 NA.</p>	<p>MALSR</p> 	<p>MISSED APPROACH: Climb to 6900 direct LEDSE and hold.</p>
--	--	--

ASOS 121.025	DENVER CENTER 127.95 338.2	UNICOM 123.0 (CTAF) 1
------------------------	--------------------------------------	---------------------------------



ELEV 3967	D	TDZE 3952
-----------	----------	-----------

HIRL Rwy 12-30 **L**
MIRL Rwy 5-23 **L**

ALBIN

Procedure NA for arrivals at ALBIN V81 southwest bound and V6 westbound.

6900

LEDSE

*LNAV only

*1.2 NM to RW30

RW30

CIYAR

HAKAB

7 NM Holding Pattern

126° → 6700

← 306°

GP 3.00° TCH 53

1.2 NM

4.1 NM

6.2 NM

CATEGORY	A	B	C	D
LPV DA	4202-½ 250 (300-½)			
LNAV/VNAV DA	4301-¾ 349 (400-¾)			
LNAV MDA	4380-½ 428 (500-½)	4380-¾ 428 (500-¾)	4380-1 428 (500-1)	4380-1 428 (500-1)
CIRCLING	4500-1 533 (600-1)	4560-1½ 593 (600-1½)	4740-2½ 773 (800-2½)	4740-2½ 773 (800-2½)

SCOTTSLUFF, NEBRASKA
Amdt 1B 30JAN20

SCOTTSLUFF/WESTERN NEBRASKA RGNL/WM B HEILIG FLD (BFTF)
41°52'N-103°36'W
RNAV (GPS) RWY 30

NC-2, 07 AUG 2025 to 04 SEP 2025

NC-2, 07 AUG 2025 to 04 SEP 2025