

SCOTTSBLUFF, NEBRASKA

AL-383 (FAA)

24249

WAAS CH 73005 W12A	APP CRS 126°	Rwy Idg 8279 TDZE 3963 Apt Elev 3967
--	------------------------	---

RNAV (GPS) RWY 12

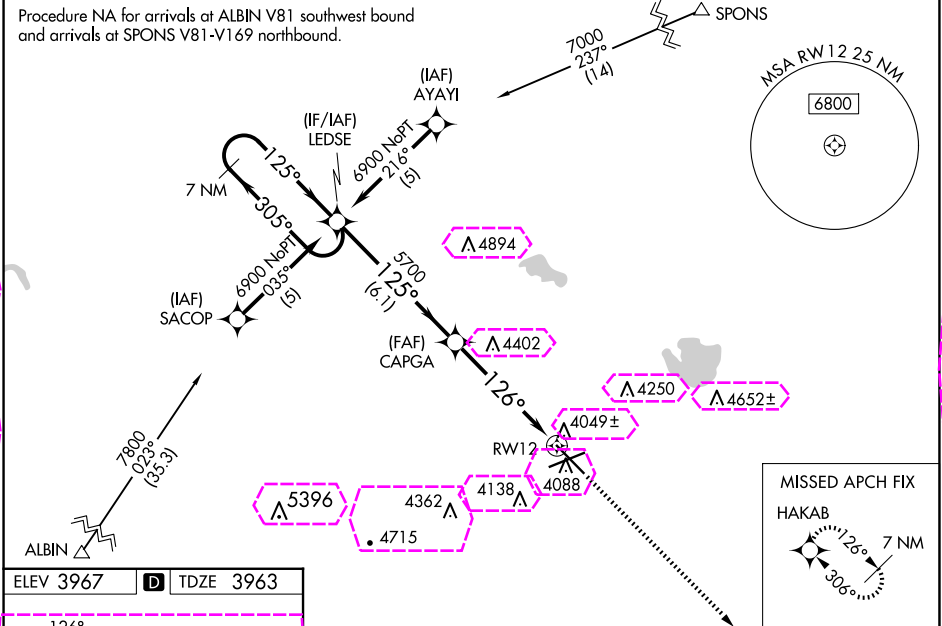
SCOTTSBLUFF/WESTERN NEBRASKA RGNL/WM B HEILIG FLD (BTF)

⚠ When local altimeter setting not received, use Alliance altimeter setting and increase all DAs 91 feet and all MDAs 100 feet; increase LPV, LNAV/VNAV, LNAV Cat A/B and Circling Cat B visibilities ¼ mile; increase LNAV and Circling Cat C/D visibilities ½ mile. For inoperative MALSR, when using Alliance altimeter setting, increase LPV all Cats visibility to 1¼, and LNAV Cat A visibility to 1. For uncompensated Baro-VNAV systems, LNAV/VNAV NA below -22°C (-7°F) or above 41°C (105°F). Baro-VNAV NA when using Alliance altimeter setting. VDP NA when using Alliance altimeter setting. DME/DME RNP-0.3 NA.

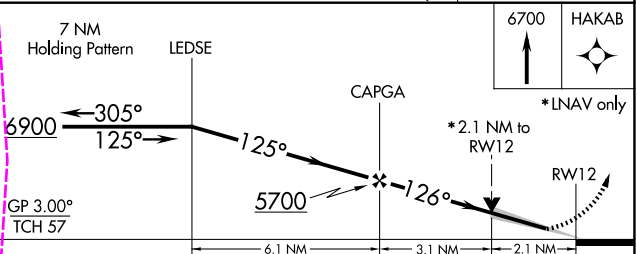
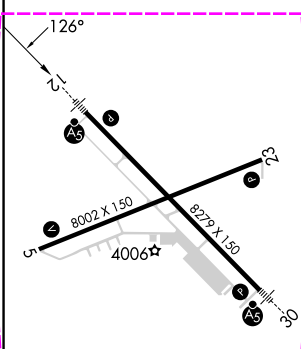
MALSR

MISSED APPROACH:
Climb to 6700 direct
HAKAB and hold.

ASOS 121.025	DENVER CENTER 127.95 338.2	UNICOM 123.0 (CTAF) 1
------------------------	--------------------------------------	---------------------------------



ELEV 3967	D	TDZE 3963
-----------	---	-----------



CATEGORY	A	B	C	D
LPV DA	4213-½ 250 (300-½)			
LNAV/VNAV DA	4340-¾ 377 (400-¾)			
LNAV MDA	4700-½ 737 (800-½)		4700-1½ 737 (800-1½)	4700-1¾ 737 (800-1¾)
CIRCLING	4700-1 733 (800-1)		4700-2 733 (800-2)	4740-2½ 773 (800-2½)

SCOTTSBLUFF, NEBRASKA
Amdt 1A 30JAN20

SCOTTSBLUFF/WESTERN NEBRASKA RGNL/WM B HEILIG FLD (BTF)
41°52'N-103°36' W

RNAV (GPS) RWY 12

SCOTTSBLUFF, NEBRASKA

AL-383 (FAA)

25219

WAAS CH 73005 W12A	APP CRS 126°	Rwy Ldg 8279 TDZE 3963 Apt Elev 3967
--	------------------------	---

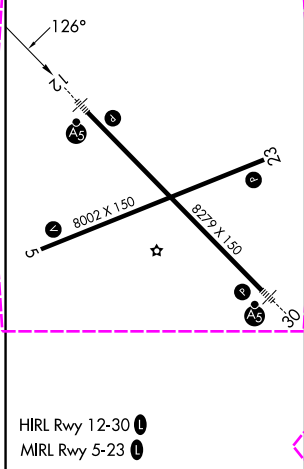
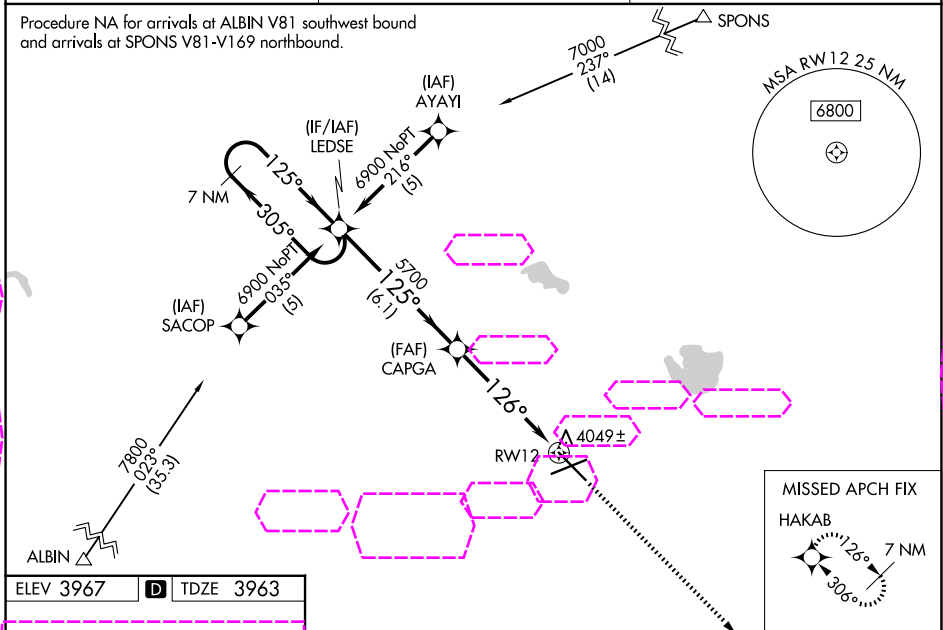
RNAV (GPS) RWY 12
SCOTTSBLUFF/WESTERN NEBRASKA RGNL/WM B HEILIG FLD (BTF)

⚠ When local altimeter setting not received, use Alliance altimeter setting and increase all DAs 91 feet and all MDAs 100 feet; increase LPV, LNAV/VNAV, LNAV Cat A/B and Circling Cat B visibilities ¼ mile; increase LNAV and Circling Cat C/D visibilities ½ mile. For inoperative MALSR, when using Alliance altimeter setting, increase LPV all Cats visibility to 1¼, and LNAV Cat A visibility to 1. For uncompensated Baro-VNAV systems, LNAV/VNAV NA below -22°C (-7°F) or above 41°C (105°F). Baro-VNAV NA when using Alliance altimeter setting. VDP NA when using Alliance altimeter setting. DME/DME RNP-0.3 NA.

MALSR

MISSED APPROACH:
Climb to 6700 direct HAKAB and hold.

ASOS 121.025	DENVER CENTER 127.95 338.2	UNICOM 123.0 (CTAF) 1
------------------------	--------------------------------------	---------------------------------



7 NM Holding Pattern		LEDSE		CAPGA		6700 ↑		HAKAB ✦	
6900		←305° 125°→		125°		*2.1 NM to RW12		*LNAV only	
GP 3.00° TCH 57				5700		126°		RW12	
		6.1 NM		3.1 NM		2.1 NM			
CATEGORY	A	B	C	D					
LPV DA	4213-½ 250 (300-½)								
LNAV/VNAV DA	4340-¾ 377 (400-¾)								
LNAV MDA	4700-½ 737 (800-½)			4700-1½ 737 (800-1½)			4700-1¾ 737 (800-1¾)		
CIRCLING	4700-1 733 (800-1)			4700-2 733 (800-2)			4740-2½ 773 (800-2½)		

SCOTTSBLUFF, NEBRASKA
Amdt 1A 30JAN20

SCOTTSBLUFF/WESTERN NEBRASKA RGNL/WM B HEILIG FLD (BTF)
41°52'N-103°36' W

RNAV (GPS) RWY 12