

SCOTTSBLUFF, NEBRASKA

AL-383 (FAA)

24249

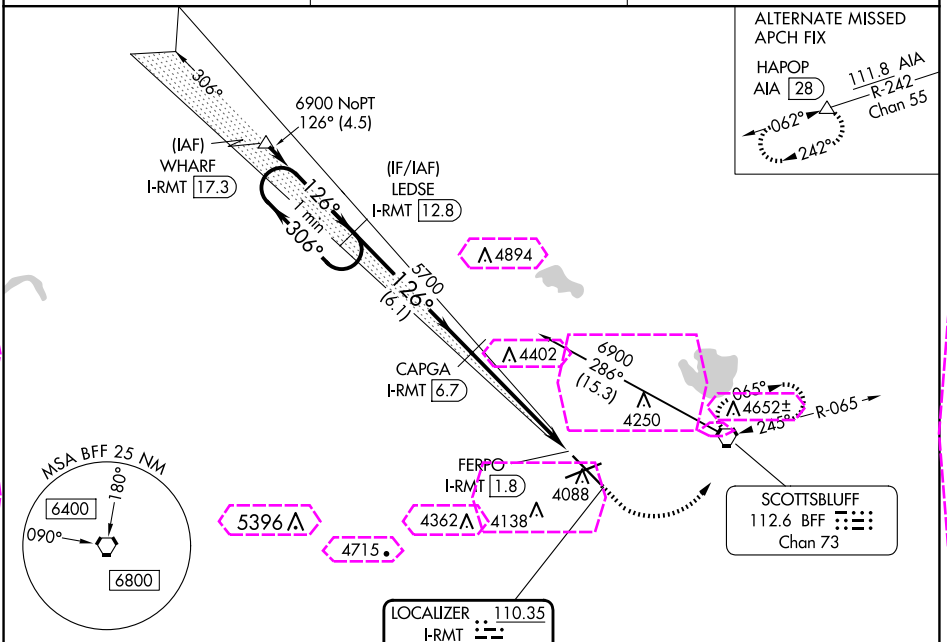
LOC/DME I-RMT 110.35 Chan 40 (Y)	APP CRS 126°	Rwy Idg 8279 TDZE 3963 Apt Elev 3967
--	------------------------	---

ILS or LOC/DME RWY 12
SCOTTSBLUFF/WESTERN NEBRASKA RGNL/WM B HEILIG FLD (BFF)

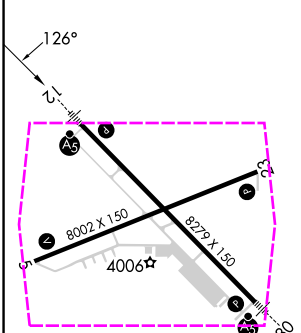
When local alimeter setting not received, use Alliance alimeter setting and increase DA 91 feet; all MDAs 100 feet, and S-LOC 12 and Circling Cat B/C/D visibilities ¼ mile. For inoperative MALSR, when using Alliance alimeter setting, increase S-ILS 12 visibility to 1. VDP NA when using Alliance alimeter setting.

MALSR
MISSED APPROACH: Climb to 4500 then climbing left turn to 6900 direct BFF VORTAC and hold, continue climb-in-hold to 6900.

ASOS 121.025	DENVER CENTER 127.95 338.2	UNICOM 123.0 (CTAF) 0
------------------------	--------------------------------------	--



ELEV 3967	D	TDZE 3963
-----------	---	-----------



DME REQUIRED

ILS unusable from FERPO/1.8 DME inbound.				
One Minute Holding Pattern		LEDSE I-RMT 12.8	CAPGA I-RMT 6.7	4500 6900 BFF
6900 ← 306° 126° →		5700	I-RMT 3.5	FERPO I-RMT 1.8
GS 3.00° TCH 57		6.1 NM	3.2 NM	1.7 NM 0.3
CATEGORY	A	B	C	D
S-ILS 12	4163-½ 200 (200-½)			
S-LOC 12	4640-½ 677 (700-½)	4640-1½ 677 (700-1½)	4640-2 677 (700-1¾)	4640-2½ 677 (700-1¾)
CIRCLING	4640-1 673 (700-1)	4640-2 673 (700-2)	4740-2½ 773 (800-2½)	4740-2½ 773 (800-2½)

SCOTTSBLUFF, NEBRASKA
Orig-B 30JAN20

SCOTTSBLUFF/WESTERN NEBRASKA RGNL/WM B HEILIG FLD (BFF)
41°52'N-103°36'W
ILS or LOC/DME RWY 12

NC-2, 10 JUL 2025 to 07 AUG 2025

NC-2, 10 JUL 2025 to 07 AUG 2025

SCOTTSBLUFF, NEBRASKA

AL-383 (FAA)

25219

LOC/DME I-RMT 110.35 Chan 40 (Y)	APP CRS 126°	Rwy Ldg 8279 TDZE 3963 Apt Elev 3967
--	------------------------	--

ILS or LOC/DME RWY 12

SCOTTSBLUFF/WESTERN NEBRASKA RGNL/WM B HEILIG FLD (BFF)

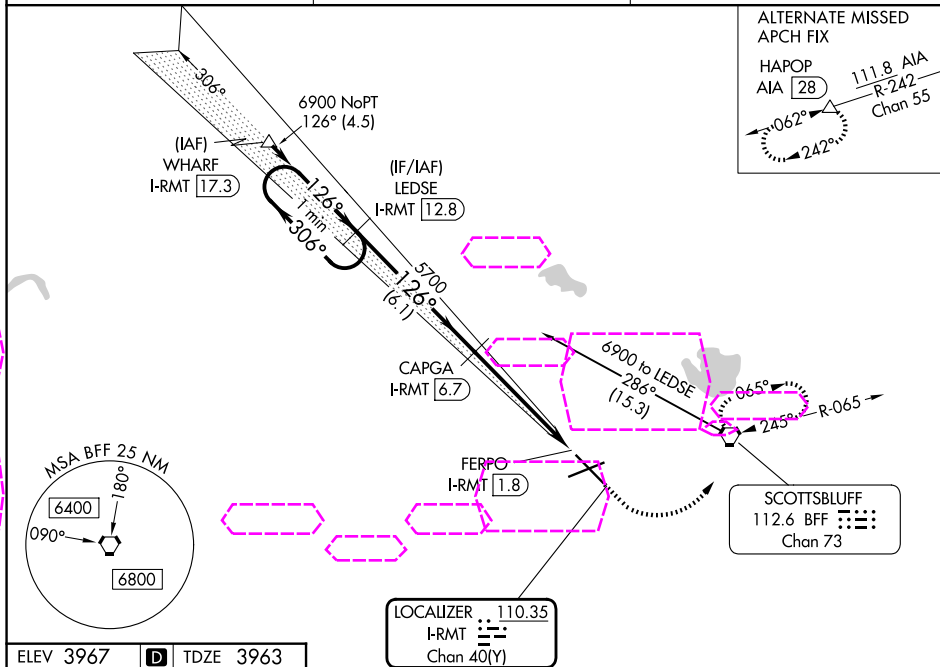
⚠ When local altimeter setting not received, use Alliance altimeter setting and increase DA 91 feet; all MDAs 100 feet, and S-LOC 12 and Circling Cat B/C/D visibilities ¼ mile. For inoperative MALSR, when using Alliance altimeter setting, increase S-ILS 12 visibility to 1. VDP NA when using Alliance altimeter setting.

MALSR

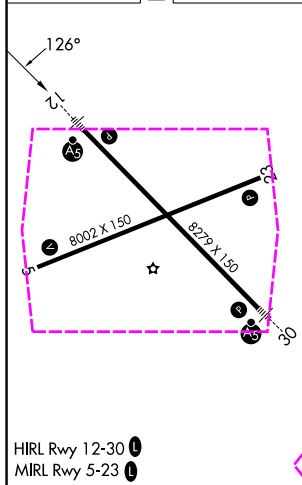


MISSED APPROACH: Climb to 4500 then climbing left turn to 6900 direct BFF VORTAC and hold, continue climb-in-hold to 6900.

ASOS 121.025	DENVER CENTER 127.95 338.2	UNICOM 123.0 (CTAF) 0
------------------------	--------------------------------------	--



ELEV 3967 **D** TDZE 3963



HIRL Rwy 12-30 **0**
MIRL Rwy 5-23 **0**

DME REQUIRED

ILS unusable from FERPO/1.8 DME inbound.				
One Minute Holding Pattern				
<div> <div>LEDSE I-RMT 12.8</div> <div>CAPGA I-RMT 6.7</div> <div>I-RMT 3.5</div> <div>FERPO I-RMT 1.8</div> </div>				
<div> <div>6900 ← 306°</div> <div>126° →</div> <div>5700</div> <div>5700</div> <div>6.1 NM</div> <div>3.2 NM</div> <div>1.7 NM</div> <div>0.3</div> </div>				
CATEGORY	A	B	C	D
S-ILS 12	4163-½ 200 (200-½)			
S-LOC 12	4640-½ 677 (700-½)	4640-1½ 677 (700-1½)	4640-1¾ 677 (700-1¾)	4640-2 677 (700-2)
CIRCLING	4640-1 673 (700-1)	4640-2 673 (700-2)	4740-2½ 773 (800-2½)	

SCOTTSBLUFF, NEBRASKA
Orig-B 30JAN20

SCOTTSBLUFF/WESTERN NEBRASKA RGNL/WM B HEILIG FLD (BFF)
41°52'N-103°36'W

ILS or LOC/DME RWY 12

NC-2, 07 AUG 2025 to 04 SEP 2025

NC-2, 07 AUG 2025 to 04 SEP 2025