

SCOTTSLUFF, NEBRASKA

AL-383 (FAA)

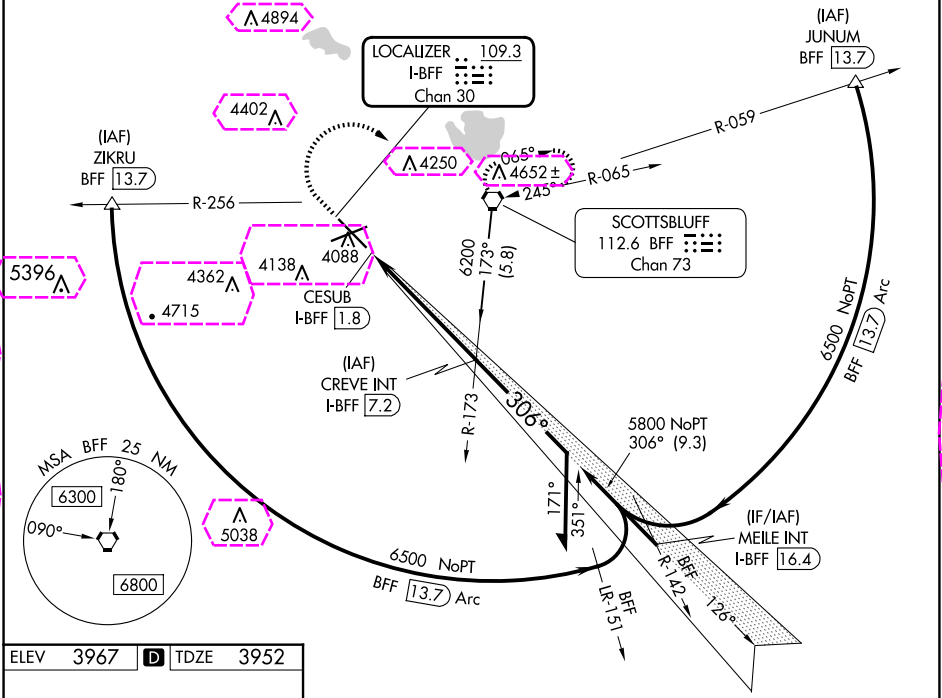
24249

LOC/DME I-BFF 109.3 Chan 30	APP CRS 306°	Rwy Idg 3279 TDZE 3952 Apt Elev 3967
---	------------------------	---

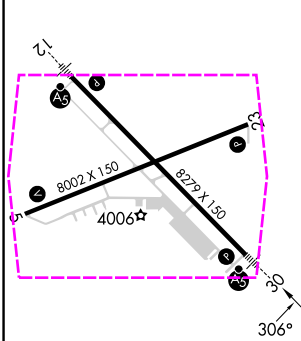
ILS or LOC RWY 30
SCOTTSLUFF/WESTERN NEBRASKA RGNL/WM B HEILIG FLD (B'F')

V A For inop ALS, increase S-LOC 30 Cats C and D visibility to 1 SM.	MALSR 	MISSED APPROACH: Climb to 5800 then climbing right turn to 6200 direct BFF VORTAC and hold.
---	-----------	---

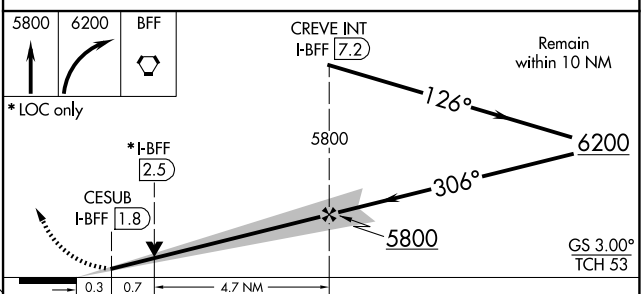
ASOS 121.025	DENVER CENTER 127.95 338.2	UNICOM 123.0 (CTAF) 0
------------------------	--------------------------------------	---------------------------------



ELEV 3967	D	TDZE 3952
------------------	----------	------------------



HIRL Rwy 12-30	MIRL Rwy 5-23
FAF to MAP 5.4 NM	
Knots	60 90 120 150 180
Min:Sec	5:24 3:36 2:42 2:10 1:48



CATEGORY	A	B	C	D
S-ILS 30	4152-½ 200 (200-½)			
S-LOC 30	4300-½ 348 (400-½)		4300-⅝ 348 (400-⅝)	
CIRCLING	4500-1 533 (600-1)		4560-1½ 593 (600-1½) 4740-2½ 773 (800-2½)	

SCOTTSLUFF, NEBRASKA
Amdt 11 08NOV18

SCOTTSLUFF/WESTERN NEBRASKA RGNL/WM B HEILIG FLD (B'F')
41°52'N-103°36'W
ILS or LOC RWY 30

NC-2, 10 JUL 2025 to 07 AUG 2025

NC-2, 10 JUL 2025 to 07 AUG 2025

SCOTTSBLUFF, NEBRASKA

AL-383 (FAA)

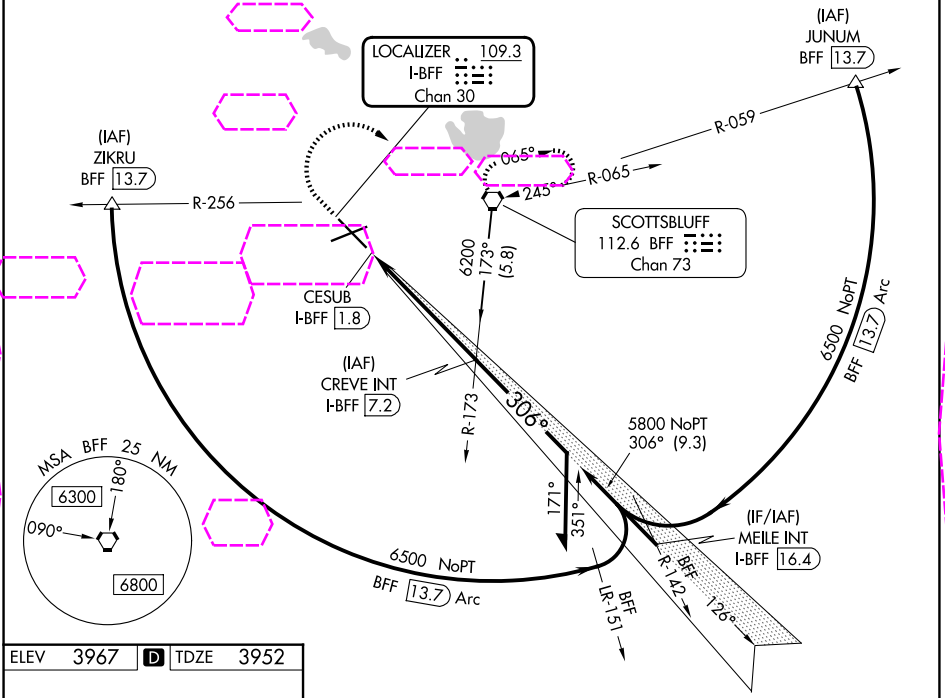
25219

LOC/DME I-BFF 109.3 Chan 30	APP CRS 306°	Rwy Ldg 8279 TDZE 3952 Apt Elev 3967
---	------------------------	---

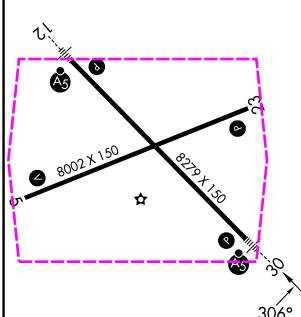
ILS or LOC RWY 30
SCOTTSBLUFF/WESTERN NEBRASKA RGNL/WM B HEILIG FLD (B'F'F)

⚠ For inop ALS, increase S-LOC 30 Cats C and D visibility to 1 SM.	MALSR 	MISSED APPROACH: Climb to 5800 then climbing right turn to 6200 direct BFF VORTAC and hold.
---	-----------	---

ASOS 121.025	DENVER CENTER 127.95 338.2	UNICOM 123.0 (CTAF) 0
------------------------	--------------------------------------	---------------------------------



ELEV 3967	D	TDZE 3952
------------------	----------	------------------



FAF to MAP 5.4 NM					
Knots	60	90	120	150	180
Min:Sec	5:24	3:36	2:42	2:10	1:48

5800	6200	BFF				
* LOC only						
* I-BFF 2.5						
CESUB I-BFF 1.8						
CREVE INT I-BFF 7.2						
5800						
6200						
306°						
126°						
Remain within 10 NM						
GS 3.00°						
TCH 53						
CATEGORY	A	B	C	D		
S-ILS 30	4152-½ 200 (200-½)					
S-LOC 30	4300-½ 348 (400-½)		4300-⅝ 348 (400-⅝)			
CIRCLING	4500-1 533 (600-1)		4560-1½ 593 (600-1½)	4740-2½ 773 (800-2½)		

SCOTTSBLUFF, NEBRASKA
Amdt 11 08NOV18

SCOTTSBLUFF/WESTERN NEBRASKA RGNL/WM B HEILIG FLD (B'F'F)
41°52'N-103°36'W

ILS or LOC RWY 30