

SAVANNAH, GEORGIA

AL-380 (FAA)

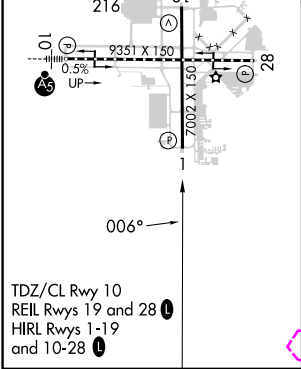
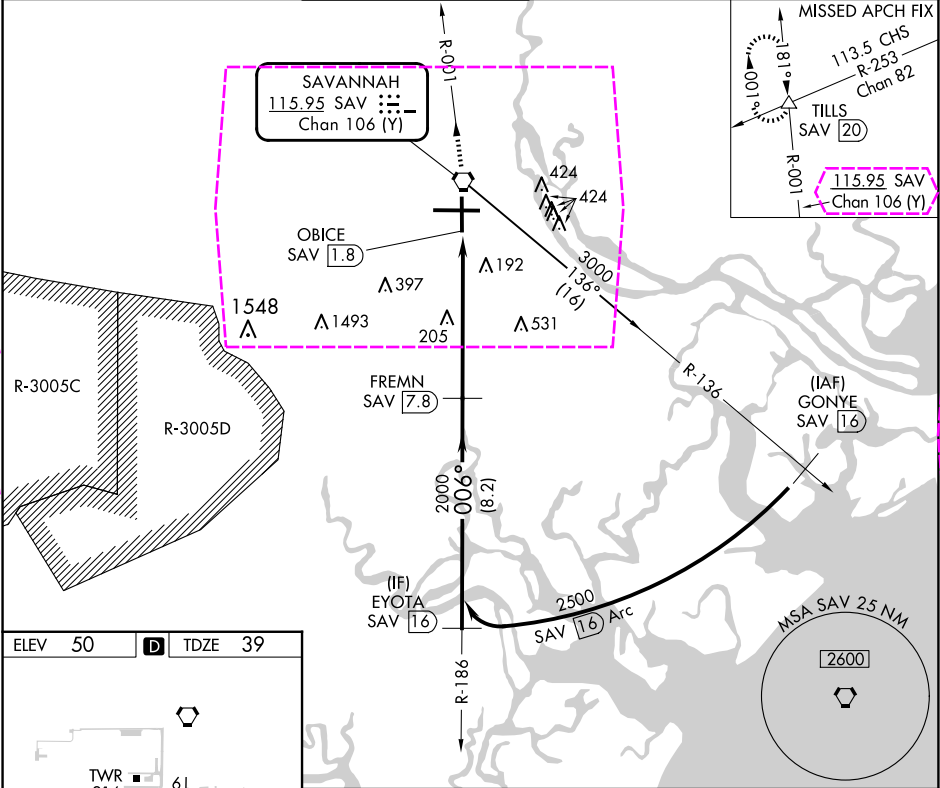
24081

VORTAC SAV	APP CRS	Rwy Idg	7002
115.95	006°	TDZE	39
Chan 106 (Y)		Apt Elev	50

VOR/DME or TACAN RWY 1

SAVANNAH/HILTON HEAD INTL (SAV)

<div><div>V</div><div>A</div></div>			MISSED APPROACH: Climb to 4000 direct SAV VORTAC and via SAV R-001 to TILLS INT/SAV 20 DME and hold.		
ATIS 123.75	SAVANNAH APP CON ★ 120.4 353.775	SAVANNAH TOWER ★ 125.975 (CTAF) 0 257.8	GND CON 121.9 348.6	CLNC DEL 119.55 291.775	UNICOM 122.95



4000	SAV ↑	SAV R-001 ⬡	TILLS △			
SAV VORTAC		OBICE SAV 1.8	SAV 3.1	FREMN SAV 7.8	EYOTA SAV 16	
		2.98° TCH 74		2000	2500	Procedure Turn NA
1.3 NM		4.7 NM		8.2 NM		
CATEGORY	A	B	C	D	E	
S-1	520/55	481 (500-1)	520-1 ³ / ₈ 481 (500-1 ³ / ₈)	520-1 ¹ / ₂ 481 (500-1 ¹ / ₂)	520-1 ³ / ₄ 481 (500-1 ³ / ₄)	
CIRCLING	520-1	470 (500-1)	740-2 690 (700-2)	740-2 ¹ / ₄ 690 (700-2 ¹ / ₄)	900-3 850 (900-3)	

SAVANNAH, GEORGIA

Orig-E 10SEP20

32°08'N-81°12'W

VOR/DME or TACAN RWY 1

SAVANNAH/HILTON HEAD INTL (SAV)
VOR/DME or TACAN RWY 1