

SAVANNAH, GEORGIA

AL-380 (FAA)

24081

VORTAC SAV	APP CRS	Rwy Idg	7002
115.95	181°	TDZE	47
Chan 106 (Y)		Apt Elev	50

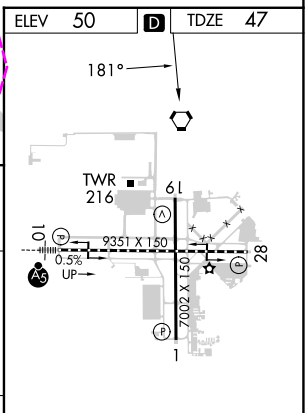
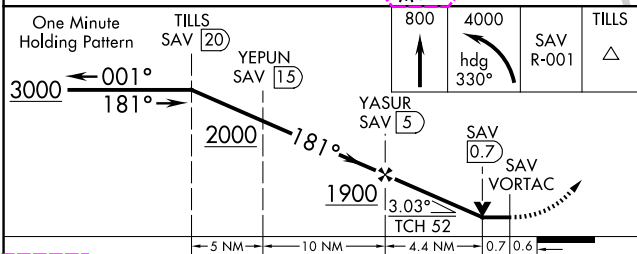
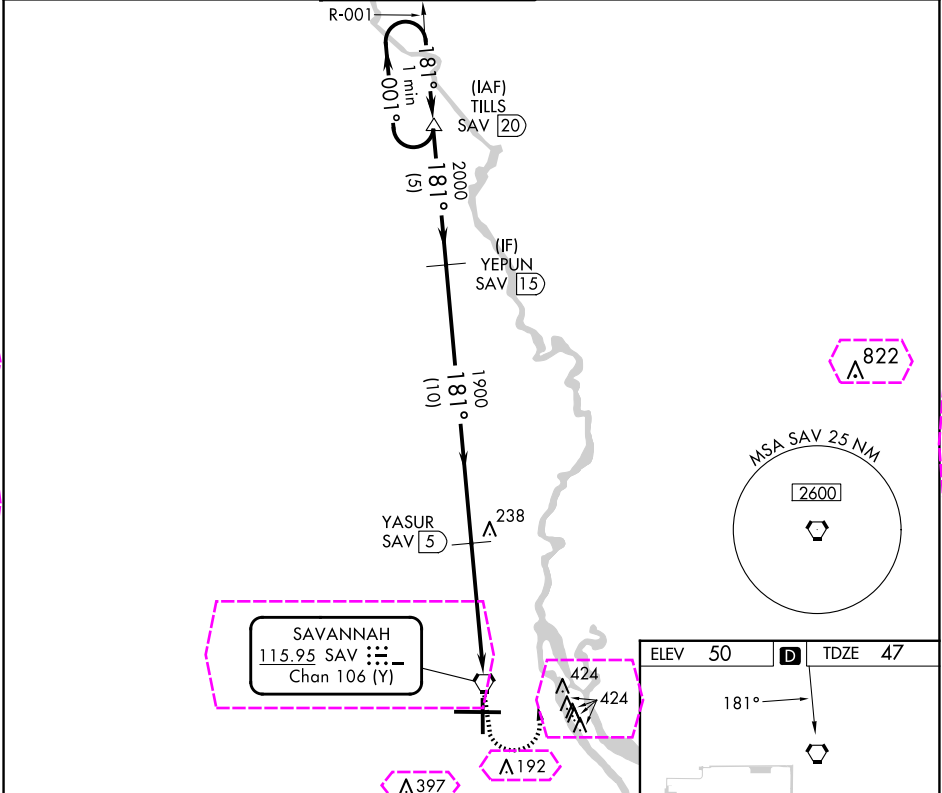
VOR/DME or TACAN RWY 19

SAVANNAH/HILTON HEAD INTL (SAV)

▼ Visibility reduction by helicopters NA. When local altimeter setting not received, use Hilton Head Island altimeter setting and increase all MDA 80 feet; increase S-19 Cats C/D visibility ¼ SM and Cat E visibility ½ SM; increase Circling Cats C/D visibility ¼ SM. VDP NA when using Hilton Head Island altimeter setting.

MISSED APPROACH: Climb to 800 then climbing left turn to 4000 via heading 330° and SAV R-001 to TILLS/20 DME and hold.

ATIS	SAVANNAH APP CON★	SAVANNAH TOWER★	GND CON	CLNC DEL	UNICOM
123.75	125.3 371.875	125.975 (CTAF) 257.8	121.9 348.6	119.55 291.775	122.95



CATEGORY	A	B	C	D	E
S-19	500-1	453 (500-1)	500-1¼ 453 (500-1¼)	500-1½	453 (500-1½)
CIRCLING	520-1	470 (500-1)	740-2 690 (700-2)	740-2¼ 690 (700-2¼)	900-3 850 (900-3)

SAVANNAH, GEORGIA
Orig-B 10SEP20

32°08'N-81°12'W

SAVANNAH/HILTON HEAD INTL (SAV)
VOR/DME or TACAN RWY 19

TDZ/CL Rwy 10
REIL Rws 19 and 28
HIRL Rws 1-19 and 10-28

SE-4, 10 JUL 2025 to 07 AUG 2025

SE-4, 10 JUL 2025 to 07 AUG 2025

SAVANNAH, GEORGIA

AL-380 (FAA)

25219

VORTAC SAV 115.95 Chan 106 (Y)	APP CRS 181°	Rwy Ldg TDZE 47 Apt Elev 50
--	------------------------	---

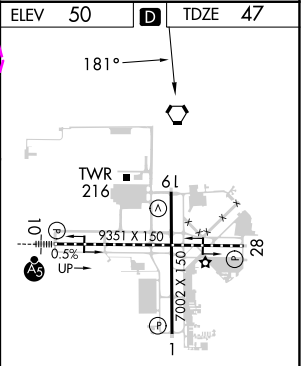
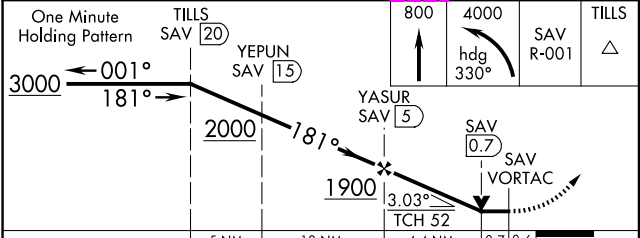
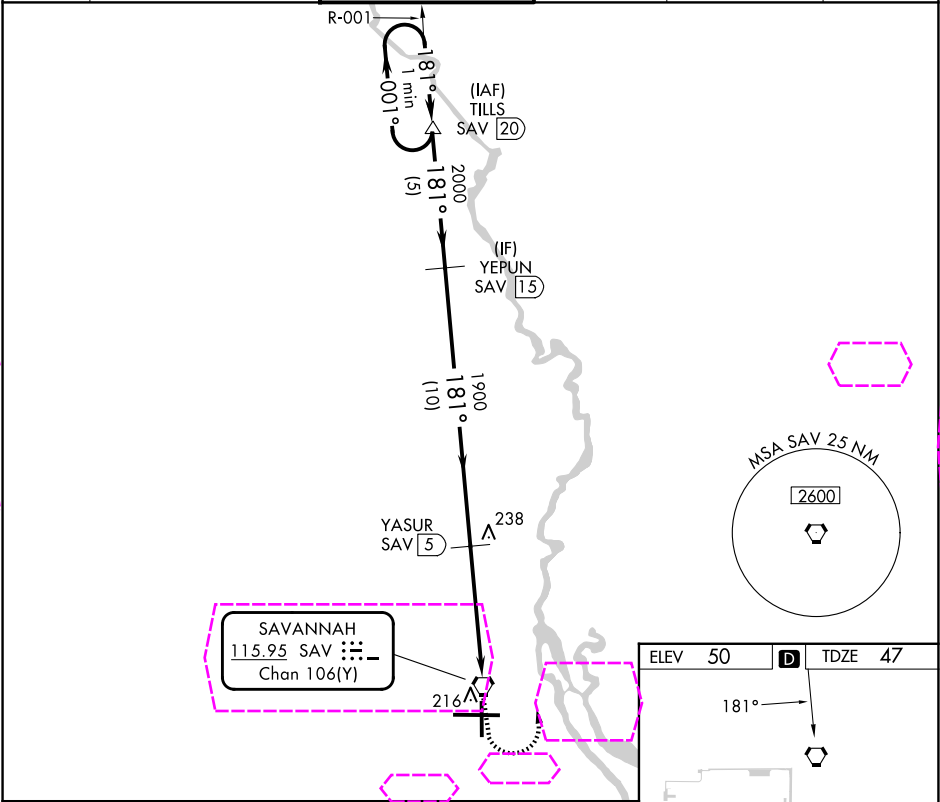
VOR/DME or TACAN RWY 19

SAVANNAH/HILTON HEAD INTL (SAV)

▼ Visibility reduction by helicopters NA. When local altimeter setting not received, use Hilton Head Island altimeter setting and increase all MDA 80 feet; increase S-19 Cats C/D visibility ¼ SM and Cat E visibility ½ SM; increase Circling Cats C/D visibility ¼ SM. VDP NA when using Hilton Head Island altimeter setting.

MISSED APPROACH: Climb to 800 then climbing left turn to 4000 via heading 330° and SAV R-001 to TILLS/20 DME and hold.

ATIS 123.75	SAVANNAH APP CON★ 125.3 371.875	SAVANNAH TOWER★ 125.975 (CTAF) 0 257.8	GND CON 121.9 348.6	CLNC DEL 119.55 291.775	UNICOM 122.95
-----------------------	---	---	-------------------------------	-----------------------------------	-------------------------



CATEGORY	A	B	C	D	E
S-19	500-1	453 (500-1)	500-1¼ 453 (500-1¼)	500-1½	453 (500-1½)
CIRCLING	520-1	470 (500-1)	740-2 690 (700-2)	740-2¼ 690 (700-2¼)	900-3 850 (900-3)

SAVANNAH, GEORGIA
Orig-B 10SEP20

32°08'N-81°12'W

VOR/DME or TACAN RWY 19

SE-4, 07 AUG 2025 to 04 SEP 2025

SE-4, 07 AUG 2025 to 04 SEP 2025

TDZ/CL Rwy 10
REIL Rws 19 and 28
HIRL Rws 1-19 and 10-28