

SAVANNAH, GEORGIA

AL-380 (FAA)

24081

VORTAC SAV	APP CRS	Rwy Idg	N/A
115.95	024°	TDZE	N/A
Chan 106 (Y)		Apt Elev	50

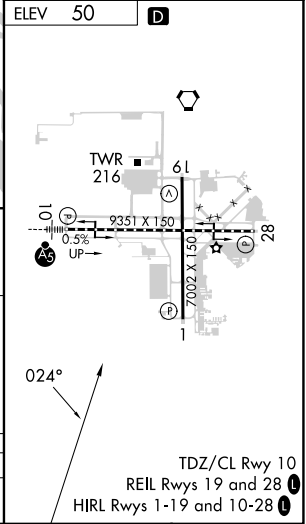
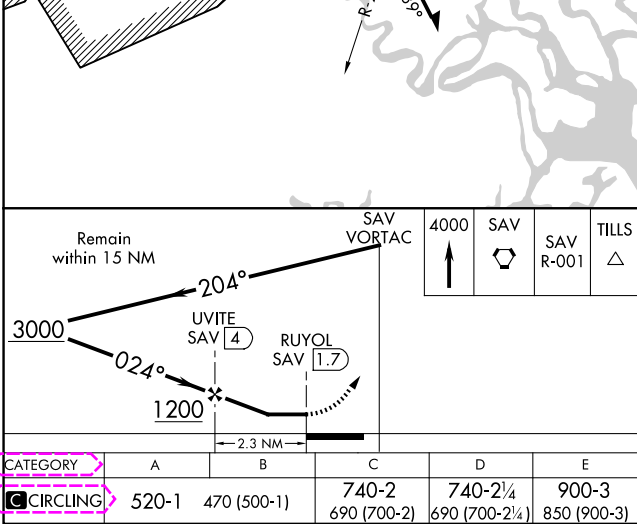
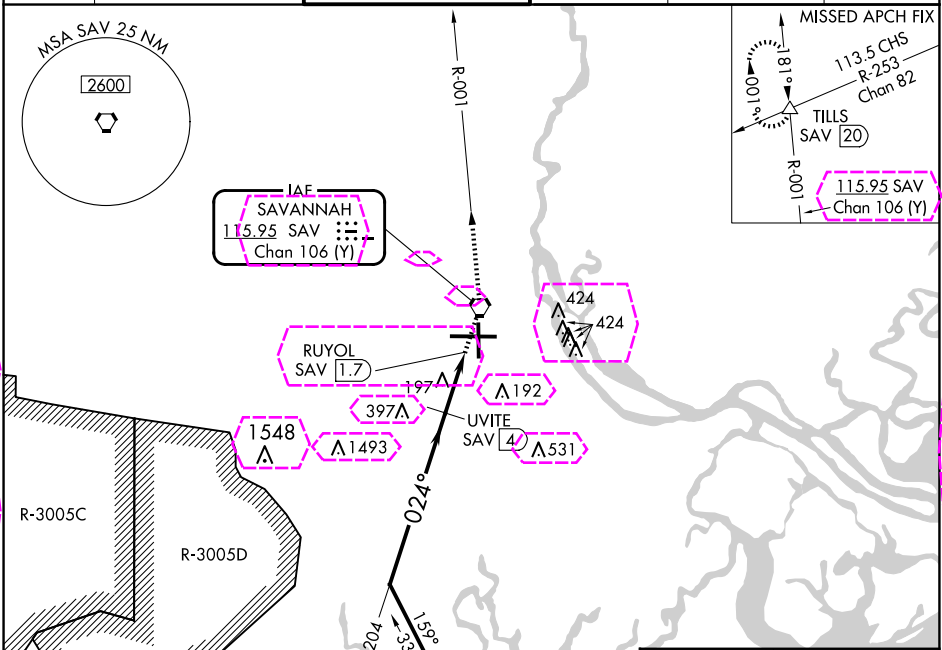
VOR/DME-A

SAVANNAH/HILTON HEAD INTL (SAV)

When local altimeter setting not received, use Hilton Head Island altimeter setting and increase all MDA 80 feet; increase Circling Cats C/D visibility ¼ SM.

MISSED APPROACH: Climb to 4000 direct SAV VORTAC and SAV R-001 to TILLS INT/SAV 20 DME and hold.

ATIS	SAVANNAH APP CON*	SAVANNAH TOWER*	GND CON	CLNC DEL	UNICOM
123.75	120.4 353.775	125.975 (CTAF) 257.8	121.9 348.6	119.55 291.775	122.95



SAVANNAH, GEORGIA	SAVANNAH/HILTON HEAD INTL (SAV)
Orig-B 10SEP20	VOR/DME-A
32°08'N-81°12'W	

SAVANNAH, GEORGIA

AL-380 (FAA)

25219

VORTAC SAV	APP CRS	Rwy Ldg	N/A
115.95	024°	TDZE	N/A
Chan 106 (Y)		Apt Elev	50

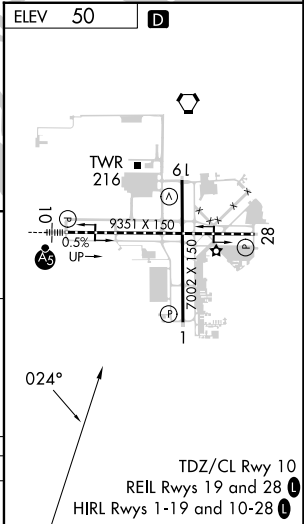
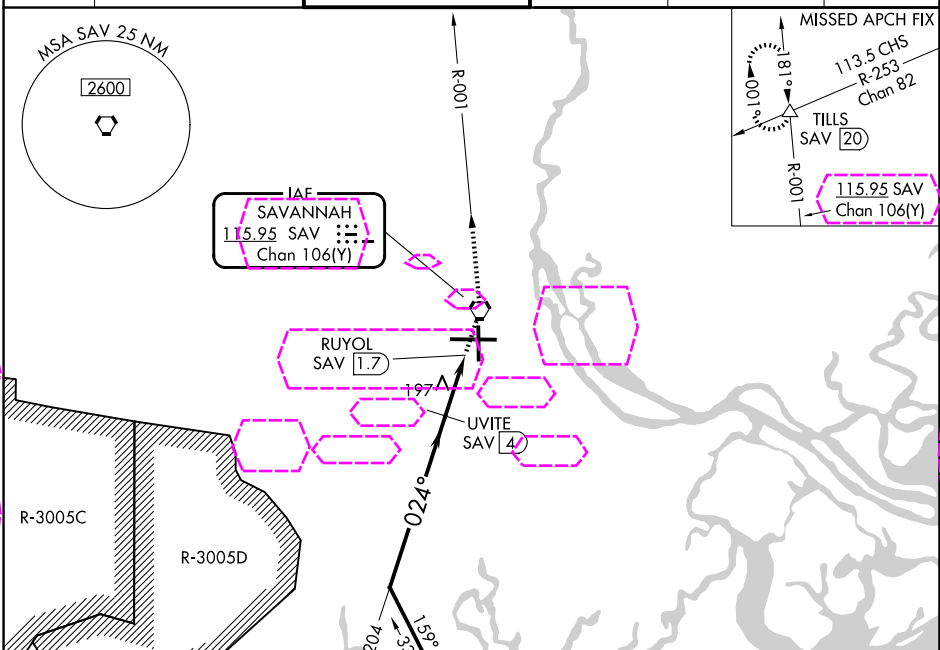
VOR/DME-A

SAVANNAH/HILTON HEAD INTL (SAV)

When local altimeter setting not received, use Hilton Head Island altimeter setting and increase all MDA 80 feet; increase Circling Cats C/D visibility ¼ SM.

MISSED APPROACH: Climb to 4000 direct SAV VORTAC and SAV R-001 to TILLS INT/SAV 20 DME and hold.

ATIS	SAVANNAH APP CON*	SAVANNAH TOWER*	GND CON	CLNC DEL	UNICOM
123.75	125.3 371.875	125.975 (CTAF) 0 257.8	121.9 348.6	119.55 291.775	122.95



Remain within 15 NM	3000	204°	SAV VORTAC	4000	SAV	SAV R-001	TILLS
		024°	UVITE SAV 4				
			RUYOL SAV 1.7				
			1200				
			2.3 NM				
CATEGORY	A	B	C	D	E		
CIRCLING	520-1	470 (500-1)	740-2 690 (700-2)	740-2¼ 690 (700-2¼)	900-3 850 (900-3)		

SAVANNAH, GEORGIA

Orig-B 10SEP20

SAVANNAH/HILTON HEAD INTL (SAV)

VOR/DME-A

32°08'N-81°12'W

SE-4, 07 AUG 2025 to 04 SEP 2025

SE-4, 07 AUG 2025 to 04 SEP 2025